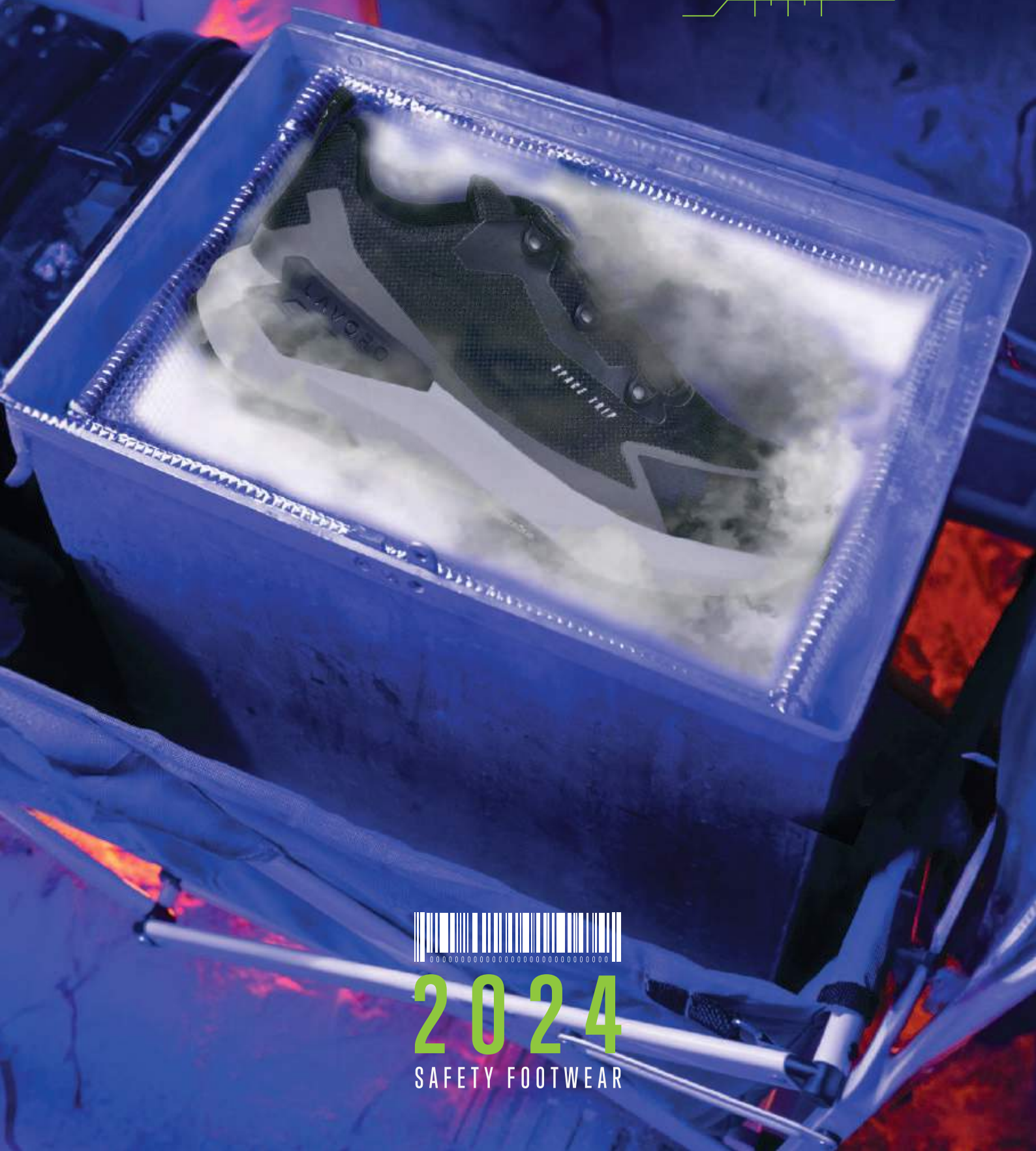


LAVORO

ENGINEERING LIFE



2024

SAFETY FOOTWEAR

WE BELIEVE IN LIFE

We breath Engineering.

We are certain that emotional feelings and rational insights brought together improve our daily activities.

For more than 35 years.

We care.

That's why we are experts in safety footwear engineering.

WALKING THE FUTURE

Our mission is to provide our clients a safer working journey every day, redefying new materials for ever more comfortable durable safety shoes, pushing workers beyond.

COLLECTIONS

01	SPACE TRIP	05
02	SPACE ODDITY	11
03	COUNTRYSIDE	17
04	T.T.	27
05	HIGHWAY	41
06	ENERGY	51
07	CUP	55
08	HEAVY DUTY	57
09	TECH	59
	FF/RF	63
10	WOMAN	69

INFORMATION

01	ACCESSORIES	76
02	SPODOS	77
03	TECHNICAL INFORMATION	78



WHAT WE CAN DO TOGETHER IS INSPIRING. IT'S REACHING.
IT'S VISIONARY.

[SPACE TRIP]

SUPERNOVA PROCESS

SUPER CRITICAL FLUID
NITROGEN FOAMING

KEY FEATURES

LIGHTWEIGHT

EXCELLENT REBOUND/
ENERGY RETURN

AGILITY AND COMFORT

PERFORMANCE

IMPROVED SHOCK
ABSORPTION

MAXIMIZE PERFORMANCE
AND EFFICIENCY

SUPERIOR ELASTICITY



SUSTAINABILITY

100% RECYCLABLE AND
REUSABLE MIDSOLE

NO CHEMICAL
CROSSLINKING

80% LESS RAW MATERIAL

PROCESS

CO2 SAVING

LESS ENERGY CONSUMPTION

LESS MATERIAL WASTE

DIMENSIONAL STABILITY

CONSISTENT QUALITY AND
PERFORMANCE IN EACH MIDSOLE

Supernova SCF is a revolutionary foam, 100% recyclable, with uniform microcellular structure that has a superior mechanical performance, lightness, and energy return, it doesn't contract or deform.

[PT] Supernova SCF é uma espuma revolucionária, 100% reciclável, com estrutura microcelular uniforme que possui desempenho mecânico superior, leveza e retorno de energia, não contrai nem deforma. [ES] Supernova SCF es una espuma revolucionaria, 100% reciclable, con estructura microcelular uniforme que tiene un rendimiento mecánico, ligereza y retorno de energía superiores, no se contrae ni se deforma. [FR] Supernova SCF est une mousse révolutionnaire, 100% recyclable, avec une structure microcellulaire uniforme qui présente des performances mécaniques, une légèreté et un retour d'énergie supérieurs, elle ne se contracte ni ne se déforme. [DE] Supernova SCF ist ein revolutionärer Schaumstoff, der zu 100% recycelbar ist und über eine gleichmäßige mikrozelluläre Struktur verfügt, die über eine hervorragende mechanische Leistung, Leichtigkeit und Energierückgabe verfügt. Er zieht sich nicht zusammen und verformt sich nicht. [NL] Supernova SCF is een revolutionair schuim, 100% recyclebaar, met een uniforme microcellulaire structuur met superieure mechanische prestaties, lichtheid en energieruggave, het krimpt niet en vervormt niet.

NEW
PRODUCT

[FALCON SPEED GREY]

EN ISO 20345:2011 CE S3 HRO SRC
EU 39-48_UK 6-13_MP 247 - 315



1209.06



PROTECTIVE
MIDSOLE

KEVLAR
(PT) Kevlar
(ES) Kevlar
(FR) Kevlar
(DE) Kevlar
(NL) Kevlar

PROTECTIVE
TOE CAP

FIBERGLASS
(PT) Fibra de vidro
(ES) Fibra de Vidrio
(FR) Fibre de Verre
(DE) Glassfaser
(NL) Glasvezel

SOLE

SUPERNOVA SCF
(PT) Supernova SCF
(ES) Supernova SCF
(FR) Supernova SCF
(DE) Supernova SCF
(NL) Supernova SCF

UPPER RAW
MATERIAL

RECYCLED TEXTILE [16%]
(PT) Têxtil reciclado
(ES) Textil reciclado
(FR) Textile recyclé
(DE) Recyceltes Textil
(NL) Gerecycled textiel

LINNING
MATERIAL

BREATHABLE TEXTILE
(PT) Têxtil respirável
(ES) Textil respirable
(FR) Textile respirant
(DE) Atmungsaktiv textil
(NL) Ademend textiel

NEW
PRODUCT

[FALCON SPEED BLUE]

EN ISO 20345:2011 CE S3 HRO SRC
EU 39-48_UK 6-13_MP 247 - 315



1209.11



PROTECTIVE
MIDSOLE

KEVLAR
(PT) Kevlar
(ES) Kevlar
(FR) Kevlar
(DE) Kevlar
(NL) Kevlar

PROTECTIVE
TOE CAP

FIBERGLASS
(PT) Fibra de vidro
(ES) Fibra de Vidrio
(FR) Fibre de Verre
(DE) Glassfaser
(NL) Glasvezel

SOLE

SUPERNOVA SCF
(PT) Supernova SCF
(ES) Supernova SCF
(FR) Supernova SCF
(DE) Supernova SCF
(NL) Supernova SCF

UPPER RAW
MATERIAL

RECYCLED TEXTILE [16%]
(PT) Têxtil reciclado
(ES) Textil reciclado
(FR) Textile recyclé
(DE) Recyceltes Textil
(NL) Gerecycled textiel

LINNING
MATERIAL

BREATHABLE TEXTILE
(PT) Têxtil respirável
(ES) Textil respirable
(FR) Textile respirant
(DE) Atmungsaktiv textil
(NL) Ademend textiel

NEW
PRODUCT

[FALCON GREY]

EN ISO 20345:2011 CE S3 HRO SRC
EU 39-48_UK 6-13_MP 247 - 315



1209.16



PROTECTIVE
MIDSOLE

KEVLAR
(PT) Kevlar
(ES) Kevlar
(FR) Kevlar
(DE) Kevlar
(NL) Kevlar

PROTECTIVE
TOE CAP

FIBERGLASS
(PT) Fibra de vidro
(ES) Fibra de Vidrio
(FR) Fibre de Verre
(DE) Glassfaser
(NL) Glasvezel

SOLE

SUPERNOVA SCF
(PT) Supernova SCF
(ES) Supernova SCF
(FR) Supernova SCF
(DE) Supernova SCF
(NL) Supernova SCF

UPPER RAW
MATERIAL

RECYCLED TEXTILE [16%]
(PT) Têxtil reciclado
(ES) Textil reciclado
(FR) Textile recyclé
(DE) Recyceltes Textil
(NL) Gerecycled textiel

LINNING
MATERIAL

BREATHABLE TEXTILE
(PT) Têxtil respirável
(ES) Textil respirable
(FR) Textile respirant
(DE) Atmungsaktiv textil
(NL) Ademend textiel

NEW
PRODUCT

[FALCON RED]

EN ISO 20345:2011 CE S3 HRO SRC
EU 39-48_UK 6-13_MP 247 - 315



1209.04



PROTECTIVE
MIDSOLE

KEVLAR
(PT) Kevlar
(ES) Kevlar
(FR) Kevlar
(DE) Kevlar
(NL) Kevlar

PROTECTIVE
TOE CAP

FIBERGLASS
(PT) Fibra de vidro
(ES) Fibra de Vidrio
(FR) Fibre de Verre
(DE) Glassfaser
(NL) Glasvezel

SOLE

SUPERNOVA SCF
(PT) Supernova SCF
(ES) Supernova SCF
(FR) Supernova SCF
(DE) Supernova SCF
(NL) Supernova SCF

UPPER RAW
MATERIAL

RECYCLED TEXTILE [16%]
(PT) Têxtil reciclado
(ES) Textil reciclado
(FR) Textile recyclé
(DE) Recyceltes Textil
(NL) Gerecycled textiel

LINNING
MATERIAL

BREATHABLE TEXTILE
(PT) Têxtil respirável
(ES) Textil respirable
(FR) Textile respirant
(DE) Atmungsaktiv textil
(NL) Ademend textiel

NEW
PRODUCT

[FALCON SPEED BLACKOUT]

EN ISO 20345:2011 CE S3 HRO SRC
EU 39-48_UK 6-13_MP 247 - 315



1209.26



PROTECTIVE
MIDSOLE

KEVLAR
(PT) Kevlar
(ES) Kevlar
(FR) Kevlar
(DE) Kevlar
(NL) Kevlar

PROTECTIVE
TOE CAP

FIBERGLASS
(PT) Fibra de vidro
(ES) Fibra de Vidrio
(FR) Fibre de Verre
(DE) Glassfaser
(NL) Glasvezel

SOLE

SUPERNOVA SCF
(PT) Supernova SCF
(ES) Supernova SCF
(FR) Supernova SCF
(DE) Supernova SCF
(NL) Supernova SCF

UPPER RAW
MATERIAL

**WR BREATHABLE
HI-TECH MFN**
(PT) Tecnologia MFN
(ES) Tecnologia MFN
(FR) Technologie MFN
(DE) MFN Technologie
(NL) MFN technologie

LINING
MATERIAL

**BREATHABLE
TEXTILE**
(PT) Têxtil respirável
(ES) Textil respirable
(FR) Textile respirant
(DE) Atmungsaktiv textil
(NL) Ademend textiel

NEW
PRODUCT

[FALCON OLIVE FL]

EN ISO 20345:2011 CE S3 HRO SRC
EU 39-48_UK 6-13_MP 247 - 315



1209.26



FULL LEATHER
-Durability and resistance
-Softness and greater comfort
-Breathability and humidity regulation

PROTECTIVE
MIDSOLE

KEVLAR
(PT) Kevlar
(ES) Kevlar
(FR) Kevlar
(DE) Kevlar
(NL) Kevlar

PROTECTIVE
TOE CAP

FIBERGLASS
(PT) Fibra de vidro
(ES) Fibra de Vidrio
(FR) Fibre de Verre
(DE) Glassfaser
(NL) Glasvezel

SOLE

SUPERNOVA SCF
(PT) Supernova SCF
(ES) Supernova SCF
(FR) Supernova SCF
(DE) Supernova SCF
(NL) Supernova SCF

UPPER RAW
MATERIAL

**NATURAL SMOOTH
LEATHER**
(PT) Pele natural macia
(ES) Piel natural macia
(FR) Cuir souple naturel
(DE) Natürliches weiches Leder
(NL) Natuurlijk zacht leer

LINING
MATERIAL

LEATHER
(PT) Pele
(ES) Piel
(FR) Cuir
(DE) Leder
(NL) Leer

NEW
PRODUCT

[CRUZADER SPEED BLACKOUT]

EN ISO 20345:2011 CE S3 HRO SRC
EU 39-48_UK 6-13_MP 247 - 315



1219.26



PROTECTIVE
MIDSOLE

KEVLAR
(PT) Kevlar
(ES) Kevlar
(FR) Kevlar
(DE) Kevlar
(NL) Kevlar

PROTECTIVE
TOE CAP

FIBERGLASS
(PT) Fibra de vidro
(ES) Fibra de Vidrio
(FR) Fibre de Verre
(DE) Glassfaser
(NL) Glasvezel

SOLE

SUPERNOVA SCF
(PT) Supernova SCF
(ES) Supernova SCF
(FR) Supernova SCF
(DE) Supernova SCF
(NL) Supernova SCF

UPPER RAW
MATERIAL

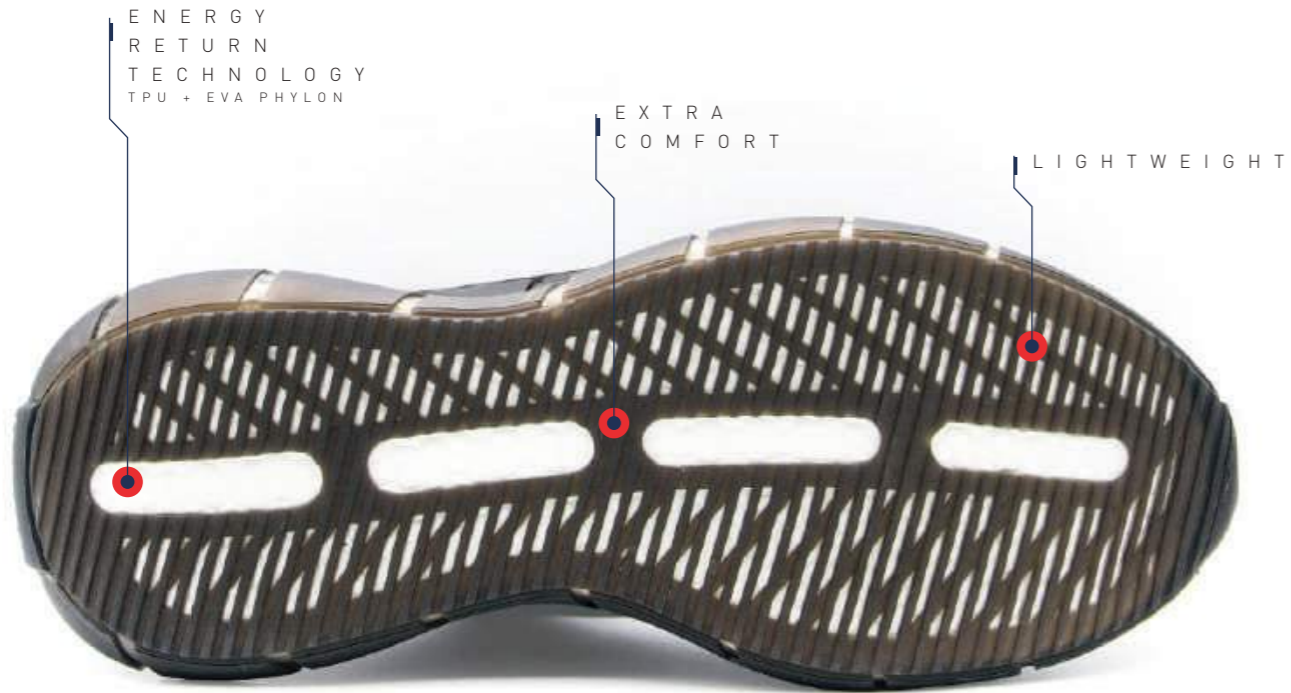
**WR BREATHABLE
HI-TECH MFN**
(PT) Tecnologia MFN
(ES) Tecnologia MFN
(FR) Technologie MFN
(DE) MFN Technologie
(NL) MFN technologie

LINING
MATERIAL

**BREATHABLE
TEXTILE**
(PT) Têxtil respirável
(ES) Textil respirable
(FR) Textile respirant
(DE) Atmungsaktiv textil
(NL) Ademend textiel



02 [SPACE ODDITY]



[STARGATE BLACK]

EN ISO 20345:2011 CE S1 P WRU SRC
EU 35-47_UK 2 1/2-12_MP 217 - 307

NEW PRODUCT
1201.00



PROTECTIVE MIDSOLE
KEVLAR
(PT) Kevlar
(ES) Kevlar
(FR) Kevlar
(DE) Kevlar
(NL) Kevlar

PROTECTIVE TOE CAP
COMPOSITE
(PT) Composite
(ES) Composite
(FR) Composite
(DE) Kunststoffkappe
(NL) Composit

SOLE
TPU + EVA PHYLON
(PT) TPU + Eva Phylon
(ES) TPU + Eva Phylon
(FR) TPU + Eva Phylon
(DE) TPU + Eva Phylon
(NL) TPU + Eva Phylon

UPPER RAW MATERIAL
HI-TECH TEXTILE
(PT) Têxtil Hi-Tech
(ES) Têxtil Hi-Tech
(FR) Têxtil Hi-Tech
(DE) High-Tech-Textil
(NL) Hi-Tech textiel

LINNING MATERIAL
BREATHABLE TEXTILE
(PT) Têxtil respirável
(ES) Têxtil respirable
(FR) Têxtil respirant
(DE) Atmungsaktiv textil
(NL) Ademend textiel



NEW PRODUCT
1201.01

[STARGATE BLUE]

EN ISO 20345:2011 CE S1 P WRU SRC
EU 35-47_UK 2 1/2-12_MP 217 - 307



PROTECTIVE MIDSOLE
KEVLAR
(PT) Kevlar
(ES) Kevlar
(FR) Kevlar
(DE) Kevlar
(NL) Kevlar

PROTECTIVE TOE CAP
COMPOSITE
(PT) Composite
(ES) Composite
(FR) Composite
(DE) Kunststoffkappe
(NL) Composit

SOLE
TPU + EVA PHYLON
(PT) TPU + Eva Phylon
(ES) TPU + Eva Phylon
(FR) TPU + Eva Phylon
(DE) TPU + Eva Phylon
(NL) TPU + Eva Phylon

UPPER RAW MATERIAL
HI-TECH TEXTILE
(PT) Têxtil Hi-Tech
(ES) Têxtil Hi-Tech
(FR) Têxtil Hi-Tech
(DE) High-Tech-Textil
(NL) Hi-Tech textiel

LINNING MATERIAL
BREATHABLE TEXTILE
(PT) Têxtil respirável
(ES) Têxtil respirable
(FR) Têxtil respirant
(DE) Atmungsaktiv textil
(NL) Ademend textiel



1200.10

[STARDUST BLUE]

EN ISO 20345:2011 CE S1 P WRU SRC
EU 33-47_UK 1 1/2-12_MP 202 - 307



PROTECTIVE MIDSOLE

KEVLAR
(PT) Kevlar
(ES) Kevlar
(FR) Kevlar
(DE) Kevlar
(NL) Kevlar

PROTECTIVE TOE CAP

COMPOSITE
(PT) Composite
(ES) Composite
(FR) Composite
(DE) Kunststoffkappe
(NL) Composit

SOLE

TPU + EVA PHYLON
(PT) TPU + Eva Phylon
(ES) TPU + Eva Phylon
(FR) TPU + Eva Phylon
(DE) TPU + Eva Phylon
(NL) TPU + Eva Phylon

UPPER RAW MATERIAL

WR BREATHABLE HI-TECH MF
(PT) Tecnologia MF
(ES) Tecnologia MF
(FR) Technologie MF
(DE) MF Technologie
(NL) MF technologie

LINNING MATERIAL

BLACK DRYLEX TEXTILE
(PT) Têxtil Drylex Preto
(ES) Têxtil Drylex Negro
(FR) Textile Drylex Noir
(DE) Schwarz Drylex textil
(NL) Textiel Drylex Zwart

[STARDUST SILVER]

EN ISO 20345:2011 CE S1 P WRU SRC
EU 35-47_UK 2 1/2-12_MP 217 - 307



1200.20



1200.00

[STARLIGHT BLUE]

EN ISO 20345:2011 CE S1 P WRU SRC
EU 35-47_UK 2 1/2-12_MP 217 - 307



PROTECTIVE MIDSOLE

KEVLAR
(PT) Kevlar
(ES) Kevlar
(FR) Kevlar
(DE) Kevlar
(NL) Kevlar

PROTECTIVE TOE CAP

COMPOSITE
(PT) Composite
(ES) Composite
(FR) Composite
(DE) Kunststoffkappe
(NL) Composit

SOLE

TPU + EVA PHYLON
(PT) TPU + Eva Phylon
(ES) TPU + Eva Phylon
(FR) TPU + Eva Phylon
(DE) TPU + Eva Phylon
(NL) TPU + Eva Phylon

UPPER RAW MATERIAL

WR BREATHABLE HI-TECH MF
(PT) Tecnologia MF
(ES) Tecnologia MF
(FR) Technologie MF
(DE) MF Technologie
(NL) MF technologie

LINNING MATERIAL

BLACK DRYLEX TEXTILE
(PT) Têxtil Drylex Preto
(ES) Têxtil Drylex Negro
(FR) Textile Drylex Noir
(DE) Schwarz Drylex textil
(NL) Textiel Drylex Zwart

PROTECTIVE MIDSOLE

KEVLAR
(PT) Kevlar
(ES) Kevlar
(FR) Kevlar
(DE) Kevlar bv
(NL) Kevlar

PROTECTIVE TOE CAP

COMPOSITE
(PT) Composite
(ES) Composite
(FR) Composite
(DE) Kunststoffkappe
(NL) Composit

SOLE

TPU + EVA PHYLON
(PT) TPU + Eva Phylon
(ES) TPU + Eva Phylon
(FR) TPU + Eva Phylon
(DE) TPU + Eva Phylon
(NL) TPU + Eva Phylon

UPPER RAW MATERIAL

WR BREATHABLE HI-TECH MF
(PT) Tecnologia MF
(ES) Tecnologia MF
(FR) Technologie MF
(DE) MF Technologie
(NL) MF technologie

LINNING MATERIAL

BLACK DRYLEX TEXTILE
(PT) Têxtil Drylex Preto
(ES) Têxtil Drylex Negro
(FR) Textile Drylex Noir
(DE) Schwarz Drylex textil
(NL) Textiel Drylex Zwart

[STARSIGHT BLUE]

EN ISO 20345:2011 CE S1 P WRU SRC
EU 39-47 _UK 6-12 _MP 247 - 307

1400.10



PROTECTIVE MIDSOLE

KEVLAR
(PT) Kevlar
(ES) Kevlar
(FR) Kevlar
(DE) Kevlar
(NL) Kevlar

PROTECTIVE TOE CAP

COMPOSITE
(PT) Composite
(ES) Composite
(FR) Composite
(DE) Kunststoffkappe
(NL) Composiet

SOLE

TPU + EVA PHYLON
(PT) TPU + Eva Phylon
(ES) TPU + Eva Phylon
(FR) TPU + Eva Phylon
(DE) TPU + Eva Phylon
(NL) TPU + Eva Phylon

UPPER RAW MATERIAL

WR BREATHABLE HI-TECH MF
(PT) Tecnologia MF
(ES) Tecnologia MF
(FR) Technologie MF
(DE) MF Technologie
(NL) MF technologie

LINING MATERIAL

BLACK DRYLEX TEXTILE
(PT) Têxtil Drylex Preto
(ES) Textil Drylex Negro
(FR) Textile Drylex Noir
(DE) Schwarz Drylex textil
(NL) Textiel Drylex Zwart

[STARMAN BLUE]

EN ISO 20345:2011 CE S1 P WRU SRC
EU 39-47 _UK 6-12 _MP 247 - 307

1600.10



PROTECTIVE MIDSOLE

KEVLAR
(PT) Kevlar
(ES) Kevlar
(FR) Kevlar
(DE) Kevlar
(NL) Kevlar

PROTECTIVE TOE CAP

COMPOSITE
(PT) Composite
(ES) Composite
(FR) Composite
(DE) Kunststoffkappe
(NL) Composiet

SOLE

TPU + EVA PHYLON
(PT) TPU + Eva Phylon
(ES) TPU + Eva Phylon
(FR) TPU + Eva Phylon
(DE) TPU + Eva Phylon
(NL) TPU + Eva Phylon

UPPER RAW MATERIAL

WR BREATHABLE HI-TECH MF
(PT) Tecnologia MF
(ES) Tecnologia MF
(FR) Technologie MF
(DE) MF Technologie
(NL) MF technologie

LINING MATERIAL

BLACK DRYLEX TEXTILE
(PT) Têxtil Drylex Preto
(ES) Textil Drylex Negro
(FR) Textile Drylex Noir
(DE) Schwarz Drylex textil
(NL) Textiel Drylex Zwart



PROFILED SOLE THAT PROVIDES TOTAL GRIP ON ANY TYPE OF SURFACE

360° MULTIPLE TRACTION SYSTEM



90° HEEL, DESIGNED TO IMPROVE MOBILITY



EN ISO 20345:2011 CE S3 HI CI SRC
EU 36-48_UK 3-13_MP 225 - 315

NEW PRODUCT

1227.01



PROTECTIVE MIDSOLE

KEVLAR
(PT) Kevlar
(ES) Kevlar
(FR) Kevlar
(DE) Kevlar
(NL) Kevlar

PROTECTIVE TOE CAP

FIBERGLASS
(PT) Fibra de vidro
(ES) Fibra de Vidrio
(FR) Fibre de Verre
(DE) Glassfaser
(NL) Glasvezel

SOLE

DOUBLE DENSITY PU
(PT) Dupla Densidade PU
(ES) Doble Densidade PU
(FR) Double Densité PU
(DE) Zweikomponenten PU
(NL) Tweekomponenten PU

UPPER RAW MATERIAL

WR BREATHABLE HI-TECH MF
(PT) Tecnologia MF
(ES) Tecnología MF
(FR) Technologie MF
(DE) MF Technologie
(NL) MF technologie

LINNING MATERIAL

AERPLUS TEXTILE
(PT) Têxtil Aerplus
(ES) Textil Aerplus
(FR) Textile Aerplus
(DE) Aerplus Textil
(NL) Aerplus Textiel



NEW PRODUCT

1027.01

EN ISO 20345:2011 CE S3 HI CI SRC
EU 36-48_UK 3-13_MP 225 - 315



PROTECTIVE MIDSOLE

KEVLAR
(PT) Kevlar
(ES) Kevlar
(FR) Kevlar
(DE) Kevlar
(NL) Kevlar

PROTECTIVE TOE CAP

FIBERGLASS
(PT) Fibra de vidro
(ES) Fibra de Vidrio
(FR) Fibre de Verre
(DE) Glassfaser
(NL) Glasvezel

SOLE

DOUBLE DENSITY PU
(PT) Dupla Densidade PU
(ES) Doble Densidade PU
(FR) Double Densité PU
(DE) Zweikomponenten PU
(NL) Tweekomponenten PU

UPPER RAW MATERIAL

WR BREATHABLE HI-TECH MF
(PT) Tecnologia MF
(ES) Tecnología MF
(FR) Technologie MF
(DE) MF Technologie
(NL) MF technologie

LINNING MATERIAL

AERPLUS TEXTILE
(PT) Têxtil Aerplus
(ES) Textil Aerplus
(FR) Textile Aerplus
(DE) Aerplus Textil
(NL) Aerplus Textiel



NEW
PRODUCT

1227.08

[GLADE GREEN]

EN ISO 20345:2011 CE S3 HI CI SRC
EU 36-48_UK 3-13_MP 225 - 315



PROTECTIVE
MIDSOLE

KEVLAR
(PT) Kevlar
(ES) Kevlar
(FR) Kevlar
(DE) Kevlar
(NL) Kevlar

PROTECTIVE
TOE CAP

FIBERGLASS
(PT) Fibra de vidro
(ES) Fibra de Vidrio
(FR) Fibre de Verre
(DE) Glassfaser
(NL) Glasvezel

SOLE

**DOUBLE DENSITY
PU**
(PT) Dupla Densidade PU
(ES) Doble Densidade PU
(FR) Double Densité PU
(DE) Zweikomponenten PU
(NL) Tweekomponenten PU

UPPER RAW
MATERIAL

**WR BREATHABLE
HI-TECH MF**
(PT) Tecnologia MF
(ES) Tecnología MF
(FR) Technologie MF
(DE) MF Technologie
(NL) MF technologie

LINING
MATERIAL

**AERPLUS
TEXTILE**
(PT) Têxtil Aerplus
(ES) Textil Aerplus
(FR) Textile Aerplus
(DE) Aerplus Textil
(NL) Aerplus Textiel

NEW
PRODUCT

1227.04

[GLADE RED]

EN ISO 20345:2011 CE S3 HI CI SRC
EU 36-48_UK 3-13_MP 225 - 315



PROTECTIVE
MIDSOLE

KEVLAR
(PT) Kevlar
(ES) Kevlar
(FR) Kevlar
(DE) Kevlar
(NL) Kevlar

PROTECTIVE
TOE CAP

FIBERGLASS
(PT) Fibra de vidro
(ES) Fibra de Vidrio
(FR) Fibre de Verre
(DE) Glassfaser
(NL) Glasvezel

SOLE

**DOUBLE DENSITY
PU**
(PT) Dupla Densidade PU
(ES) Doble Densidade PU
(FR) Double Densité PU
(DE) Zweikomponenten PU
(NL) Tweekomponenten PU

UPPER RAW
MATERIAL

**WR BREATHABLE
HI-TECH MF**
(PT) Tecnologia MF
(ES) Tecnología MF
(FR) Technologie MF
(DE) MF Technologie
(NL) MF technologie

LINING
MATERIAL

**AERPLUS
TEXTILE**
(PT) Têxtil Aerplus
(ES) Textil Aerplus
(FR) Textile Aerplus
(DE) Aerplus Textil
(NL) Aerplus Textiel

NEW
PRODUCT

1027.08

[MEADOW GREEN]

EN ISO 20345:2011 CE S3 HI CI SRC
EU 36-48_UK 3-13_MP 225 - 315



PROTECTIVE
MIDSOLE

KEVLAR
(PT) Kevlar
(ES) Kevlar
(FR) Kevlar
(DE) Kevlar
(NL) Kevlar

PROTECTIVE
TOE CAP

FIBERGLASS
(PT) Fibra de vidro
(ES) Fibra de Vidrio
(FR) Fibre de Verre
(DE) Glassfaser
(NL) Glasvezel

SOLE

**DOUBLE DENSITY
PU**
(PT) Dupla Densidade PU
(ES) Doble Densidade PU
(FR) Double Densité PU
(DE) Zweikomponenten PU
(NL) Tweekomponenten PU

UPPER RAW
MATERIAL

**WR BREATHABLE
HI-TECH MF**
(PT) Tecnologia MF
(ES) Tecnología MF
(FR) Technologie MF
(DE) MF Technologie
(NL) MF technologie

LINING
MATERIAL

**AERPLUS
TEXTILE**
(PT) Têxtil Aerplus
(ES) Textil Aerplus
(FR) Textile Aerplus
(DE) Aerplus Textil
(NL) Aerplus Textiel

NEW
PRODUCT

1027.04

[MEADOW RED]

EN ISO 20345:2011 CE S3 HI CI SRC
EU 36-48_UK 3-13_MP 225 - 315



PROTECTIVE
MIDSOLE

KEVLAR
(PT) Kevlar
(ES) Kevlar
(FR) Kevlar
(DE) Kevlar
(NL) Kevlar

PROTECTIVE
TOE CAP

FIBERGLASS
(PT) Fibra de vidro
(ES) Fibra de Vidrio
(FR) Fibre de Verre
(DE) Glassfaser
(NL) Glasvezel

SOLE

**DOUBLE DENSITY
PU**
(PT) Dupla Densidade PU
(ES) Doble Densidade PU
(FR) Double Densité PU
(DE) Zweikomponenten PU
(NL) Tweekomponenten PU

UPPER RAW
MATERIAL

**WR BREATHABLE
HI-TECH MF**
(PT) Tecnologia MF
(ES) Tecnología MF
(FR) Technologie MF
(DE) MF Technologie
(NL) MF technologie

LINING
MATERIAL

**AERPLUS
TEXTILE**
(PT) Têxtil Aerplus
(ES) Textil Aerplus
(FR) Textile Aerplus
(DE) Aerplus Textil
(NL) Aerplus Textiel

NEW
PRODUCT

1227.16

[GLADE SPEED GREY]

EN ISO 20345:2011 CE S3 HI CI SRC
EU 36-48_UK 3-13_MP 225 - 315



PROTECTIVE
MIDSOLE

KEVLAR
(PT) Kevlar
(ES) Kevlar
(FR) Kevlar
(DE) Kevlar
(NL) Kevlar

PROTECTIVE
TOE CAP

FIBERGLASS
(PT) Fibra de vidro
(ES) Fibra de Vidrio
(FR) Fibre de Verre
(DE) Glassfaser
(NL) Glasvezel

SOLE

**DOUBLE DENSITY
PU**
(PT) Dupla Densidade PU
(ES) Doble Densidade PU
(FR) Double Densité PU
(DE) Zweikomponenten PU
(NL) Tweekomponenten PU

UPPER RAW
MATERIAL

**WR BREATHABLE
HI-TECH MF**
(PT) Tecnologia MF
(ES) Tecnología MF
(FR) Technologie MF
(DE) MF Technologie
(NL) MF technologie

LINING
MATERIAL

**AERPLUS
TEXTILE**
(PT) Têxtil Aerplus
(ES) Textil Aerplus
(FR) Textile Aerplus
(DE) Aerplus Textil
(NL) Aerplus Textiel

NEW
PRODUCT

1027.16

[MEADOW SPEED GREY]

EN ISO 20345:2011 CE S3 HI CI SRC
EU 36-48_UK 3-13_MP 225 - 315



PROTECTIVE
MIDSOLE

KEVLAR
(PT) Kevlar
(ES) Kevlar
(FR) Kevlar
(DE) Kevlar
(NL) Kevlar

PROTECTIVE
TOE CAP

FIBERGLASS
(PT) Fibra de vidro
(ES) Fibra de Vidrio
(FR) Fibre de Verre
(DE) Glassfaser
(NL) Glasvezel

SOLE

**DOUBLE DENSITY
PU**
(PT) Dupla Densidade PU
(ES) Doble Densidade PU
(FR) Double Densité PU
(DE) Zweikomponenten PU
(NL) Tweekomponenten PU

UPPER RAW
MATERIAL

**WR BREATHABLE
HI-TECH MF**
(PT) Tecnologia MF
(ES) Tecnología MF
(FR) Technologie MF
(DE) MF Technologie
(NL) MF technologie

LINING
MATERIAL

**AERPLUS
TEXTILE**
(PT) Têxtil Aerplus
(ES) Textil Aerplus
(FR) Textile Aerplus
(DE) Aerplus Textil
(NL) Aerplus Textiel



[JASPER]

EN ISO 20345:2011 CE S3 HI CI SRC
EU 36-48_UK 3-13_MP 225 - 315



1225.00



PROTECTIVE MIDSOLE

KEVLAR
(PT) Kevlar
(ES) Kevlar
(FR) Kevlar
(DE) Kevlar
(NL) Kevlar

PROTECTIVE TOE CAP

FIBERGLASS
(PT) Fibra de vidro
(ES) Fibra de Vidrio
(FR) Fibre de Verre
(DE) Glassfaser
(NL) Glasvezel

SOLE

DOUBLE DENSITY PU
(PT) Dupla Densidade PU
(ES) Doble Densidade PU
(FR) Double Densité PU
(DE) Zweikomponenten PU
(NL) Tweekomponenten PU

UPPER RAW MATERIAL

BLACK NUBUCK LEATHER
(PT) Pele Nubuck Preto
(ES) Cuero Nubuck Negro
(FR) Cuir Nubuck Noir
(DE) Schwarz Nubuck Leder
(NL) Zwart Nubuckleer

LINING MATERIAL

BLUE DRYLEX TEXTILE
(PT) Têxtil Drylex Azul
(ES) Textil Drylex Azul
(FR) Textile Drylex Bleu
(DE) Blau Drylex textil
(NL) Textiel Drylex Blauw

1025.10

[SNOWMASS]

EN ISO 20345:2011 CE S3 HI CI SRC WR
EU 36-48_UK 3-13_MP 225 - 315



*AVAILABLE WITH METATARSAL PROTECTION
REF.1025.20



PROTECTIVE MIDSOLE

KEVLAR
(PT) Kevlar
(ES) Kevlar
(FR) Kevlar
(DE) Kevlar
(NL) Kevlar

PROTECTIVE TOE CAP

FIBERGLASS
(PT) Fibra de vidro
(ES) Fibra de Vidrio
(FR) Fibre de Verre
(DE) Glassfaser
(NL) Glasvezel

SOLE

DOUBLE DENSITY PU
(PT) Dupla Densidade PU
(ES) Doble Densidade PU
(FR) Double Densité PU
(DE) Zweikomponenten PU
(NL) Tweekomponenten PU

UPPER RAW MATERIAL

BLACK NUBUCK LEATHER
(PT) Pele Nubuck Preto
(ES) Cuero Nubuck Negro
(FR) Cuir Nubuck Noir
(DE) Schwarz Nubuck Leder
(NL) Zwart Nubuckleer

LINING MATERIAL

AQUATEX WATER-PROOF MEMBRANE
(PT) Membrana Impermeável Aquatex
(ES) Membrana Impermeable Aquatex
(FR) Membrane Impermeable Aquatex
(DE) Aquatex Wasserdichte Membran
(NL) Aquatex Waterdicht Membran

1025.00

[CANYON BLACK]

EN ISO 20345:2011 CE S3 HI CI SRC
EU 36-48_UK 3-13_MP 225 - 315



PROTECTIVE MIDSOLE

KEVLAR
(PT) Kevlar
(ES) Kevlar
(FR) Kevlar
(DE) Kevlar
(NL) Kevlar

PROTECTIVE TOE CAP

FIBERGLASS
(PT) Fibra de vidro
(ES) Fibra de Vidrio
(FR) Fibre de Verre
(DE) Glassfaser
(NL) Glasvezel

SOLE

DOUBLE DENSITY PU
(PT) Dupla Densidade PU
(ES) Doble Densidade PU
(FR) Double Densité PU
(DE) Zweikomponenten PU
(NL) Tweekomponenten PU

UPPER RAW MATERIAL

BLACK NUBUCK LEATHER
(PT) Pele Nubuck Preto
(ES) Cuero Nubuck Negro
(FR) Cuir Nubuck Noir
(DE) Schwarz Nubuck Leder
(NL) Zwart Nubuckleer

LINING MATERIAL

BLUE DRYLEX TEXTILE
(PT) Têxtil Drylex Azul
(ES) Textil Drylex Azul
(FR) Textile Drylex Bleu
(DE) Blau Drylex textil
(NL) Textiel Drylex Blauw

1025.25

[YELLOWSTONE M]

EN ISO 20345:2011 CE S3 WR HI CI M SRC
EU 39-48_UK 6-13_MP 247 - 315



PROTECTIVE MIDSOLE

KEVLAR
(PT) Kevlar
(ES) Kevlar
(FR) Kevlar
(DE) Kevlar
(NL) Kevlar

PROTECTIVE TOE CAP

FIBERGLASS
(PT) Fibra de vidro
(ES) Fibra de Vidrio
(FR) Fibre de Verre
(DE) Glassfaser
(NL) Glasvezel

SOLE

DOUBLE DENSITY PU
(PT) Dupla Densidade PU
(ES) Doble Densidade PU
(FR) Double Densité PU
(DE) Zweikomponenten PU
(NL) Tweekomponenten PU

UPPER RAW MATERIAL

BLACK NUBUCK LEATHER
(PT) Pele Nubuck Preto
(ES) Cuero Nubuck Negro
(FR) Cuir Nubuck Noir
(DE) Schwarz Nubuck Leder
(NL) Zwart Nubuckleer

LINING MATERIAL

AQUATEX WATER-PROOF MEMBRANE
(PT) Membrana Impermeável Aquatex
(ES) Membrana Impermeable Aquatex
(FR) Membrane Impermeable Aquatex
(DE) Aquatex Wasserdichte Membran
(NL) Aquatex Waterdicht Membran

1026.42



[YOSEMITE]

EN ISO 20345:2011 CE S3 HI CI SRC
EU 39-48_UK 6-13_MP 247 - 315



PROTECTIVE MIDSOLE

KEVLAR
(PT) Kevlar
(ES) Kevlar
(FR) Kevlar
(DE) Kevlar
(NL) Kevlar

PROTECTIVE TOE CAP

FIBER GLASS
(PT) Fibra de vidro
(ES) Fibra de Vidrio
(FR) Fibre de Verre
(DE) Glasfaser
(NL) Glasvezel

SOLE

DOUBLE DENSITY PU
(PT) Dupla Densidade PU
(ES) Doble Densidade PU
(FR) Double Densité PU
(DE) Zweikomponenten PU
(NL) Tweekomponenten PU

UPPER RAW MATERIAL

WR FLOATER COGNAC
(PT) WR Floater Cognac
(ES) Coñac Floater WR
(FR) Cuir Pleine Fleur WR Cognac
(DE) WR Floater Cognac
(NL) WR Floater Cognac

LINING MATERIAL

BREATHABLE DRYLEX TEXTILE
(PT) Têxtil Dri-TEX
(ES) Textil Dri-TEX
(FR) Textile Dri-TEX Bleu
(DE) Dri-TEX textil
(NL) Textiel Dri-TEX

1674.62



[APALACHE]

EN ISO 20345:2011 CE S3 WR HI CI SRC
EU 36-48_UK 3-13_MP 225 - 315



PROTECTIVE MIDSOLE

KEVLAR
(PT) Kevlar
(ES) Kevlar
(FR) Kevlar
(DE) Kevlar
(NL) Kevlar

PROTECTIVE TOE CAP

FIBER GLASS
(PT) Fibra de vidro
(ES) Fibra de Vidrio
(FR) Fibre de Verre
(DE) Glasfaser
(NL) Glasvezel

SOLE

DOUBLE DENSITY PU
(PT) Dupla Densidade PU
(ES) Doble Densidade PU
(FR) Double Densité PU
(DE) Zweikomponenten PU
(NL) Tweekomponenten PU

UPPER RAW MATERIAL

NUBUCK LEATHER
(PT) Pele Nubuck
(ES) Cuero Nubuck
(FR) Cuir Nubuck
(DE) Nubuck Leder
(NL) Nubuckleer

LINING MATERIAL

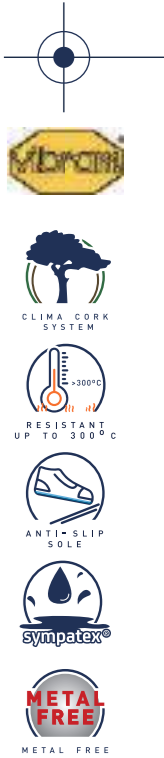
AQUATEX WATER-PROOF MEMBRANE
(PT) Membrana Impermeável Aquatex
(ES) Membrana Impermeable Aquatex
(FR) Membrane Impermeable Aquatex
(DE) Aquatex Wasserdichte Membrane
(NL) Aquatex Waterdicht Membran

1024.32



[CASCADES BROWN 23]

EN ISO 20345:2022 CE S7L CI HI HRO SC SR
EU 39-47_UK 6-12_MP 247 - 307



PROTECTIVE MIDSOLE

KEVLAR
(PT) Kevlar
(ES) Kevlar
(FR) Kevlar
(DE) Kevlar
(NL) Kevlar

PROTECTIVE TOE CAP

FIBER GLASS
(PT) Fibra de vidro
(ES) Fibra de Vidrio
(FR) Fibre de Verre
(DE) Glasfaser
(NL) Glasvezel

SOLE

DIRECT INJECTED PU + VIBRAM
(PT) PU Diretamente Injetado + Vibram
(ES) PU inyectado directo + Vibram
(FR) PU Injecté Directement + Vibram
(DE) Direkt Eingespritztes PU + Vibram
(NL) Direct geïnjecteerd PU + Vibram

UPPER RAW MATERIAL

BROWN CRAZY HORSE LEATHER
(PT) Pele Crazy Horse Castanha
(ES) Cuero Crazy Horse Marrón
(FR) Cuir Crazy Horse Marron
(DE) Braun Crazy Horse Leder
(NL) Bruin Crazy Horse Leer

LINING MATERIAL

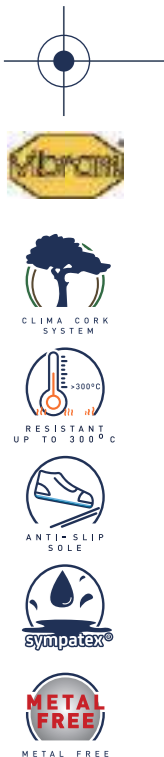
SYMPATEX WATER-PROOF MEMBRANE
(PT) Membrana Impermeável Sympatex
(ES) Membrana Impermeable Sympatex
(FR) Membrane Impermeable Sympatex
(DE) Sympatex Wasserdichte Membrane
(NL) Sympatex Waterdicht Membran

1024.36



[CASCADES GREY 23]

EN ISO 20345:2022 CE S7L CI HI HRO SC SR
EU 39-47_UK 6-12_MP 247 - 307



PROTECTIVE MIDSOLE

KEVLAR
(PT) Kevlar
(ES) Kevlar
(FR) Kevlar
(DE) Kevlar
(NL) Kevlar

PROTECTIVE TOE CAP

FIBER GLASS
(PT) Fibra de vidro
(ES) Fibra de Vidrio
(FR) Fibre de Verre
(DE) Glasfaser
(NL) Glasvezel

SOLE

DIRECT INJECTED PU + VIBRAM
(PT) PU Diretamente Injetado + Vibram
(ES) PU inyectado directo + Vibram
(FR) PU Injecté Directement + Vibram
(DE) Direkt Eingespritztes PU + Vibram
(NL) Direct geïnjecteerd PU + Vibram

UPPER RAW MATERIAL

GREY CRAZY HORSE LEATHER
(PT) Pele Crazy Horse Cinza
(ES) Cuero Crazy Horse Gris
(FR) Cuir Crazy Horse Gris
(DE) Grau Crazy Horse Leder
(NL) Grijs Crazy Horse Leer

LINING MATERIAL

SYMPATEX WATER-PROOF MEMBRANE
(PT) Membrana Impermeável Sympatex
(ES) Membrana Impermeable Sympatex
(FR) Membrane Impermeable Sympatex
(DE) Sympatex Wasserdichte Membrane
(NL) Sympatex Waterdicht Membran



SPECIALLY DESIGNED FOR
GREATER CONTACT BETWEEN
SOLE AND THE GROUND

DIMINISHED FATIGUE,
FASCEITIS AND DIGITAL
CLAW INCREASING COMFORT



NEW
PRODUCT

1203.06

[JABBA]

EN ISO 20345:2011 CE S3 SRC
EU 35-48_UK 2 1/2-13_MP 217 - 315



PROTECTIVE
MIDSOLE

KEVLAR
(PT) Kevlar
(ES) Kevlar
(FR) Kevlar
(DE) Kevlar
(NL) Kevlar

PROTECTIVE
TOE CAP

COMPOSITE
(PT) Composite
(ES) Composite
(FR) Composite
(DE) Kunststoffkappe
(NL) Composit

SOLE

DOUBLE DENSITY
PU
(PT) Dupla Densidade PU
(ES) Doble Densidade PU
(FR) Double Densité PU
(DE) Zweikomponenten PU
(NL) Tweekomponenten PU

UPPER RAW
MATERIAL

BREATHABLE K3D
TEXTILE
(PT) Têxtil K3D
(ES) Textil K3D
(FR) Textil K3D
(DE) K3D Textil
(NL) Textiel K3D

LINNING
MATERIAL

DRYLEX
TEXTILE
(PT) Têxtil Drylex
(ES) Textil Drylex
(FR) Textile Drylex
(DE) Drylex textil
(NL) Textiel Drylex

[CHEWIE 22]

EN ISO 20345:2011 CE S3 SRC
EU 35-48_UK 2 1/2-13_MP 217 - 315



1203.11



PROTECTIVE MIDSOLE

KEVLAR
(PT) Kevlar
(ES) Kevlar
(FR) Kevlar
(DE) Kevlar
(NL) Kevlar

PROTECTIVE TOE CAP

COMPOSITE
(PT) Composite
(ES) Composite
(FR) Composite
(DE) Kunststoffkappe
(NL) Composiet

SOLE

DOUBLE DENSITY PU
(PT) Dupla Densidade PU
(ES) Doble Densidade PU
(FR) Double Densité PU
(DE) Zweikomponenten PU
(NL) Tweekomponenten PU

UPPER RAW MATERIAL

BREATHABLE K3D TEXTILE
(PT) Têxtil K3D
(ES) Textil K3D
(FR) Textil K3D
(DE) K3D Textil
(NL) Textiel K3D

LINING MATERIAL

BLUE DRYLEX TEXTILE
(PT) Têxtil Drylex Azul
(ES) Textil Drylex Azul
(FR) Textile Drylex Bleu
(DE) Blau Drylex textil
(NL) Textiel Drylex Blauw

NEW PRODUCT

1204.12

[YODA TAUPE FL]

EN ISO 20345:2022 CE S3L HI CI HRO FO SR
EU 35-48_UK 2 1/2-13_MP 217 - 315



FULL LEATHER
-Durability and resistance
-Softness and greater comfort
-Breathability and humidity regulation



PROTECTIVE MIDSOLE

KEVLAR
(PT) Kevlar
(ES) Kevlar
(FR) Kevlar
(DE) Kevlar
(NL) Kevlar

PROTECTIVE TOE CAP

COMPOSITE
(PT) Composite
(ES) Composite
(FR) Composite
(DE) Kunststoffkappe
(NL) Composiet

SOLE

DIRECT INJECTED PU + RUBBER
(PT) PU Diretamente Injetado + Borracha
(ES) PU Inyectado directo + Caucho
(FR) PU Injecté Directement + Nitril
(DE) Direkt Eingespritztes PU + Gummi
(NL) Direct geïnjecteerd PU + Rubber

UPPER RAW MATERIAL

NATURAL SMOOTH LEATHER
(PT) Pele natural macia
(ES) Piel natural macia
(FR) Cuir souple naturel
(DE) Natürliches weiches Leder
(NL) Natuurlijk zacht leer

LINING MATERIAL

LEATHER
(PT) Pele
(ES) Piel
(FR) Cuir
(DE) Leder
(NL) Leer

1203.17



PROTECTIVE MIDSOLE

KEVLAR
(PT) Kevlar
(ES) Kevlar
(FR) Kevlar
(DE) Kevlar
(NL) Kevlar

PROTECTIVE TOE CAP

COMPOSITE
(PT) Composite
(ES) Composite
(FR) Composite
(DE) Kunststoffkappe
(NL) Composiet

SOLE

DOUBLE DENSITY PU
(PT) Dupla Densidade PU
(ES) Doble Densidade PU
(FR) Double Densité PU
(DE) Zweikomponenten PU
(NL) Tweekomponenten PU

UPPER RAW MATERIAL

BREATHABLE K3D TEXTILE
(PT) Têxtil K3D
(ES) Textil K3D
(FR) Textil K3D
(DE) K3D Textil
(NL) Textiel K3D

LINING MATERIAL

ORANGE DRYLEX TEXTILE
(PT) Têxtil Drylex Laranja
(ES) Textil Drylex Naranja
(FR) Textile Drylex Orange
(DE) OrangeDrylex textil
(NL) Textiel Drylex Oranje

NEW PRODUCT

1004.12

[LANDO TAUPE FL]

EN ISO 20345:2022 CE S3L HI CI HRO FO SR
EU 35-48_UK 2 1/2-13_MP 217 - 315



FULL LEATHER
-Durability and resistance
-Softness and greater comfort
-Breathability and humidity regulation



PROTECTIVE MIDSOLE

KEVLAR
(PT) Kevlar
(ES) Kevlar
(FR) Kevlar
(DE) Kevlar
(NL) Kevlar

PROTECTIVE TOE CAP

COMPOSITE
(PT) Composite
(ES) Composite
(FR) Composite
(DE) Kunststoffkappe
(NL) Composiet

SOLE

DIRECT INJECTED PU + RUBBER
(PT) PU Diretamente Injetado + Borracha
(ES) PU Inyectado directo + Caucho
(FR) PU Injecté Directement + Nitril
(DE) Direkt Eingespritztes PU + Gummi
(NL) Direct geïnjecteerd PU + Rubber

UPPER RAW MATERIAL

NATURAL SMOOTH LEATHER
(PT) Pele natural macia
(ES) Piel natural macia
(FR) Cuir souple naturel
(DE) Natürliches weiches Leder
(NL) Natuurlijk zacht leer

LINING MATERIAL

LEATHER
(PT) Pele
(ES) Piel
(FR) Cuir
(DE) Leder
(NL) Leer



NEW
PRODUCT

1204.01

**PROTECTIVE
MIDSOLE**

KEVLAR
(PT) Kevlar
(ES) Kevlar
(FR) Kevlar
(DE) Kevlar
(NL) Kevlar

**PROTECTIVE
TOE CAP**

COMPOSITE
(PT) Composite
(ES) Composite
(FR) Composite
(DE) Kunststoffkappe
(NL) Composiet

SOLE

**DIRECT INJECTED
PU + RUBBER**
(PT) PU Diretamente Injetado + Borracha
(ES) PU injectado directo + Caucho
(FR) PU Injecté Directement + Nitril
(DE) Direkt Eingespritztes PU + Gummi
(NL) Direct geïnjecteerd PU + Rubber

**UPPER RAW
MATERIAL**

NUBUCK LEATHER
(PT) Pele Nubuck
(ES) Cuero Nobuck
(FR) Cuir Nubuck
(DE) Nubuck Leder
(NL) Nubuckleer

**LINNING
MATERIAL**

LEATHER
(PT) Pele
(ES) Piel
(FR) Cuir
(DE) Leder
(NL) Leer

[YODA BLUE FL]
EN ISO 20345:2022 CE S3L HI CI HRO FO SR
EU 35-48_UK 2 1/2-13_MP 217 - 315

FULL LEATHER

- Durability and resistance
- Softness and greater comfort
- Breathability and humidity regulation



VHQ
VERY HIGH QUALITY



NEW
PRODUCT

1004.01

**PROTECTIVE
MIDSOLE**

KEVLAR
(PT) Kevlar
(ES) Kevlar
(FR) Kevlar
(DE) Kevlar
(NL) Kevlar

**PROTECTIVE
TOE CAP**

COMPOSITE
(PT) Composite
(ES) Composite
(FR) Composite
(DE) Kunststoffkappe
(NL) Composiet

SOLE

**DIRECT INJECTED
PU + RUBBER**
(PT) PU Diretamente Injetado + Borracha
(ES) PU injectado directo + Caucho
(FR) PU Injecté Directement + Nitril
(DE) Direkt Eingespritztes PU + Gummi
(NL) Direct geïnjecteerd PU + Rubber

**UPPER RAW
MATERIAL**

NUBUCK LEATHER
(PT) Pele Nubuck
(ES) Cuero Nobuck
(FR) Cuir Nubuck
(DE) Nubuck Leder
(NL) Nubuckleer

**LINNING
MATERIAL**

LEATHER
(PT) Pele
(ES) Piel
(FR) Cuir
(DE) Leder
(NL) Leer

[LANDO BLUE FL]
EN ISO 20345:2022 CE S3L HI CI HRO FO SR
EU 35-48_UK 2 1/2-13_MP 217 - 315

FULL LEATHER

- Durability and resistance
- Softness and greater comfort
- Breathability and humidity regulation



VHQ
VERY HIGH QUALITY



[YODA BROWN]

EN ISO 20345:2022 CE S3L HI CI HRO FO SR
EU 35-48_UK 2 1/2-13_MP 217 - 315



1204.02



PROTECTIVE MIDSOLE

KEVLAR
(PT) Kevlar
(ES) Kevlar
(FR) Kevlar
(DE) Kevlar
(NL) Kevlar

PROTECTIVE TOE CAP

COMPOSITE
(PT) Composite
(ES) Composite
(FR) Composite
(DE) Kunststoffkappe
(NL) Composit

SOLE

DIRECT INJECTED PU + RUBBER
(PT) PU Diretamente Injetado + Borracha
(ES) PU injectado directo + Caucho
(FR) PU Injecté Directement + Nitril
(DE) Direkt Eingespritztes PU + Gummi
(NL) Direct geïnjecteerd PU + Rubber

UPPER RAW MATERIAL

BROWN NUBUCK WR LEATHER
(PT) Pele Nubuck Castanha WR
(ES) Cuero Nobuk Marrón WR
(FR) Cuir Nubuck Marron WR
(DE) Braun Nubuck Leder WR
(NL) Bruin Nubuckleer WR

LINNING MATERIAL

BLACK DRYLEX TEXTILE
(PT) Têxtil Drylex Preto
(ES) Textil Drylex Negro
(FR) Textile Drylex Noir
(DE) Schwarz Drylex textil
(NL) Textiel Drylex Zwart

[VADER BLACK]

EN ISO 20345:2022 CE S3L HI CI HRO FO SR
EU 35-48_UK 2 1/2-13_MP 217 - 315



1204.00



PROTECTIVE MIDSOLE

KEVLAR
(PT) Kevlar
(ES) Kevlar
(FR) Kevlar
(DE) Kevlar
(NL) Kevlar

PROTECTIVE TOE CAP

COMPOSITE
(PT) Composite
(ES) Composite
(FR) Composite
(DE) Kunststoffkappe
(NL) Composit

SOLE

DIRECT INJECTED PU + RUBBER
(PT) PU Diretamente Injetado + Borracha
(ES) PU injectado directo + Caucho
(FR) PU Injecté Directement + Nitril
(DE) Direkt Eingespritztes PU + Gummi
(NL) Direct geïnjecteerd PU + Rubber

UPPER RAW MATERIAL

BLACK FULL GRAIN LEATHER
(PT) Pele de Flor Integral Preta
(ES) Cuero Full Grain Negro
(FR) Cuir Pleine Fleur Grainé Noir
(DE) Schwarz Glattleder
(NL) Zwart Volnerfleer

LINNING MATERIAL

GREY VADICONFORT TEXTILE
(PT) Têxtil Cinza Vadiconfort
(ES) Textil Gris Vadiconfort
(FR) Textile Vadiconfort Gris
(DE) Grau Vadiconfort textil
(NL) Textiel Vadiconfort

[LANDO BROWN]

EN ISO 20345:2022 CE S3L HI CI HRO FO SR
EU 35-48_UK 2 1/2-13_MP 217 - 315



1004.02



PROTECTIVE MIDSOLE

KEVLAR
(PT) Kevlar
(ES) Kevlar
(FR) Kevlar
(DE) Kevlar
(NL) Kevlar

PROTECTIVE TOE CAP

COMPOSITE
(PT) Composite
(ES) Composite
(FR) Composite
(DE) Kunststoffkappe
(NL) Composit

SOLE

DIRECT INJECTED PU + RUBBER
(PT) PU Diretamente Injetado + Borracha
(ES) PU injectado directo + Caucho
(FR) PU Injecté Directement + Nitril
(DE) Direkt Eingespritztes PU + Gummi
(NL) Direct geïnjecteerd PU + Rubber

UPPER RAW MATERIAL

NUBUCK WR LEATHER
(PT) Pele Nubuck WR
(ES) Cuero Nobuck WR
(FR) Cuir Nubuck WR
(DE) Nubuck Leder WR
(NL) Nubuckleer WR

LINNING MATERIAL

BLACK DRYLEX TEXTILE
(PT) Têxtil Drylex Preto
(ES) Textil Drylex Negro
(FR) Textile Drylex Noir
(DE) Schwarz Drylex textil
(NL) Textiel Drylex Zwart

[KENOBI BLACK]

EN ISO 20345:2022 CE S3L HI CI HRO FO SR
EU 35-48_UK 2 1/2-13_MP 217 - 315



1004.00



PROTECTIVE MIDSOLE

KEVLAR
(PT) Kevlar
(ES) Kevlar
(FR) Kevlar
(DE) Kevlar
(NL) Kevlar

PROTECTIVE TOE CAP

COMPOSITE
(PT) Composite
(ES) Composite
(FR) Composite
(DE) Kunststoffkappe
(NL) Composit

SOLE

DIRECT INJECTED PU + RUBBER
(PT) PU Diretamente Injetado + Borracha
(ES) PU injectado directo + Caucho
(FR) PU Injecté Directement + Nitril
(DE) Direkt Eingespritztes PU + Gummi
(NL) Direct geïnjecteerd PU + Rubber

UPPER RAW MATERIAL

BLACK FULL GRAIN LEATHER
(PT) Pele de Flor Integral Preta
(ES) Cuero Full Grain Negro
(FR) Cuir Pleine Fleur Grainé Noir
(DE) Schwarz Glattleder
(NL) Zwart Volnerfleer

LINNING MATERIAL

GREY VADICONFORT TEXTILE
(PT) Têxtil Cinza Vadiconfort
(ES) Textil Gris Vadiconfort
(FR) Textile Vadiconfort Gris
(DE) Grau Vadiconfort textil
(NL) Textiel Vadiconfort



[LYNX EARTH]
EN ISO 20345:2011 CE S3 SRC
EU 35-48_UK 2 1/2-13_MP 217 - 315

NEW PRODUCT
1257.06



- 97% RECYCLED TEXTILE
- ES6 ELECTRO STATIC DISCHARGE
- RECYCLABLE
- METAL FREE
- LIGHTWEIGHT
- FLEXIBLE

- PROTECTIVE MIDSOLE**
KEVLAR
(PT) Kevlar
(ES) Kevlar
(FR) Kevlar
(DE) Kevlar
(NL) Kevlar
- PROTECTIVE TOE CAP**
COMPOSITE
(PT) Composite
(ES) Composite
(FR) Composite
(DE) Kunststoffkappe
(NL) Composit
- SOLE**
DOUBLE DENSITY PU W/ 15% CORK
(PT) Dupla Densidade PU + 15% cortiça
(ES) Doble Densidade PU + 15% corcho
(FR) Double Densité PU + 15% corcho
(DE) Zweikomponenten PU
(NL) Tweekomponenten PU
- UPPER RAW MATERIAL**
RECYCLED TEXTILE (97%)
(PT) Têxtil reciclado
(ES) Textil reciclado
(FR) Textile recyclé
(DE) Recyceltes Textil
(NL) Gerecycled textiel
- LINNING MATERIAL**
RECYCLED TEXTILE
(PT) Têxtil reciclado
(ES) Textil reciclado
(FR) Textile recyclé
(DE) Recyceltes Textil
(NL) Gerecycled textiel

NEW PRODUCT

1257.10

[LYNX ICE]
EN ISO 20345:2011 CE S3 SRC
EU 35-48_UK 2 1/2-13_MP 217 - 315



- ES6 ELECTRO STATIC DISCHARGE
- METAL FREE
- LIGHTWEIGHT
- FLEXIBLE

- PROTECTIVE MIDSOLE**
KEVLAR
(PT) Kevlar
(ES) Kevlar
(FR) Kevlar
(DE) Kevlar
(NL) Kevlar
- PROTECTIVE TOE CAP**
COMPOSITE
(PT) Composite
(ES) Composite
(FR) Composite
(DE) Kunststoffkappe
(NL) Composit
- SOLE**
DOUBLE DENSITY PU
(PT) Dupla Densidade PU
(ES) Doble Densidade PU
(FR) Double Densité PU
(DE) Zweikomponenten PU
(NL) Tweekomponenten PU
- UPPER RAW MATERIAL**
BREATHABLE TEXTILE
(PT) Têxtil respirável
(ES) Textil respirable
(FR) Textile respirant
(DE) Atmungsaktiv textil
(NL) Ademend textiel
- LINNING MATERIAL**
BREATHABLE TEXTILE
(PT) Têxtil respirável
(ES) Textil respirable
(FR) Textile respirant
(DE) Atmungsaktiv textil
(NL) Ademend textiel



[LYNX BLACK]

EN ISO 20345:2011 CE S3 SRC
EU 35-48_UK 2 1/2-13_MP 217 - 315



1257.50



PROTECTIVE MIDSOLE

KEVLAR
(PT) Kevlar
(ES) Kevlar
(FR) Kevlar
(DE) Kevlar
(NL) Kevlar

PROTECTIVE TOE CAP

COMPOSITE
(PT) Composite
(ES) Composite
(FR) Composite
(DE) Kunststoffkappe
(NL) Composit

SOLE

DOUBLE DENSITY PU
(PT) Dupla Densidade PU
(ES) Doble Densidade PU
(FR) Double Densité PU
(DE) Zweikomponenten PU
(NL) Tweekomponenten PU

UPPER RAW MATERIAL

WR BREATHABLE HI-TECH MF
(PT) Tecnologia MF
(ES) Tecnología MF
(FR) Technologie MF
(DE) MF Technologie
(NL) MF technologie

LINING MATERIAL

BLACK DRYLEX TEXTILE
(PT) Têxtil Drylex Preto
(ES) Textil Drylex Negro
(FR) Textile Drylex Noir
(DE) Schwarz Drylex textil
(NL) Textiel Drylex Zwart

[LYNX RED]

EN ISO 20345:2011 CE S3 SRC
EU 35-48_UK 2 1/2-13_MP 217 - 315



1257.54



PROTECTIVE MIDSOLE

KEVLAR
(PT) Kevlar
(ES) Kevlar
(FR) Kevlar
(DE) Kevlar
(NL) Kevlar

PROTECTIVE TOE CAP

COMPOSITE
(PT) Composite
(ES) Composite
(FR) Composite
(DE) Kunststoffkappe
(NL) Composit

SOLE

DOUBLE DENSITY PU
(PT) Dupla Densidade PU
(ES) Doble Densidade PU
(FR) Double Densité PU
(DE) Zweikomponenten PU
(NL) Tweekomponenten PU

UPPER RAW MATERIAL

WR BREATHABLE HI-TECH MF
(PT) Tecnologia MF
(ES) Tecnología MF
(FR) Technologie MF
(DE) MF Technologie
(NL) MF technologie

LINING MATERIAL

RED DRYLEX TEXTILE
(PT) Têxtil Drylex Vermelho
(ES) Textil Drylex Rojo
(FR) Textile Drylex Rouge
(DE) Rot Drylex textil
(NL) Textiel Drylex Rood

[LYNX BLUE]

EN ISO 20345:2011 CE S3 SRC
EU 35-48_UK 2 1/2-13_MP 217 - 315



1257.51



PROTECTIVE MIDSOLE

KEVLAR
(PT) Kevlar
(ES) Kevlar
(FR) Kevlar
(DE) Kevlar
(NL) Kevlar

PROTECTIVE TOE CAP

COMPOSITE
(PT) Composite
(ES) Composite
(FR) Composite
(DE) Kunststoffkappe
(NL) Composit

SOLE

DOUBLE DENSITY PU
(PT) Dupla Densidade PU
(ES) Doble Densidade PU
(FR) Double Densité PU
(DE) Zweikomponenten PU
(NL) Tweekomponenten PU

UPPER RAW MATERIAL

WR BREATHABLE HI-TECH MF
(PT) Tecnologia MF
(ES) Tecnología MF
(FR) Technologie MF
(DE) MF Technologie
(NL) MF technologie

LINING MATERIAL

BLUE DRYLEX TEXTILE
(PT) Têxtil Drylex Azul
(ES) Textil Drylex Azul
(FR) Textile Drylex Bleu
(DE) Blau Drylex textil
(NL) Textiel Drylex Blauw

[ARA]

EN ISO 20345:2011 CE S1 P SRC
EU 35-48_UK 2 1/2-13_MP 217 - 315



1257.61



PROTECTIVE MIDSOLE

KEVLAR
(PT) Kevlar
(ES) Kevlar
(FR) Kevlar
(DE) Kevlar
(NL) Kevlar

PROTECTIVE TOE CAP

COMPOSITE
(PT) Composite
(ES) Composite
(FR) Composite
(DE) Kunststoffkappe
(NL) Composit

SOLE

DOUBLE DENSITY PU
(PT) Dupla Densidade PU
(ES) Doble Densidade PU
(FR) Double Densité PU
(DE) Zweikomponenten PU
(NL) Tweekomponenten PU

UPPER RAW MATERIAL

WR BREATHABLE HI-TECH MF
(PT) Tecnologia MF
(ES) Tecnología MF
(FR) Technologie MF
(DE) MF Technologie
(NL) MF technologie

LINING MATERIAL

BLUE DRYLEX TEXTILE
(PT) Têxtil Drylex Azul
(ES) Textil Drylex Azul
(FR) Textile Drylex Bleu
(DE) Blau Drylex textil
(NL) Textiel Drylex Blauw

[VAGOS]

EN ISO 20345:2022 CE S2 SR
EU 35-47_UK 2 1/2-12_MP 217 - 307



1111.23



PROTECTIVE MIDSOLE

-
- (PT) -
- (ES) -
- (FR) -
- (DE) -
- (NL) -

PROTECTIVE TOE CAP

- COMPOSITE
- (PT) Composite
- (ES) Composite
- (FR) Composite
- (DE) Kunststoffkappe
- (NL) Composiet

SOLE

- DOUBLE DENSITY PU
- (PT) Dupla Densidade PU
- (ES) Doble Densidade PU
- (FR) Double Densité PU
- (DE) Zweikomponenten PU
- (NL) Tweekomponenten PU

UPPER RAW MATERIAL

- VEGAN MICROFIBER
- (PT) Microfibra Vegan
- (ES) Microfibra Vegan
- (FR) Microfibre Vegan
- (DE) Mikrofaser Vegan
- (NL) Microvezel Vegan

LINING MATERIAL

- GREY DRYLEX TEXTILE
- (PT) Têxtil Drylex Cinza
- (ES) Textil Drylex Gris
- (FR) Textile Drylex Gris
- (DE) Grau Drylex textil
- (NL) Textiel Drylex Grijs



1204.30



PROTECTIVE MIDSOLE

- KEVLAR
- (PT) Kevlar
- (ES) Kevlar
- (FR) Kevlar
- (DE) Kevlar
- (NL) Kevlar

PROTECTIVE TOE CAP

- COMPOSITE
- (PT) Composite
- (ES) Composite
- (FR) Composite
- (DE) Kunststoffkappe
- (NL) Composiet

SOLE

- DOUBLE DENSITY PU
- (PT) Dupla Densidade PU
- (ES) Doble Densidade PU
- (FR) Double Densité PU
- (DE) Zweikomponenten PU
- (NL) Tweekomponenten PU

UPPER RAW MATERIAL

- BLACK FULL GRAIN LEATHER
- (PT) Pele de Flor Integral Preta
- (ES) Cuero Full Grain Negro
- (FR) Cuir Pleine Fleur Grainé Noir
- (DE) Schwarz Glattleder
- (NL) Zwart Volnerfleer

LINING MATERIAL

- GREY AERPLUS TEXTILE
- (PT) Têxtil Aerplus Cinza
- (ES) Textil Aerplus Gris
- (FR) Textile Aerplus Gris
- (DE) Grau Aerplus Textil
- (NL) Textiel Aerplus Grijs



[VADER XXL]

EN ISO 20345:2022 CE S3 SRA
EU 49-53_UK 14-17_MP 322 - 352



1111.30



PROTECTIVE MIDSOLE

- KEVLAR
- (PT) Kevlar
- (ES) Kevlar
- (FR) Kevlar
- (DE) Kevlar
- (NL) Kevlar

PROTECTIVE TOE CAP

- COMPOSITE
- (PT) Composite
- (ES) Composite
- (FR) Composite
- (DE) Kunststoffkappe
- (NL) Composiet

SOLE

- DOUBLE DENSITY PU
- (PT) Dupla Densidade PU
- (ES) Doble Densidade PU
- (FR) Double Densité PU
- (DE) Zweikomponenten PU
- (NL) Tweekomponenten PU

UPPER RAW MATERIAL

- VEGAN MICROFIBER
- (PT) Microfibra Vegan
- (ES) Microfibra Vegan
- (FR) Microfibre Vegan
- (DE) Mikrofaser Vegan
- (NL) Microvezel Vegan

LINING MATERIAL

- GREY DRYLEX TEXTILE
- (PT) Têxtil Drylex Cinza
- (ES) Textil Drylex Gris
- (FR) Textile Drylex Gris
- (DE) Grau Drylex textil
- (NL) Textiel Drylex Grijs



1004.30



PROTECTIVE MIDSOLE

- KEVLAR
- (PT) Kevlar
- (ES) Kevlar
- (FR) Kevlar
- (DE) Kevlar
- (NL) Kevlar

PROTECTIVE TOE CAP

- COMPOSITE
- (PT) Composite
- (ES) Composite
- (FR) Composite
- (DE) Kunststoffkappe
- (NL) Composiet

SOLE

- DOUBLE DENSITY PU
- (PT) Dupla Densidade PU
- (ES) Doble Densidade PU
- (FR) Double Densité PU
- (DE) Zweikomponenten PU
- (NL) Tweekomponenten PU

UPPER RAW MATERIAL

- BLACK FULL GRAIN LEATHER
- (PT) Pele de Flor Integral Preta
- (ES) Cuero Full Grain Negro
- (FR) Cuir Pleine Fleur Grainé Noir
- (DE) Schwarz Glattleder
- (NL) Zwart Volnerfleer

LINING MATERIAL

- GREY AERPLUS TEXTILE
- (PT) Têxtil Aerplus Cinza
- (ES) Textil Aerplus Gris
- (FR) Textile Aerplus Gris
- (DE) Grau Aerplus Textil
- (NL) Textiel Aerplus Grijs



LIKE CAR TIRES, THE SOLE IS YOUR VITAL AND CONSTANT CONTACT WITH THE GROUND.

FOR THIS REASON, THIS RANGE IS MADE WITH PU/RUBBER



NEW PRODUCT

1255.00

PROTECTIVE MIDSOLE

KEVLAR
(PT) Kevlar
(ES) Kevlar
(FR) Kevlar
(DE) Kevlar
(NL) Kevlar

PROTECTIVE TOE CAP

COMPOSITE
(PT) Composite
(ES) Composite
(FR) Composite
(DE) Kunststoffkappe
(NL) Composiet

SOLE

DIRECT INJECTED PU + RUBBER
(PT) PU Diretamente Injetado + Borracha
(ES) PU inyectado directo + Caucho
(FR) PU Injecté Directement + Nitril
(DE) Direkt Eingespritztes PU + Gummi
(NL) Direct geïnjecteerd PU + Rubber

UPPER RAW MATERIAL

NUBUCK LEATHER + TEXTILE
(PT) Pele Nubuck + Têxtil
(ES) Cuero Nobuck + textil
(FR) Cuir Nubuck + textile
(DE) Nubukleder + Textil
(NL) Nubuckleer + textiel

LINNING MATERIAL

BREATHABLE TEXTILE
(PT) Têxtil respirável
(ES) Textil respirable
(FR) Textile respirant
(DE) Atmungsaktiv textil
(NL) Ademend textiel

EN ISO 20345:2011 CE S3 HRO SRC
EU 35-48_UK 2 1/2-13_MP 217 - 315



NEW PRODUCT

1055.00

PROTECTIVE MIDSOLE

KEVLAR
(PT) Kevlar
(ES) Kevlar
(FR) Kevlar
(DE) Kevlar
(NL) Kevlar

PROTECTIVE TOE CAP

COMPOSITE
(PT) Composite
(ES) Composite
(FR) Composite
(DE) Kunststoffkappe
(NL) Composiet

SOLE

DIRECT INJECTED PU + RUBBER
(PT) PU Diretamente Injetado + Borracha
(ES) PU inyectado directo + Caucho
(FR) PU Injecté Directement + Nitril
(DE) Direkt Eingespritztes PU + Gummi
(NL) Direct geïnjecteerd PU + Rubber

UPPER RAW MATERIAL

NUBUCK LEATHER + TEXTILE
(PT) Pele Nubuck + Têxtil
(ES) Cuero Nobuck + textil
(FR) Cuir Nubuck + textile
(DE) Nubukleder + Textil
(NL) Nubuckleer + textiel

LINNING MATERIAL

BREATHABLE TEXTILE
(PT) Têxtil respirável
(ES) Textil respirable
(FR) Textile respirant
(DE) Atmungsaktiv textil
(NL) Ademend textiel

EN ISO 20345:2011 CE S3 HRO SRC
EU 35-48_UK 2 1/2-13_MP 217 - 315



NEW
PRODUCT

1255.06

[E04]

EN ISO 20345:2011 CE S3 HRO SRC
EU 35-48_UK 2 1/2-13_MP 217 - 315



PROTECTIVE
MIDSOLE

KEVLAR
(PT) Kevlar
(ES) Kevlar
(FR) Kevlar
(DE) Kevlar
(NL) Kevlar

PROTECTIVE
TOE CAP

COMPOSITE
(PT) Composite
(ES) Composite
(FR) Composite
(DE) Kunststoffkappe
(NL) Composit

SOLE

**PU + RUBBER W/
30% RECYCLED + 15% CORK**
(PT) PU Diretamente Injetado + Borracha
(ES) PU injectado directo + Caucho
(FR) PU Injecté Directement + Nitril
(DE) Direkt Eingespritztes PU + Gummi
(NL) Direct geïnjecteerd PU + Rubber

UPPER RAW
MATERIAL

**NUBUCK LEATHER
+ TEXTILE**
(PT) Pele Nubuck + Têxtil
(ES) Cuero Nobuck + textil
(FR) Cuir Nubuck + textile
(DE) Nubuckleer + Textil
(NL) Nubuckleer + textiel

LINING
MATERIAL

**BREATHABLE
TEXTILE**
(PT) Têxtil respirável
(ES) Textil respirable
(FR) Textile respirant
(DE) Atmungsaktiv textil
(NL) Ademend textiel

NEW
PRODUCT

1055.06

[E14]

EN ISO 20345:2011 CE S3 HRO SRC
EU 35-48_UK 2 1/2-13_MP 217 - 315



PROTECTIVE
MIDSOLE

KEVLAR
(PT) Kevlar
(ES) Kevlar
(FR) Kevlar
(DE) Kevlar
(NL) Kevlar

PROTECTIVE
TOE CAP

COMPOSITE
(PT) Composite
(ES) Composite
(FR) Composite
(DE) Kunststoffkappe
(NL) Composit

SOLE

**PU + RUBBER W/
30% RECYCLED + 15% CORK**
(PT) PU Diretamente Injetado + Borracha
(ES) PU injectado directo + Caucho
(FR) PU Injecté Directement + Nitril
(DE) Direkt Eingespritztes PU + Gummi
(NL) Direct geïnjecteerd PU + Rubber

UPPER RAW
MATERIAL

**NUBUCK LEATHER
+ TEXTILE**
(PT) Pele Nubuck + Têxtil
(ES) Cuero Nobuck + textil
(FR) Cuir Nubuck + textile
(DE) Nubuckleer + Textil
(NL) Nubuckleer + textiel

LINING
MATERIAL

**BREATHABLE
TEXTILE**
(PT) Têxtil respirável
(ES) Textil respirable
(FR) Textile respirant
(DE) Atmungsaktiv textil
(NL) Ademend textiel



NEW
PRODUCT

1038.00

[E26]

EN ISO 20345:2011 CE S3 HRO SRC
EU 39-48_UK 6-13_MP 247 - 315



PROTECTIVE
MIDSOLE

KEVLAR
(PT) Kevlar
(ES) Kevlar
(FR) Kevlar
(DE) Kevlar
(NL) Kevlar

PROTECTIVE
TOE CAP

STEEL
(PT) Aço
(ES) Acero
(FR) Acier
(DE) Stahlkappe
(NL) Staal

SOLE

**DIRECT INJECTED
PU + RUBBER**
(PT) PU Diretamente Injetado + Borracha
(ES) PU inyectado directo + Caucho
(FR) PU Injecté Directement + Nitril
(DE) Direkt Eingespritztes PU + Gummi
(NL) Direct geïnjecteerd PU + Rubber

UPPER RAW
MATERIAL

**TEXTILE + WR
HI-TECH MFG**
(PT) Têxtil + Tecnologia MFG
(ES) Textil + Tecnología MFG
(FR) Textile + Technologie MFG
(DE) Textil + MFG Technologie
(NL) Textiel + MFG technologie

LINNING
MATERIAL

**BREATHABLE
TEXTILE**
(PT) Têxtil respirável
(ES) Textil respirable
(FR) Textile respirant
(DE) Atmungsaktiv textil
(NL) Ademend textiel

[E02]

EN ISO 20345:2011 CE S3 HRO SRC
EU 35-48_UK 2 1/2-13_MP 217 - 315



1256.00

PROTECTIVE
MIDSOLE

KEVLAR
(PT) Kevlar
(ES) Kevlar
(FR) Kevlar
(DE) Kevlar
(NL) Kevlar

PROTECTIVE
TOE CAP

STEEL
(PT) Aço
(ES) Acero
(FR) Acier
(DE) Stahlkappe
(NL) Staal

SOLE

**DIRECT INJECTED
PU + RUBBER**
(PT) PU Diretamente Injetado + Borracha
(ES) PU inyectado directo + Caucho
(FR) PU Injecté Directement + Nitril
(DE) Direkt Eingespritztes PU + Gummi
(NL) Direct geïnjecteerd PU + Rubber

UPPER RAW
MATERIAL

**BLACK NUBUCK
LEATHER**
(PT) Pele Nubuck Preto
(ES) Cuero Nubuck Negro
(FR) Cuir Nubuck Noir
(DE) Schwarz Nubuck Leder
(NL) Zwart Nubuckleer

LINNING
MATERIAL

**BLACK PACIFIC
TEXTILE**
(PT) Têxtil Pacific preto
(ES) Textil Pacific negro
(FR) Textile Pacific noir
(DE) Schwarz Pacific textil
(NL) Textiel Pacific zwart



1084.30

[E10 BLACK]

EN ISO 20345:2011 CE S3 HRO SRC
EU 35-48_UK 2 1/2-13_MP 217 - 315



PROTECTIVE
MIDSOLE

KEVLAR
(PT) Kevlar
(ES) Kevlar
(FR) Kevlar
(DE) Kevlar
(NL) Kevlar

PROTECTIVE
TOE CAP

STEEL
(PT) Aço
(ES) Acero
(FR) Acier
(DE) Stahlkappe
(NL) Staal

SOLE

**DIRECT INJECTED
PU + RUBBER**
(PT) PU Diretamente Injetado + Borracha
(ES) PU inyectado directo + Caucho
(FR) PU Injecté Directement + Nitril
(DE) Direkt Eingespritztes PU + Gummi
(NL) Direct geïnjecteerd PU + Rubber

UPPER RAW
MATERIAL

**BLACK NUBUCK
LEATHER**
(PT) Pele Nubuck Preto
(ES) Cuero Nubuck Negro
(FR) Cuir Nubuck Noir
(DE) Schwarz Nubuck Leder
(NL) Zwart Nubuckleer

LINNING
MATERIAL

**BLACK PACIFIC
TEXTILE**
(PT) Têxtil Pacific preto
(ES) Textil Pacific negro
(FR) Textile Pacific noir
(DE) Schwarz Pacific textil
(NL) Textiel Pacific zwart

[E16 HONEY]

EN ISO 20345:2011 CE S3 HRO SRC
EU 35-48_UK 2 1/2-13_MP 217 - 315



1084.36



PROTECTIVE MIDSOLE

KEVLAR
(PT) Kevlar
(ES) Kevlar
(FR) Kevlar
(DE) Kevlar
(NL) Kevlar

PROTECTIVE TOE CAP

STEEL
(PT) Aço
(ES) Acero
(FR) Acier
(DE) Stahlkappe
(NL) Staal

SOLE

DIRECT INJECTED PU + RUBBER
(PT) PU Diretamente Injetado + Borracha
(ES) PU inyectado directo + Caucho
(FR) PU Injecté Directement + Nitril
(DE) Direkt Eingespritztes PU + Gummi
(NL) Direct geïnjecteerd PU + Rubber

UPPER RAW MATERIAL

BEIGE NUBUCK LEATHER
(PT) Pele Nubuck Bege
(ES) Cuero Nobuck Beige
(FR) Cuir Nubuck Beige
(DE) Beige Nubuck Leder
(NL) Beige Nubuckleer

LINING MATERIAL

BLACK PACIFIC TEXTILE
(PT) Têxtil Pacific preto
(ES) Textil Pacific negro
(FR) Textile Pacific noir
(DE) Schwarz Pacific textil
(NL) Textiel Pacific zwart

[E18 BLUE]

EN ISO 20345:2011 CE S3 HRO SRC
EU 35-48_UK 2 1/2-13_MP 217 - 315



1084.21



PROTECTIVE MIDSOLE

KEVLAR
(PT) Kevlar
(ES) Kevlar
(FR) Kevlar
(DE) Kevlar
(NL) Kevlar

PROTECTIVE TOE CAP

STEEL
(PT) Aço
(ES) Acero
(FR) Acier
(DE) Stahlkappe
(NL) Staal

SOLE

DIRECT INJECTED PU + RUBBER
(PT) PU Diretamente Injetado + Borracha
(ES) PU inyectado directo + Caucho
(FR) PU Injecté Directement + Nitril
(DE) Direkt Eingespritztes PU + Gummi
(NL) Direct geïnjecteerd PU + Rubber

UPPER RAW MATERIAL

BLUE NUBUCK LEATHER
(PT) Pele Nubuck Azul
(ES) Cuero Nobuck Azul
(FR) Cuir Nubuck Bleu
(DE) Blau Nubuck Leder
(NL) Blauw Nubuckleer

LINING MATERIAL

BLACK PACIFIC TEXTILE
(PT) Têxtil Pacific preto
(ES) Textil Pacific negro
(FR) Textile Pacific noir
(DE) Schwarz Pacific textil
(NL) Textiel Pacific zwart

[E17 BROWN]

EN ISO 20345:2011 CE S3 HRO SRC
EU 35-48_UK 2 1/2-13_MP 217 - 315



1084.22



PROTECTIVE MIDSOLE

KEVLAR
(PT) Kevlar
(ES) Kevlar
(FR) Kevlar
(DE) Kevlar
(NL) Kevlar

PROTECTIVE TOE CAP

STEEL
(PT) Aço
(ES) Acero
(FR) Acier
(DE) Stahlkappe
(NL) Staal

SOLE

DIRECT INJECTED PU + RUBBER
(PT) PU Diretamente Injetado + Borracha
(ES) PU inyectado directo + Caucho
(FR) PU Injecté Directement + Nitril
(DE) Direkt Eingespritztes PU + Gummi
(NL) Direct geïnjecteerd PU + Rubber

UPPER RAW MATERIAL

BROWN NUBUCK LEATHER
(PT) Pele Nubuck Castanho
(ES) Cuero Nobuck Marrón
(FR) Cuir Nubuck Marron
(DE) Braun Nubuck Leder
(NL) Bruin Nubuckleer

LINING MATERIAL

BLACK PACIFIC TEXTILE
(PT) Têxtil Pacific preto
(ES) Textil Pacific negro
(FR) Textile Pacific noir
(DE) Schwarz Pacific textil
(NL) Textiel Pacific zwart

[E22]

EN ISO 20345:2011 CE S3 HRO SRC
EU 39-48_UK 6-13_MP 247 - 315



1058.00



PROTECTIVE MIDSOLE

KEVLAR
(PT) Kevlar
(ES) Kevlar
(FR) Kevlar
(DE) Kevlar
(NL) Kevlar

PROTECTIVE TOE CAP

STEEL
(PT) Aço
(ES) Acero
(FR) Acier
(DE) Stahlkappe
(NL) Staal

SOLE

DIRECT INJECTED PU + RUBBER
(PT) PU Diretamente Injetado + Borracha
(ES) PU inyectado directo + Caucho
(FR) PU Injecté Directement + Nitril
(DE) Direkt Eingespritztes PU + Gummi
(NL) Direct geïnjecteerd PU + Rubber

UPPER RAW MATERIAL

BLACK NUBUCK LEATHER
(PT) Pele Nubuck Preto
(ES) Cuero Nobuck Negro
(FR) Cuir Nubuck Noir
(DE) Schwarz Nubuck Leder
(NL) Zwart Nubuckleer

LINING MATERIAL

BLACK PACIFIC TEXTILE
(PT) Têxtil Pacific preto
(ES) Textil Pacific negro
(FR) Textile Pacific noir
(DE) Schwarz Pacific textil
(NL) Textiel Pacific zwart

1084.42



[E82]

EN ISO 20345:2011 CE S3 HRO SRC
EU 35-48_UK 2 1/2-13_MP 217 - 315



PROTECTIVE MIDSOLE

KEVLAR
(PT) Kevlar
(ES) Kevlar
(FR) Kevlar
(DE) Kevlar
(NL) Kevlar

PROTECTIVE TOE CAP

STEEL
(PT) Aço
(ES) Acero
(FR) Acier
(DE) Stahlkappe
(NL) Staal

SOLE

DIRECT INJECTED PU + RUBBER
(PT) PU Diretamente Injetado + Borracha
(ES) PU inyectado directo + Caucho
(FR) PU Injecté Directement + Nitril
(DE) Direkt Eingespritztes PU + Gummi
(NL) Direct geïnjecteerd PU + Rubber

UPPER RAW MATERIAL

WR FLOATER COGNAC
(PT) WR Floater Cognac
(ES) Coñac Floater WR
(FR) Cuir Pleine Fleur WR Cognac
(DE) WR Floater Cognac
(NL) WR Floater Cognac

LINNING MATERIAL

BLACK PACIFIC TEXTILE
(PT) Têxtil Pacific preto
(ES) Textil Pacific negro
(FR) Textile Pacific noir
(DE) Schwarz Pacific textil
(NL) Textiel Pacific zwart



1684.42



[E802]

EN ISO 20345:2011 CE S3 HRO SRC WR
EU 35-48_UK 2 1/2-13_MP 217 - 315



PROTECTIVE MIDSOLE

KEVLAR
(PT) Kevlar
(ES) Kevlar
(FR) Kevlar
(DE) Kevlar
(NL) Kevlar

PROTECTIVE TOE CAP

STEEL
(PT) Aço
(ES) Acero
(FR) Acier
(DE) Stahlkappe
(NL) Staal

SOLE

DIRECT INJECTED PU + RUBBER
(PT) PU Diretamente Injetado + Borracha
(ES) PU inyectado directo + Caucho
(FR) PU Injecté Directement + Nitril
(DE) Direkt Eingespritztes PU + Gummi
(NL) Direct geïnjecteerd PU + Rubber

UPPER RAW MATERIAL

WR FLOATER COGNAC
(PT) WR Floater Cognac
(ES) Coñac Floater WR
(FR) Cuir Pleine Fleur WR Cognac
(DE) WR Floater Cognac
(NL) WR Floater Cognac

LINNING MATERIAL

FUR + AQUATEX MEMBRANE
(PT) Forro de Pêlo + Membrana Aquatex
(ES) Forro de Piel+ Membrana Aquatex
(FR) Doublure En Fourrure + Membrane Aquatex
(DE) Pelzfutter + Aquatex Membrane
(NL) Bontvoering + Aquatex Membraan





[HYBRID BLUE]
EN ISO 20345:2011 CE S3 SRC
EU 35-48_UK 2 1/2-13_MP 217 - 315

1263.11



- PROTECTIVE MIDSOLE**

KEVLAR
(PT) Kevlar
(ES) Kevlar
(FR) Kevlar
(DE) Kevlar
(NL) Kevlar
- PROTECTIVE TOE CAP**

COMPOSITE
(PT) Composite
(ES) Composite
(FR) Composite
(DE) Kunststoffkappe
(NL) Composiet
- SOLE**

DIRECT INJECTED PU + TPU
(PT) PU Diretamente Injetado + TPU
(ES) PU Inyectado directo + TPU
(FR) PU Injecté Directement + TPU
(DE) Direkt Eingespritztes PU + TPU
(NL) Direct geïnjecteerd PU + TPU
- UPPER RAW MATERIAL**

BLACK LASER HD WR TEXTILE
(PT) Têxtil Laser HD WR
(ES) Textil Negro Laser HD WR
(FR) Textile Laser Noir HD WR
(DE) Schwarz Laser HD WR Textil
(NL) Zwart Laser HD WR Textiel
- LINNING MATERIAL**

BLACK CAMBRELLE TEXTILE
(PT) Têxtil Cambrelle preto
(ES) Textil Cambrelle negro
(FR) Textile Cambrelle noir
(DE) Schwarz Cambrelle Textil
(NL) Textiel Cambrelle zwart

- ESD
- CLIMA CORK SYSTEM
- WATER REPELLENT UPPER
- LIGHTWEIGHT
- METAL FREE
- ANTI-SLIP SOLE

[HYBRID RED]

EN ISO 20345:2011 CE S3 SRC
EU 35-48_UK 2 1/2-13_MP 217 - 315



1263.14

PROTECTIVE MIDSOLE

KEVLAR
(PT) Kevlar
(ES) Kevlar
(FR) Kevlar
(DE) Kevlar
(NL) Kevlar

PROTECTIVE TOE CAP

COMPOSITE
(PT) Composite
(ES) Composite
(FR) Composite
(DE) Kunststoffkappe
(NL) Composiet

SOLE

DIRECT INJECTED PU + TPU
(PT) PU Diretamente Injetado + TPU
(ES) PU inyectado directo + TPU
(FR) PU Injecté Directement + TPU
(DE) Direkt Eingespritztes PU + TPU
(NL) Direct geïnjecteerd PU + TPU

UPPER RAW MATERIAL

BLACK LASER HD WR TEXTILE
(PT) Têxtil Laser HD WR
(ES) Textil Negro Laser HD WR
(FR) Textile Laser Noir HD WR
(DE) Schwarz Laser HD WR Textil
(NL) Zwart Laser HD WR Textiel

LINING MATERIAL

BLACK CAMBRELLE TEXTILE
(PT) Têxtil Cambrelle preto
(ES) Textil Cambrelle negro
(FR) Textile Cambrelle noir
(DE) Schwarz Cambrelle Textil
(NL) Textiel Cambrelle zwart

1250.00

PROTECTIVE MIDSOLE

KEVLAR
(PT) Kevlar
(ES) Kevlar
(FR) Kevlar
(DE) Kevlar
(NL) Kevlar

PROTECTIVE TOE CAP

COMPOSITE
(PT) Composite
(ES) Composite
(FR) Composite
(DE) Kunststoffkappe
(NL) Composiet

SOLE

DIRECT INJECTED PU + TPU
(PT) PU Diretamente Injetado + TPU
(ES) PU inyectado directo + TPU
(FR) PU Injecté Directement + TPU
(DE) Direkt Eingespritztes PU + TPU
(NL) Direct geïnjecteerd PU + TPU

UPPER RAW MATERIAL

BLACK LEATHER + GREY TEXTILE
(PT) Pele Preta + Têxtil Cinza
(ES) Piel Negra + Textil Gris
(FR) Cuir Noir + Textile Gris
(DE) Schwarz Leder + Grau Textil
(NL) Zwart Leer + Grijs Textiel

LINING MATERIAL

BLACK CAMBRELLE TEXTILE
(PT) Têxtil Cambrelle preto
(ES) Textil Cambrelle negro
(FR) Textile Cambrelle noir
(DE) Schwarz Cambrelle Textil
(NL) Textiel Cambrelle zwart



[TIDAL]

EN ISO 20345:2011 CE S3 SRC
EU 36-48_UK 3-13_MP 225 - 315

[SOLAR]

EN ISO 20345:2011 CE S1P SRC
EU 36-48_UK 3-13_MP 225 - 315



1250.01

PROTECTIVE MIDSOLE

KEVLAR
(PT) Kevlar
(ES) Kevlar
(FR) Kevlar
(DE) Kevlar
(NL) Kevlar

PROTECTIVE TOE CAP

COMPOSITE
(PT) Composite
(ES) Composite
(FR) Composite
(DE) Kunststoffkappe
(NL) Composiet

SOLE

DIRECT INJECTED PU + TPU
(PT) PU Diretamente Injetado + TPU
(ES) PU inyectado directo + TPU
(FR) PU Injecté Directement + TPU
(DE) Direkt Eingespritztes PU + TPU
(NL) Direct geïnjecteerd PU + TPU

UPPER RAW MATERIAL

BLUE SUEDE LEATHER
(PT) Couro Acamuçado Azul
(ES) Cuero de Gamuza Azul
(FR) Croute Velours Bleu
(DE) Blau Suede Leder
(NL) Suede Leer Blauw

LINING MATERIAL

BLACK CAMBRELLE TEXTILE
(PT) Têxtil Cambrelle preto
(ES) Textil Cambrelle negro
(FR) Textile Cambrelle noir
(DE) Schwarz Cambrelle Textil
(NL) Textiel Cambrelle zwart

1050.00

PROTECTIVE MIDSOLE

KEVLAR
(PT) Kevlar
(ES) Kevlar
(FR) Kevlar
(DE) Kevlar
(NL) Kevlar

PROTECTIVE TOE CAP

COMPOSITE
(PT) Composite
(ES) Composite
(FR) Composite
(DE) Kunststoffkappe
(NL) Composiet

SOLE

DIRECT INJECTED PU + TPU
(PT) PU Diretamente Injetado + TPU
(ES) PU inyectado directo + TPU
(FR) PU Injecté Directement + TPU
(DE) Direkt Eingespritztes PU + TPU
(NL) Direct geïnjecteerd PU + TPU

UPPER RAW MATERIAL

BLACK LEATHER + GREY TEXTILE
(PT) Pele Preta + Têxtil Cinza
(ES) Piel Negra + Textil Gris
(FR) Cuir Noir + Textile Gris
(DE) Schwarz Leder + Grau Textil
(NL) Zwart Leer + Grijs Textiel

LINING MATERIAL

BLACK CAMBRELLE TEXTILE
(PT) Têxtil Cambrelle preto
(ES) Textil Cambrelle negro
(FR) Textile Cambrelle noir
(DE) Schwarz Cambrelle Textil
(NL) Textiel Cambrelle zwart



[BIOMASS]

EN ISO 20345:2011 CE S3 SRC
EU 36-48_UK 3-13_MP 225 - 315

DESIGNED FOR MULTIDIRECTIONAL FLOORS, GIVING A PERFECT TRACTION WITH COMFORT TO YOUR FEET

TECHNICAL CONTRIBUTION OF
SPODOS
FOOT SCIENCE CENTER



1237.00

EN ISO 20345:2022 CE S3L HICI FOSR
EU 36-48_UK 3-13_MP 225 - 315



PROTECTIVE MIDSOLE

KEVLAR
(PT) Kevlar
(ES) Kevlar
(FR) Kevlar
(DE) Kevlar
(NL) Kevlar

PROTECTIVE TOE CAP

STEEL
(PT) Aço
(ES) Acero
(FR) Acier
(DE) Stahlkappe
(NL) Staal

SOLE

DOUBLE DENSITY PU
(PT) Dupla Densidade PU
(ES) Doble Densidade PU
(FR) Double Densité PU
(DE) Zweikomponenten PU
(NL) Tweekomponenten PU

UPPER RAW MATERIAL

MATRIX KEVLAR + ANILINE LEATHER
(PT) Matrix Kevlar + Pele Anilina Preta
(ES) Matrix Kevlar + Cuero Anilina Negro
(FR) Matrix Kevlar + Cuir Aniline Noir
(DE) Schwarz Matrix Kevlar + Aniline Leder
(NL) Matrix Kevlar + Glad Leer Anilina Zwart

LINNING MATERIAL

BLACK PACIFIC TEXTILE
(PT) Têxtil Pacifico Preto
(ES) Textil Pacific Negro
(FR) Textile Pacific Noir
(DE) Schwarz Pacific Textile
(NL) Zwart Pacific Textiel

EN ISO 20345:2022 CE S3L HICI FOSR
EU 36-47_UK 3-12_MP 225 - 307



1238.02



PROTECTIVE MIDSOLE

KEVLAR
(PT) Kevlar
(ES) Kevlar
(FR) Kevlar
(DE) Kevlar
(NL) Kevlar

PROTECTIVE TOE CAP

STEEL
(PT) Aço
(ES) Acero
(FR) Acier
(DE) Stahlkappe
(NL) Staal

SOLE

DOUBLE DENSITY PU
(PT) Dupla Densidade PU
(ES) Doble Densidade PU
(FR) Double Densité PU
(DE) Zweikomponenten PU
(NL) Tweekomponenten PU

UPPER RAW MATERIAL

BROWN NUBUCK LEATHER
(PT) Pele Nubuck Castanho
(ES) Cuero Nubuck Marrón
(FR) Cuir Nubuck Marron
(DE) Braun Nubuck Leder
(NL) Bruin Nubuckleer

LINNING MATERIAL

ANILINE LEATHER
(PT) Pele Anilina
(ES) Cuero Anilina
(FR) Cuir Aniline
(DE) Aniline Leder
(NL) Aniline Leer





EASY CLEANING DEEP
PROFILED SOLE

EXTRA PU PROTECTION
ALL AROUND THE BOOT

1011.00



**PROTECTIVE
MIDSOLE**

STEEL
(PT) Aço
(ES) Acero
(FR) Acier
(DE) Stahlkappe
(NL) Staal

**PROTECTIVE
TOE CAP**

STEEL
(PT) Aço
(ES) Acero
(FR) Acier
(DE) Stahlkappe
(NL) Staal

SOLE

**DIRECT INJECTED
PU**
(PT) PU Diretamente Injetado
(ES) PU inyectado directo
(FR) PU Injecté Directement
(DE) Direkt Eingespritztes PU
(NL) Direct geïnjecteerd PU

**UPPER RAW
MATERIAL**

**BLACK FULL
GRAIN LEATHER**
(PT) Pele de Flor Integral Preta
(ES) Cuero Full Grain Negro
(FR) Cuir Pleine Fleur Grainé Noir
(DE) Schwarz Glattleder
(NL) Zwart Volnerfleer

**LINNING
MATERIAL**

**AQUATEX WATER-
PROOF MEMBRANE**
(PT) Membrana Impermeável Aquatex
(ES) Membrana Impermeable Aquatex
(FR) Membrane Impermeable Aquatex
(DE) Aquatex Wasserdichte Membrane
(NL) Aquatex Waterdicht Membraan



[EXPLORATION HIGH]

EN ISO 20345:2011 CE S3 SRC
EU 39-48_UK 6-13_MP 247 - 315



1611.00



**PROTECTIVE
MIDSOLE**

STEEL
(PT) Aço
(ES) Acero
(FR) Acier
(DE) Stahlkappe
(NL) Staal

**PROTECTIVE
TOE CAP**

STEEL
(PT) Aço
(ES) Acero
(FR) Acier
(DE) Stahlkappe
(NL) Staal

SOLE

**DIRECT INJECTED
PU**
(PT) PU Diretamente Injetado
(ES) PU inyectado directo
(FR) PU Injecté Directement
(DE) Direkt Eingespritztes PU
(NL) Direct geïnjecteerd PU

**UPPER RAW
MATERIAL**

**BLACK FULL
GRAIN LEATHER**
(PT) Pele de Flor Integral Preta
(ES) Cuero Full Grain Negro
(FR) Cuir Pleine Fleur Grainé Noir
(DE) Schwarz Glattleder
(NL) Zwart Volnerfleer

**LINNING
MATERIAL**

**AQUATEX WATER-
PROOF MEMBRANE**
(PT) Membrana Impermeável Aquatex
(ES) Membrana Impermeable Aquatex
(FR) Membrane Impermeable Aquatex
(DE) Aquatex Wasserdichte Membrane
(NL) Aquatex Waterdicht Membraan





EN ISO 17249:2013 / AC:2014 CLASS 2
EN ISO 20345:2011 CE S3 HI CI HRO SRC
EU 39-48_UK 6-13_MP 247-315



1671.02



PROTECTIVE MIDSOLE

STEEL
(PT) Aço
(ES) Acero
(FR) Acier
(DE) Stahlkappe
(NL) Staal

PROTECTIVE TOE CAP

STEEL
(PT) Aço
(ES) Acero
(FR) Acier
(DE) Stahlkappe
(NL) Staal

SOLE

DIRECT INJECTED PU + RUBBER
(PT) PU Diretamente Injetado + Borracha
(ES) PU inyectado directo + Caucho
(FR) PU Injecté Directement + Nitril
(DE) Direkt Eingespritztes PU + Gummi
(NL) Direct geïnjecteerd PU + Rubber

UPPER RAW MATERIAL

BROWN CRAZY HORSE LEATHER
(PT) Pele Crazy Horse Castanha
(ES) Cuero Crazy Horse Marrón
(FR) Cuir Crazy Horse Marron
(DE) Braun Crazy Horse Leder
(NL) Bruin Crazy Horse Leer

LINNING MATERIAL

SYMPATEX WATER-PROOF MEMBRANE
(PT) Membrana Impermeável Sympatex
(ES) Membrana Impermeable Sympatex
(FR) Membrane Impermeable Sympatex
(DE) Sympatex Wasserdichte Membrane
(NL) Sympatex Waterdicht Membran

EN ISO 20345:2011 CE S3 CI HI WR HRO SRC WR
EU 39-47_UK 6-12_MP 247-307



1632.02

320 mm



PROTECTIVE MIDSOLE

STEEL
(PT) Aço
(ES) Acero
(FR) Acier
(DE) Stahlkappe
(NL) Staal

PROTECTIVE TOE CAP

STEEL
(PT) Aço
(ES) Acero
(FR) Acier
(DE) Stahlkappe
(NL) Staal

SOLE

DIRECT INJECTED PU + VIBRAM
(PT) PU Diretamente Injetado + Vibram
(ES) PU inyectado directo + Vibram
(FR) PU Injecté Directement + Vibram
(DE) Direkt Eingespritztes PU + Vibram
(NL) Direct geïnjecteerd PU + Vibram

UPPER RAW MATERIAL

BROWN CRAZY HORSE LEATHER
(PT) Pele Crazy Horse Castanha
(ES) Cuero Crazy Horse Marrón
(FR) Cuir Crazy Horse Marron
(DE) Braun Crazy Horse Leder
(NL) Bruin Crazy Horse Leer

LINNING MATERIAL

SYMPATEX WATER-PROOF MEMBRANE
(PT) Membrana Impermeável Sympatex
(ES) Membrana Impermeable Sympatex
(FR) Membrane Impermeable Sympatex
(DE) Sympatex Wasserdichte Membrane
(NL) Sympatex Waterdicht Membran

[DAINTREE 2.1]

EN ISO 17249:2013 / AC:2014 CLASS 1
EN ISO 20345:2011 CE S3 HRO SRC
EU 39-48_UK 6-13_MP 247-315



1053.90



PROTECTIVE MIDSOLE

STEEL
(PT) Aço
(ES) Acero
(FR) Acier
(DE) Stahlkappe
(NL) Staal

PROTECTIVE TOE CAP

STEEL
(PT) Aço
(ES) Acero
(FR) Acier
(DE) Stahlkappe
(NL) Staal

SOLE

DOUBLE DENSITY PU + RUBBER
(PT) Dupla Densidade PU
(ES) Doble Densidade PU
(FR) Double Densité PU
(DE) Zweikomponenten PU
(NL) Tweekomponenten PU

UPPER RAW MATERIAL

BLACK NUBUCK LEATHER
(PT) Pele Nubuck Preto
(ES) Cuero Nubuck Negro
(FR) Cuir Nubuck Noir
(DE) Schwarz Nubuck Leder
(NL) Zwart Nubuckleer

LINING MATERIAL

BLACK CAMBRELLE TEXTILE
(PT) Têxtil Cambrelle preto
(ES) Textil Cambrelle negro
(FR) Textile Cambrelle noir
(DE) Schwarz Cambrelle Textil
(NL) Textiel Cambrelle zwart

[X6]

EN ISO 20345:2011 CE S3 SRC
EU 36-47_UK 3-12_MP 225-307



1065.52



PROTECTIVE MIDSOLE

STEEL
(PT) Aço
(ES) Acero
(FR) Acier
(DE) Stahlkappe
(NL) Staal

PROTECTIVE TOE CAP

STEEL
(PT) Aço
(ES) Acero
(FR) Acier
(DE) Stahlkappe
(NL) Staal

SOLE

DOUBLE DENSITY PU
(PT) Dupla Densidade PU
(ES) Doble Densidade PU
(FR) Double Densité PU
(DE) Zweikomponenten PU
(NL) Tweekomponenten PU

UPPER RAW MATERIAL

BROWN NUBUCK LEATHER
(PT) Pele Nubuck Castanho
(ES) Cuero Nubuck Marrón
(FR) Cuir Nubuck Marron
(DE) Braun Nubuck Leder
(NL) Bruin Nubuckleer

LINING MATERIAL

PACIFIC TEXTILE
(PT) Têxtil Pacifico
(ES) Textil Pacific
(FR) Textile Pacific
(DE) Pacific Textiel
(NL) Pacific Textiel

[SHERWOOD]

EN ISO 17249:2013 / AC:2014 CLASS 3
EN ISO 20345:2022 CE S3 HRO SRA WR
EU 39-47_UK 6-12_MP 247-307



1053.60



PROTECTIVE MIDSOLE

STEEL
(PT) Aço
(ES) Acero
(FR) Acier
(DE) Stahlkappe
(NL) Staal

PROTECTIVE TOE CAP

STEEL
(PT) Aço
(ES) Acero
(FR) Acier
(DE) Stahlkappe
(NL) Staal

SOLE

DIRECT INJECTED PU + RUBBER
(PT) PU Diretamente Injetado + Borracha
(ES) PU inyectado directo + Caucho
(FR) PU Injecté Directement + Nitril
(DE) Direkt Eingespritztes PU + Gummi
(NL) Direct geïnjecteerd PU + Rubber

UPPER RAW MATERIAL

BLACK FULL GRAIN LEATHER
(PT) Pele de Flor Integral Preta
(ES) Cuero Full Grain Negro
(FR) Cuir Pleine Fleur Grainé Noir
(DE) Schwarz Glattleder
(NL) Zwart Volnerleer

LINING MATERIAL

SYMPATEX WATER-PROOF MEMBRANE
(PT) Membrana Impermeável Sympatex
(ES) Membrana Impermeable Sympatex
(FR) Membrane Impermeable Sympatex
(DE) Sympatex Wasserdichte Membrane
(NL) Sympatex Waterdicht Membran



[ICELANDIC]

EN ISO 20345:2011 CE S3 CI SRC
EU 36-50_UK 3-14 1/2_MP 225-330



2 SIDE ZIPS



1625.00

PROTECTIVE MIDSOLE

STEEL
(PT) Aço
(ES) Acero
(FR) Acier
(DE) Stahlkappe
(NL) Staal

PROTECTIVE TOE CAP

COMPOSITE
(PT) Composite
(ES) Composite
(FR) Composite
(DE) Kunststoffkappe
(NL) Composit

SOLE

DOUBLE DENSITY PU
(PT) Dupla Densidade PU
(ES) Doble Densidade PU
(FR) Double Densité PU
(DE) Zweikomponenten PU
(NL) Tweekomponenten PU

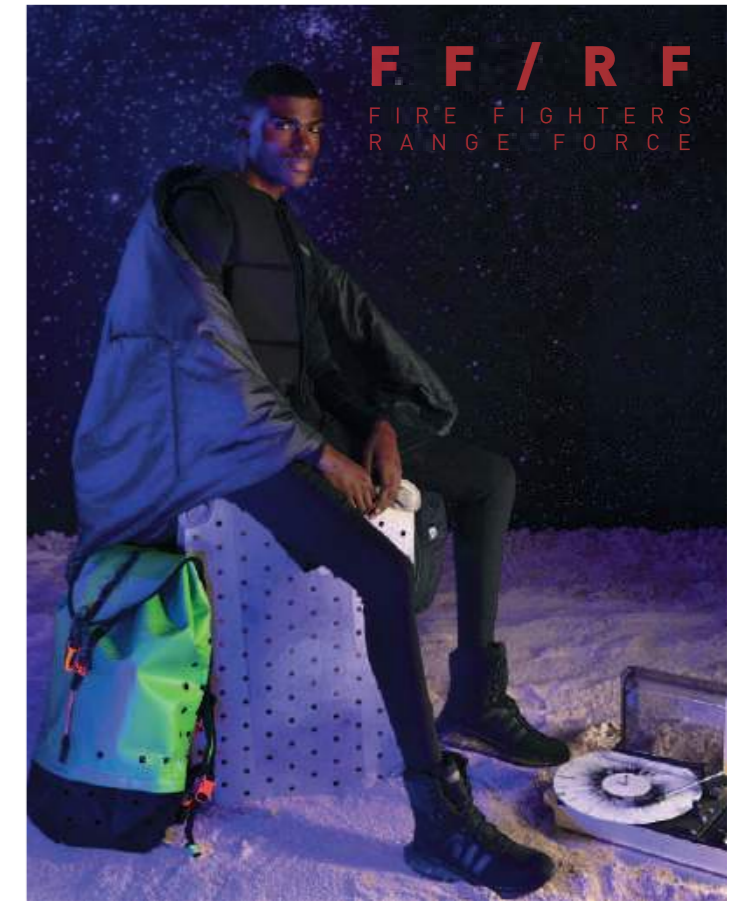
UPPER RAW MATERIAL

BLACK FULL GRAIN LEATHER
(PT) Pele de Flor Integral Preta
(ES) Cuero Full Grain Negro
(FR) Cuir Pleine Fleur Grainé Noir
(DE) Schwarz Glattleder
(NL) Zwart Volnerfleer

LINNING MATERIAL

NATURAL LAMBSKIN
(PT) Pele Natural de Carneiro
(ES) Piel de Cordero Natural
(FR) Peau de Mouton Naturelle
(DE) Natürliches Lamm Futter
(NL) Natuurlijk Lamsleer

2018.20



FF/RF
FIRE FIGHTERS
RANGE FORCE



[FÉNIX BLACK 2.1]

EN ISO 15090:2012 TIPO 2 HI3 F2A
EN ISO 20345:2011 CE S3 WR
HI CI AN M HRO SRC
EU 35-47_UK 2 1/2-12_MP 217 - 307



PROTECTIVE MIDSOLE

KEVLAR
(PT) Kevlar
(ES) Kevlar
(FR) Kevlar
(DE) Kevlar
(NL) Kevlar

PROTECTIVE TOE CAP

COMPOSITE
(PT) Composite
(ES) Composite
(FR) Composite
(DE) Kunststoffkappe
(NL) Composit

SOLE

DIRECT VULCANIZED FIRE-RETARDANT RUBBER
(PT) Borracha Ignífuga Diretamente Vulcanizada
(ES) Caucho ignífugo Vulcanizado Directo
(FR) Nitril Vulcanisé Directment
(DE) Vulkanisiertes Feuerhemmender Gummi
(NL) Direct Gevulkaniseerd Brandvertrgend Rubber

UPPER RAW MATERIAL

BLACK FULL GRAIN LEATHER
(PT) Pele de Flor Integral Preta
(ES) Cuero Full Grain Negro
(FR) Cuir Pleine Fleur Grainé Noir
(DE) Schwarz Glattleder
(NL) Zwart Volnerfleer

LINNING MATERIAL

SYMPATEX WATER-PROOF MEMBRANE
(PT) Membrana Impermeável Sympatex
(ES) Membrana Impermeable Sympatex
(FR) Membrane Impermeable Sympatex
(DE) Sympatex Wasserdichte Membrane
(NL) Sympatex Waterdicht Membraan

NEW
PRODUCT

2018.30

[FÉNIX 5.1 PRO]

EN ISO 20345:2011 CE S3 HI CI HRO
AN M SRC WR
EN ISO 15090:2012 CE TIPO 2 HI3 F2A
EN ISO 17249:2013/AC:2014 CLASSE 2
EU 36-48_UK 3-13_MP 225 - 315



ANKLE
PROTECTION



METATARSAL
PROTECTION



PROTECTIVE
MIDSOLE

KEVLAR
(PT) Kevlar
(ES) Kevlar
(FR) Kevlar
(DE) Kevlar
(NL) Kevlar

PROTECTIVE
TOE CAP

FIBERGLASS
(PT) Fibra de vidro
(ES) Fibra de Vidrio
(FR) Fibre de Verre
(DE) Glasfaser
(NL) Glasvezel

SOLE

**FIREFOX - VIBRAM
FIRE-RETARDANT RUBBER**
(PT) Borracha ignífuga - Vibram
(ES) Caucho ignífugo - Vibram
(FR) Nitril ignifuge - Vibram
(DE) Feuerhemmender Gummi - Vibram
(NL) Brandvertragend rubber - Vibram

UPPER RAW
MATERIAL

**BLACK FULL
GRAIN LEATHER**
(PT) Pele de Flor Integral Preta
(ES) Cuero Full Grain Negro
(FR) Cuir Pleine Fleur Grainé Noir
(DE) Schwarz Glattleder
(NL) Zwart Volnerfleer

LINING
MATERIAL

**SYMPATEX WATER-
PROOF MEMBRANE**
(PT) Membrana Impermeável Sympatex
(ES) Membrana Impermeable Sympatex
(FR) Membrane Impermeable Sympatex
(DE) Sympatex Wasserdichte Membrane
(NL) Sympatex Waterdicht Membran

NEW
PRODUCT

2019.00

[FLAME 5.1]

EN ISO 15090:2012 TIPO 2 HI3 F2A
EN ISO 20345:2011 CE AN CI WR HRO SRA
EU 36-48_UK 3-13_MP 225 - 315



ANKLE
PROTECTION



PROTECTIVE
MIDSOLE

KEVLAR
(PT) Kevlar
(ES) Kevlar
(FR) Kevlar
(DE) Kevlar
(NL) Kevlar

PROTECTIVE
TOE CAP

FIBERGLASS
(PT) Fibra de vidro
(ES) Fibra de Vidrio
(FR) Fibre de Verre
(DE) Glasfaser
(NL) Glasvezel

SOLE

**FIREFOX - VIBRAM
FIRE-RETARDANT RUBBER**
(PT) Borracha ignífuga - Vibram
(ES) Caucho ignífugo - Vibram
(FR) Nitril ignifuge - Vibram
(DE) Feuerhemmender Gummi - Vibram
(NL) Brandvertragend rubber - Vibram

UPPER RAW
MATERIAL

**BLACK FULL
GRAIN LEATHER**
(PT) Pele de Flor Integral Preta
(ES) Cuero Full Grain Negro
(FR) Cuir Pleine Fleur Grainé Noir
(DE) Schwarz Glattleder
(NL) Zwart Volnerfleer

LINING
MATERIAL

**SYMPATEX WATER-
PROOF MEMBRANE**
(PT) Membrana Impermeável Sympatex
(ES) Membrana Impermeable Sympatex
(FR) Membrane Impermeable Sympatex
(DE) Sympatex Wasserdichte Membrane
(NL) Sympatex Waterdicht Membran

NEW
PRODUCT

2018.40

[FÉNIX 5.1]

EN ISO 15090:2012 TIPO 2 HI3 F2A
EN ISO 20345:2011 CE AN CI WR HRO SRA
EU 36-48_UK 3-13_MP 225 - 315



ANKLE
PROTECTION



METATARSAL
PROTECTION



PROTECTIVE
MIDSOLE

KEVLAR
(PT) Kevlar
(ES) Kevlar
(FR) Kevlar
(DE) Kevlar
(NL) Kevlar

PROTECTIVE
TOE CAP

FIBERGLASS
(PT) Fibra de vidro
(ES) Fibra de Vidrio
(FR) Fibre de Verre
(DE) Glasfaser
(NL) Glasvezel

SOLE

**FIREFOX - VIBRAM
FIRE-RETARDANT RUBBER**
(PT) Borracha ignífuga - Vibram
(ES) Caucho ignífugo - Vibram
(FR) Nitril ignifuge - Vibram
(DE) Feuerhemmender Gummi - Vibram
(NL) Brandvertragend rubber - Vibram

UPPER RAW
MATERIAL

**BLACK FULL
GRAIN LEATHER**
(PT) Pele de Flor Integral Preta
(ES) Cuero Full Grain Negro
(FR) Cuir Pleine Fleur Grainé Noir
(DE) Schwarz Glattleder
(NL) Zwart Volnerfleer

LINING
MATERIAL

**SYMPATEX WATER-
PROOF MEMBRANE**
(PT) Membrana Impermeável Sympatex
(ES) Membrana Impermeable Sympatex
(FR) Membrane Impermeable Sympatex
(DE) Sympatex Wasserdichte Membrane
(NL) Sympatex Waterdicht Membran

NEW
PRODUCT

2019.00

[PATROL 5.1]

EN ISO 15090:2012 TIPO 2 HI3 F2A
EN ISO 20345:2011 CE AN CI WR HRO SRA
EU 36-48_UK 3-13_MP 225 - 315



PROTECTIVE
MIDSOLE

KEVLAR
(PT) Kevlar
(ES) Kevlar
(FR) Kevlar
(DE) Kevlar
(NL) Kevlar

PROTECTIVE
TOE CAP

FIBERGLASS
(PT) Fibra de vidro
(ES) Fibra de Vidrio
(FR) Fibre de Verre
(DE) Glasfaser
(NL) Glasvezel

SOLE

**FIREFOX - VIBRAM
FIRE-RETARDANT RUBBER**
(PT) Borracha ignífuga - Vibram
(ES) Caucho ignífugo - Vibram
(FR) Nitril ignifuge - Vibram
(DE) Feuerhemmender Gummi - Vibram
(NL) Brandvertragend rubber - Vibram

UPPER RAW
MATERIAL

**BLACK FULL
GRAIN LEATHER**
(PT) Pele de Flor Integral Preta
(ES) Cuero Full Grain Negro
(FR) Cuir Pleine Fleur Grainé Noir
(DE) Schwarz Glattleder
(NL) Zwart Volnerfleer

LINING
MATERIAL

**SYMPATEX WATER-
PROOF MEMBRANE**
(PT) Membrana Impermeável Sympatex
(ES) Membrana Impermeable Sympatex
(FR) Membrane Impermeable Sympatex
(DE) Sympatex Wasserdichte Membrane
(NL) Sympatex Waterdicht Membran

NEW
PRODUCT

1076.65

[PATROL 2.1]

EN ISO 20347: 2011 03 HRO SRC
EU 35-48_UK 2 1/2-13_MP 217 - 315



INTERNAL ZIPPER



PROTECTIVE
MIDSOLE

KEVLAR
(PT) Kevlar
(ES) Kevlar
(FR) Kevlar
(DE) Kevlar
(NL) Kevlar

PROTECTIVE
TOE CAP

-
(PT) -
(ES) -
(FR) -
(DE) -
(NL) -

SOLE

DIRECT INJECTED
PU + RUBBER
(PT) PU Diretamente Injetado + Borracha
(ES) PU inyectado directo + Caucho
(FR) PU Injecté Directement + Nitril
(DE) Direkt Eingespritztes PU + Gummi
(NL) Direct geïnjecteerd PU + Rubber

UPPER RAW
MATERIAL

BLACK FULL
GRAIN LEATHER
(PT) Pele de Flor Integral Preta
(ES) Cuero Full Grain Negro
(FR) Cuir Pleine Fleur Grainé Noir
(DE) Schwarz Glattleder
(NL) Zwart Volnerfleer

LINING
MATERIAL

BLACK CAMBRELLE
TEXTILE
(PT) Têxtil Cambrelle preto
(ES) Textil Cambrelle negro
(FR) Textile Cambrelle noir
(DE) Schwarz Cambrelle Textil
(NL) Textiel Cambrelle zwart

[PATROL HIGHWAY 22]

EN ISO 20347: 2011 CE 03 HRO SRC
EU 35-48_UK 2 1/2-13_MP 217 - 315



INTERNAL ZIPPER



1076.65

PROTECTIVE
MIDSOLE

KEVLAR
(PT) Kevlar
(ES) Kevlar
(FR) Kevlar
(DE) Kevlar
(NL) Kevlar

PROTECTIVE
TOE CAP

-
(PT) -
(ES) -
(FR) -
(DE) -
(NL) -

SOLE

DIRECT INJECTED
PU + RUBBER
(PT) PU Diretamente Injetado + Borracha
(ES) PU inyectado directo + Caucho
(FR) PU Injecté Directement + Nitril
(DE) Direkt Eingespritztes PU + Gummi
(NL) Direct geïnjecteerd PU + Rubber

UPPER RAW
MATERIAL

BLACK FULL
GRAIN LEATHER
(PT) Pele de Flor Integral Preta
(ES) Cuero Full Grain Negro
(FR) Cuir Pleine Fleur Grainé Noir
(DE) Schwarz Glattleder
(NL) Zwart Volnerfleer

LINING
MATERIAL

BLACK CAMBRELLE
TEXTILE
(PT) Têxtil Cambrelle preto
(ES) Textil Cambrelle negro
(FR) Textile Cambrelle noir
(DE) Schwarz Cambrelle Textil
(NL) Textiel Cambrelle zwart

NEW
PRODUCT

2020.00

[SPACE TROOPER]

EN ISO 20347: 2011 03
EU 35-47_UK 2 1/2-12_MP 217 - 307



1675.10

PROTECTIVE
MIDSOLE

KEVLAR
(PT) Kevlar
(ES) Kevlar
(FR) Kevlar
(DE) Kevlar
(NL) Kevlar

PROTECTIVE
TOE CAP

-
(PT) -
(ES) -
(FR) -
(DE) -
(NL) -

SOLE

TPU +
EVA PHYLON
(PT) TPU + Eva Phylon
(ES) TPU + Eva Phylon
(FR) TPU + Eva Phylon
(DE) TPU + Eva Phylon
(NL) TPU + Eva Phylon

UPPER RAW
MATERIAL

HI-TECH
TEXTILE
(PT) Têxtil Hi-Tech
(ES) Textil Hi-Tech
(FR) Textile Hi-Tech
(DE) High-Tech-Textil
(NL) Hi-Tech textiel

LINING
MATERIAL

SYMPATEX WATER-
PROOF MEMBRANE
(PT) Membrana Impermeável Sympatex
(ES) Membrana Impermeable Sympatex
(FR) Membrane Impermeable Sympatex
(DE) Sympatex Wasserdichte Membrane
(NL) Sympatex Waterdicht Membran

[S.A.S. BLACK BOOT]

EN ISO 20347: 2011 CE 03 HRO SRC WR
EU 36-47_UK 3-12_MP 225-307



LACICC
SHOE LACES
STORAGE SYSTEM



1675.10

PROTECTIVE
MIDSOLE

KEVLAR
(PT) Kevlar
(ES) Kevlar
(FR) Kevlar
(DE) Kevlar
(NL) Kevlar

PROTECTIVE
TOE CAP

-
(PT) -
(ES) -
(FR) -
(DE) -
(NL) -

SOLE

DIRECT INJECTED
PU + VIBRAM
(PT) PU Diretamente Injetado + Vibram
(ES) PU inyectado directo + Vibram
(FR) PU Injecté Directement + Vibram
(DE) Direkt Eingespritztes PU + Vibram
(NL) Direct geïnjecteerd PU + Vibram

UPPER RAW
MATERIAL

PUTEK VHR
TEXTILE
(PT) Têxtil Putek VHR
(ES) Textil Putek VHR
(FR) Textile Putek VHR
(DE) Putek VHR Textil
(NL) Putek VHR Textiel

LINING
MATERIAL

SYMPATEX WATER-
PROOF MEMBRANE
(PT) Membrana Impermeável Sympatex
(ES) Membrana Impermeable Sympatex
(FR) Membrane Impermeable Sympatex
(DE) Sympatex Wasserdichte Membrane
(NL) Sympatex Waterdicht Membran

[NEW PROTECTOR]

EN ISO 20345:2022 CE S3L CI HI HRO SC SR
EU 39-47_UK 6-12_MP 247-307

1023.50



PROTECTIVE MIDSOLE

STEEL
(PT) Aço
(ES) Acero
(FR) Acier
(DE) Stahlkappe
(NL) Staal

PROTECTIVE TOE CAP

STEEL
(PT) Aço
(ES) Acero
(FR) Acier
(DE) Stahlkappe
(NL) Staal

SOLE

DIRECT INJECTED PU + RUBBER
(PT) PU Diretamente Injetado + Borracha
(ES) PU inyectado directo + Caucho
(FR) PU Injecté Directement + Nitril
(DE) Direkt Eingespritztes PU + Gummi
(NL) Direct geïnjecteerd PU + Rubber

UPPER RAW MATERIAL

BLACK LEATHER
(PT) Pele Preta
(ES) Cuero Negro
(FR) Cuir Noir
(DE) Schwarz Leder
(NL) Zwart Leer

LINING MATERIAL

BLACK CAMBRELLE TEXTILE
(PT) Têxtil Cambrelle preto
(ES) Textil Cambrelle negro
(FR) Textile Cambrelle noir
(DE) Schwarz Cambrelle Textil
(NL) Textiel Cambrelle zwart

[NEW BARCELONA]

EN ISO 20345:2022 CE S3L CI HI HRO SC SR
EU 39-47_UK 6-12_MP 247-307

1052.01



PROTECTIVE MIDSOLE

KEVLAR
(PT) Kevlar
(ES) Kevlar
(FR) Kevlar
(DE) Kevlar
(NL) Kevlar

PROTECTIVE TOE CAP

STEEL
(PT) Aço
(ES) Acero
(FR) Acier
(DE) Stahlkappe
(NL) Staal

SOLE

DIRECT INJECTED PU + RUBBER
(PT) PU Diretamente Injetado + Borracha
(ES) PU inyectado directo + Caucho
(FR) PU Injecté Directement + Nitril
(DE) Direkt Eingespritztes PU + Gummi
(NL) Direct geïnjecteerd PU + Rubber

UPPER RAW MATERIAL

BLACK LEATHER
(PT) Pele Preta
(ES) Cuero Negro
(FR) Cuir Noir
(DE) Schwarz Leder
(NL) Zwart Leer

LINING MATERIAL

VADICONFORT GREY TEXTILE
(PT) Têxtil Cinza Vadiconfort
(ES) Textil Gris Vadiconfort
(FR) Textile Vadiconfort Gris
(DE) Grau Vadiconfort textil
(NL) Textiel Vadiconfort

10

[WOMAN]



[LYNX CLAY]

EN ISO 20345:2022 CE S3L HI CI FO SR
EU 35-42_UK 2 1/2-8_MP 217 - 270



NEW
PRODUCT

1257.82



PROTECTIVE MIDSOLE

KEVLAR
(PT) Kevlar
(ES) Kevlar
(FR) Kevlar
(DE) Kevlar
(NL) Kevlar

PROTECTIVE TOE CAP

COMPOSITE
(PT) Composite
(ES) Composite
(FR) Composite
(DE) Kunststoffkappe
(NL) Composiet

SOLE

DOUBLE DENSITY PU
(PT) Dupla Densidade PU
(ES) Doble Densidade PU
(FR) Double Densité PU
(DE) Zweikomponenten PU
(NL) Tweekomponenten PU

UPPER RAW MATERIAL

BREATHABLE TEXTILE
(PT) Têxtil respirável
(ES) Textil respirable
(FR) Textile respirant
(DE) Atmungsaktiv textil
(NL) Ademend textiel

LINNING MATERIAL

BREATHABLE TEXTILE
(PT) Têxtil respirável
(ES) Textil respirable
(FR) Textile respirant
(DE) Atmungsaktiv textil
(NL) Ademend textiel

1118.10



PROTECTIVE MIDSOLE

KEVLAR
(PT) Kevlar
(ES) Kevlar
(FR) Kevlar
(DE) Kevlar
(NL) Kevlar

PROTECTIVE TOE CAP

STEEL
(PT) Aço
(ES) Acero
(FR) Acier
(DE) Stahlkappe
(NL) Staal

SOLE

DIRECT INJECTED PU
(PT) PU Diretamente Injetado
(ES) PU inyectado directo
(FR) PU Injecté Directement
(DE) Direkt Eingespritztes PU
(NL) Direct geïnjecteerd PU

UPPER RAW MATERIAL

BLACK FULL GRAIN LEATHER
(PT) Pele de Flor Integral Preta
(ES) Cuero Full Grain Negro
(FR) Cuir Pleine Fleur Grainé Noir
(DE) Schwarz Glattleder
(NL) Zwart Volnerfleer

LINNING MATERIAL

RED ANILINE LEATHER
(PT) Pele Anilina Vermetha
(ES) Cuero Anilina Rojo
(FR) Cuir Aniline Rouge
(DE) Rot Aniline Leder
(NL) Rood Aniline Leer



[BIANCA]

EN ISO 20345:2011 CE S3 SRC
EU 36-42_UK 3-8_MP 225-270

NEW
PRODUCT

1257.84



PROTECTIVE MIDSOLE

KEVLAR
(PT) Kevlar
(ES) Kevlar
(FR) Kevlar
(DE) Kevlar
(NL) Kevlar

PROTECTIVE TOE CAP

COMPOSITE
(PT) Composite
(ES) Composite
(FR) Composite
(DE) Kunststoffkappe
(NL) Composiet

SOLE

DOUBLE DENSITY PU
(PT) Dupla Densidade PU
(ES) Doble Densidade PU
(FR) Double Densité PU
(DE) Zweikomponenten PU
(NL) Tweekomponenten PU

UPPER RAW MATERIAL

BREATHABLE TEXTILE
(PT) Têxtil respirável
(ES) Textil respirable
(FR) Textile respirant
(DE) Atmungsaktiv textil
(NL) Ademend textiel

LINNING MATERIAL

BREATHABLE TEXTILE
(PT) Têxtil respirável
(ES) Textil respirable
(FR) Textile respirant
(DE) Atmungsaktiv textil
(NL) Ademend textiel

6118.40



PROTECTIVE MIDSOLE

KEVLAR
(PT) Kevlar
(ES) Kevlar
(FR) Kevlar
(DE) Kevlar
(NL) Kevlar

PROTECTIVE TOE CAP

STEEL
(PT) Aço
(ES) Acero
(FR) Acier
(DE) Stahlkappe
(NL) Staal

SOLE

DIRECT INJECTED PU
(PT) PU Diretamente Injetado
(ES) PU inyectado directo
(FR) PU Injecté Directement
(DE) Direkt Eingespritztes PU
(NL) Direct geïnjecteerd PU

UPPER RAW MATERIAL

BLACK FULL GRAIN LEATHER
(PT) Pele de Flor Integral Preta
(ES) Cuero Full Grain Negro
(FR) Cuir Pleine Fleur Grainé Noir
(DE) Schwarz Glattleder
(NL) Zwart Volnerfleer

LINNING MATERIAL

RED ANILINE LEATHER
(PT) Pele Anilina Vermetha
(ES) Cuero Anilina Rojo
(FR) Cuir Aniline Rouge
(DE) Rot Aniline Leder
(NL) Rood Aniline Leer



[CYNDI]

EN ISO 20345:2011 CE S3 SRC
EU 36-42_UK 3-8_MP 225-270



1016.10



PROTECTIVE MIDSOLE

KEVLAR
(PT) Kevlar
(ES) Kevlar
(FR) Kevlar
(DE) Kevlar
(NL) Kevlar

PROTECTIVE TOE CAP

STEEL
(PT) Aço
(ES) Acero
(FR) Acier
(DE) Stahlkappe
(NL) Staal

SOLE

DIRECT INJECTED PU
(PT) PU Diretamente Injetado
(ES) PU inyectado directo
(FR) PU Injecté Directement
(DE) Direkt Eingespritztes PU
(NL) Direct geïnjecteerd PU

UPPER RAW MATERIAL

BLACK FULL GRAIN LEATHER
(PT) Pele de Flor Integral Preta
(ES) Cuero Full Grain Negro
(FR) Cuir Pleine Fleur Grainé Noir
(DE) Schwarz Glattleder
(NL) Zwart Volnerfleer

LINNING MATERIAL

RED ANILINE LEATHER
(PT) Pele Anilina Vermetha
(ES) Cuero Anilina Rojo
(FR) Cuir Aniline Rouge
(DE) Rot Aniline Leder
(NL) Rood Aniline Leer

[BARBARA]

EN ISO 20345:2011 CE S3 SRC
EU 36-42_UK 3-8_MP 225-270



1118.10



PROTECTIVE MIDSOLE

KEVLAR
(PT) Kevlar
(ES) Kevlar
(FR) Kevlar
(DE) Kevlar
(NL) Kevlar

PROTECTIVE TOE CAP

STEEL
(PT) Aço
(ES) Acero
(FR) Acier
(DE) Stahlkappe
(NL) Staal

SOLE

DIRECT INJECTED PU
(PT) PU Diretamente Injetado
(ES) PU inyectado directo
(FR) PU Injecté Directement
(DE) Direkt Eingespritztes PU
(NL) Direct geïnjecteerd PU

UPPER RAW MATERIAL

BLACK FULL GRAIN LEATHER
(PT) Pele de Flor Integral Preta
(ES) Cuero Full Grain Negro
(FR) Cuir Pleine Fleur Grainé Noir
(DE) Schwarz Glattleder
(NL) Zwart Volnerfleer

LINNING MATERIAL

RED ANILINE LEATHER
(PT) Pele Anilina Vermetha
(ES) Cuero Anilina Rojo
(FR) Cuir Aniline Rouge
(DE) Rot Aniline Leder
(NL) Rood Aniline Leer

[LUCY]

EN ISO 20345:2011 CE S3 SRC
EU 36-42_UK 3-8_MP 225-270



1021.10



PROTECTIVE MIDSOLE

KEVLAR
(PT) Kevlar
(ES) Kevlar
(FR) Kevlar
(DE) Kevlar
(NL) Kevlar

PROTECTIVE TOE CAP

STEEL
(PT) Aço
(ES) Acero
(FR) Acier
(DE) Stahlkappe
(NL) Staal

SOLE

DIRECT INJECTED PU
(PT) PU Diretamente Injetado
(ES) PU inyectado directo
(FR) PU Injecté Directement
(DE) Direkt Eingespritztes PU
(NL) Direct geïnjecteerd PU

UPPER RAW MATERIAL

BLACK FULL GRAIN LEATHER
(PT) Pele de Flor Integral Preta
(ES) Cuero Full Grain Negro
(FR) Cuir Pleine Fleur Grainé Noir
(DE) Schwarz Glattleder
(NL) Zwart Volnerfleer

LINNING MATERIAL

RED ANILINE LEATHER
(PT) Pele Anilina Vermetha
(ES) Cuero Anilina Rojo
(FR) Cuir Aniline Rouge
(DE) Rot Aniline Leder
(NL) Rood Aniline Leer

[SANDY]

EN ISO 20345:2011 CE S2P SRC
EU 36-42_UK 3-8_MP 225-270



1036.30



PROTECTIVE MIDSOLE

KEVLAR
(PT) Kevlar
(ES) Kevlar
(FR) Kevlar
(DE) Kevlar
(NL) Kevlar

PROTECTIVE TOE CAP

STEEL
(PT) Aço
(ES) Acero
(FR) Acier
(DE) Stahlkappe
(NL) Staal

SOLE

DIRECT INJECTED PU
(PT) PU Diretamente Injetado
(ES) PU inyectado directo
(FR) PU Injecté Directement
(DE) Direkt Eingespritztes PU
(NL) Direct geïnjecteerd PU

UPPER RAW MATERIAL

BLACK FULL GRAIN LEATHER
(PT) Pele de Flor Integral Preta
(ES) Cuero Full Grain Negro
(FR) Cuir Pleine Fleur Grainé Noir
(DE) Schwarz Glattleder
(NL) Zwart Volnerfleer

LINNING MATERIAL

BLACK ANILINE LEATHER
(PT) Pele Anilina Preta
(ES) Cuero Anilina Negro
(FR) Cuir Aniline Noir
(DE) Schwarz Aniline Leder
(NL) Zwart Aniline Leer

[EVA]

EN ISO 20345:2011 CE S2P SRC
EU 36-42_UK 3-8_MP 225-270



1153.10



PROTECTIVE MIDSOLE

KEVLAR
(PT) Kevlar
(ES) Kevlar
(FR) Kevlar
(DE) Kevlar
(NL) Kevlar

PROTECTIVE TOE CAP

STEEL
(PT) Aço
(ES) Acero
(FR) Acier
(DE) Stahlkappe
(NL) Staal

SOLE

DIRECT INJECTED PU
(PT) PU Diretamente Injetado
(ES) PU inyectado directo
(FR) PU Injecté Directement
(DE) Direkt Eingespritztes PU
(NL) Direct geïnjecteerd PU

UPPER RAW MATERIAL

BLACK FULL GRAIN LEATHER
(PT) Pele de Flor Integral Preta
(ES) Cuero Full Grain Negro
(FR) Cuir Pleine Fleur Grainé Noir
(DE) Schwarz Glattleder
(NL) Zwart Volnerfleer

LINING MATERIAL

BLACK ANILINE LEATHER
(PT) Pele Anilina Preta
(ES) Cuero Anilina Negro
(FR) Cuir Aniline Noir
(DE) Schwarz Aniline Leder
(NL) Zwart Aniline Leer

[LEIA 22]

EN ISO 20345:2022 CE S3L HI CI FO SR
EU 35-42_UK 2 1/2-8_MP 217-270



1215.18



PROTECTIVE MIDSOLE

KEVLAR
(PT) Kevlar
(ES) Kevlar
(FR) Kevlar
(DE) Kevlar
(NL) Kevlar

PROTECTIVE TOE CAP

COMPOSITE
(PT) Composite
(ES) Composite
(FR) Composite
(DE) Kunststoffkappe
(NL) Composiet

SOLE

DOUBLE DENSITY PU
(PT) Dupla Densidade PU
(ES) Doble Densidade PU
(FR) Double Densité PU
(DE) Zweikomponenten PU
(NL) Tweekomponenten PU

UPPER RAW MATERIAL

PINK HIGH-TECH TEXTILE
(PT) Têxtil High-Tech Rosa
(ES) Têxtil High-Tech Rosa
(FR) Textile High-Tech Rose
(DE) Rosa High-Tech Textil
(NL) Roze High Tech Textiel

LINING MATERIAL

BLACK DRI-LEX TEXTILE
(PT) Têxtil Dri-Lex preto
(ES) Têxtil Dri-Lex negro
(FR) Textile Dri-Lex noir
(DE) Schwarz Dri-Lex textil
(NL) Textiel Dri-Lex zwart

[MICHELLE]

EN ISO 20345:2011 CE S3 HRO SRC
EU 35-42_UK 2 1/2-8_MP 217-270



1084.24



PROTECTIVE MIDSOLE

KEVLAR
(PT) Kevlar
(ES) Kevlar
(FR) Kevlar
(DE) Kevlar
(NL) Kevlar

PROTECTIVE TOE CAP

STEEL
(PT) Aço
(ES) Acero
(FR) Acier
(DE) Stahlkappe
(NL) Staal

SOLE

DIRECT INJECTED PU + RUBBER
(PT) PU Diretamente Injetado + Borracha
(ES) PU inyectado directo + Caucho
(FR) PU Injecté Directement + Nitril
(DE) Direkt Eingespritztes PU + Gummi
(NL) Direct geïnjecteerd PU + Rubber

UPPER RAW MATERIAL

PINK NUBUCK LEATHER
(PT) Pele Nubuck Rosa
(ES) Cuero Nobuck Rosa
(FR) Cuir Nubuck Rose
(DE) Rosa Nubuck Leder
(NL) Roze Nubuckleer

LINING MATERIAL

BLACK PACIFIC TEXTILE
(PT) Têxtil Pacific preto
(ES) Têxtil Pacific negro
(FR) Textile Pacific noir
(DE) Schwarz Pacific textil
(NL) Textiel Pacific zwart



ACCESSORIES

SPODOS INSOLES

SIZE 36 - 47



THE FLAT FOOT AND THE FOOT CAVITY ARE ANATOMICAL VARIATIONS OF THE INNER ARCH OF THE FOOT. THESE VARIATIONS CAUSE LOSS OF EFFICIENCY IN DAMPING AND SHOCK ABSORPTION.



FLAT FEET
9999.95



NORMAL FEET
9999.96



ARCH FEET
9999.97



FEATURES

HEALTH OF YOUR FEET:

- ANTI-MICROBIAL
- ACTIVE CARBON
- THERMOREGULATORY EFFECT
- STEAM PERMEABLE
- 100% BREATHABLE
- WASHABLE

THINKING ABOUT COMFORT:

- ANTI-FATIGUE
- EXTRA LIGHT
- HIGH ABSORPTION CAPACITY
- HIGH MEMORY CAPACITY
- DIFFERENT DENSITIES

ECOFRIENDLY:

- MADE FROM RECYCLED MATERIALS

OTHER FEATURES:

- RESISTANT TO ABRASION
- ANTI-STATIC

CHROMIUM FREE

9999.12

SIZE 36 - 47

- CORK AND NATURAL LEATHER
- BREATHABLE
- THERMOREGULATORY EFFECT



LAVORO X-MAX

9999.13

SIZE 36 - 47



PRO SOCKS

9999.79

SIZE 35 - 38 / 39 - 42 / 43 - 45



ECO SOCKS

9999.73

SIZE 38 - 42 / 43 - 47



SELECTED PREMIUM MATERIALS AND ACCURATE DESIGN TO KEEP YOUR FEET FEELING COOL, DRY AND FRESHER FOR LONGER.

SOCKS DISPLAY



SHOE POLISH

9999.90

SIZE 100MM / 130MM / 155MM / 200MM



SHOE POLISH

9999.35



AS EVEN MINOR IRRITATIONS CAN REDUCE MOBILITY OR PRODUCTIVITY AND INCREASE ABSENTEEISM, IT IS IMPORTANT, UNDER ANY FOOT HEALTH CIRCUMSTANCE, TO GET ADVICE FROM A PODIATRIST - WHICH **LAVORO** MAKES AVAILABLE THROUGH **SPODOS**, ITS **FOOT SCIENCE CENTER**. AFTER ALL, AS A CELEBRATED PROVERB SAYS,

“EVEN THE TALLEST TOWERS BEGIN ON THE GROUND”



SPODOS HELPS COMPANIES TO TAKE CARE OF THE QUALITY OF LIFE OF THE FOOT IN THE WORK CONTEXT:

1. HELPS TO DESIGN THE MOST APPROPRIATE MODELS FOR EACH WORK ENVIRONMENT;
2. ACCOMPANY THE PRODUCTION OF EACH MODEL;
3. IT CHARACTERIZES THE WORK ENVIRONMENTS AND ADVISES THE COMPANIES AFTER IDENTIFYING THE NEEDS OF EACH ONE;
4. ANALYZE FEET OF PROFESSIONAL GROUPS (USING PRESSURE PLATFORM, SPODOS PRINT, AND 3D SCANNING, SPODOS 3D);
5. DIAGNOSE PATHOLOGIES OF THE FOOT AND SUGGESTS THERAPIES;
6. RECOMMENDS THE BEST TYPOLOGY OF FOOTWEAR THAT SUITS THE CHALLENGES OF THE DIFFERENT PROFESSIONS;
7. SUPERVISES ITS EFFICIENCY IN SITU, TO ENHANCE PROTECTION RATES AS WELL AS THE FOOT'S HEALTH.
8. ENCOURAGES TRAINING AND AWARENESS ACTIVITIES.

SUSTAINABLE BY NATURE



CCS CLIMA CORK SYSTEM



CLIMA CORK SYSTEM (CCS) IS AN EXCLUSIVE SYSTEM OF LAVORO, WHICH ALLOWS THE CREATION OF A NATURAL ENVIRONMENT FOR THE FEET, BOTH IN THE FIELD OF TEMPERATURE AND THEIR ACCOMMODATION IN SHOES.

THROUGH THE INCLUSION OF AN INSULATING LAYER OF CORK BETWEEN THE SOLE AND THE INSOLE, **CLIMA CORK SYSTEM** REGULATES THE HEAT AND COLD INSIDE THE FOOTWEAR AND GIVES EXTRA COMFORT. THE CORK ALLOWS THE CREATION OF A KIND OF "FOOTPRINT", FAVORS ITS ADAPTATION TO THE SHOE, AND CONTRIBUTES TO THE REDUCTION OF FATIGUE, BY BENEFITING THE UNIFORM DISTRIBUTION OF THE WEIGHT.



LEATHER IS BACK

WITH TRACED AND 100% BIODEGRADABLE PRODUCTION, RESPONSIBLE LEATHER GUARANTEES A SUSTAINABLE FUTURE FOR THE PLANET AND EXTRA COMFORT FOR PROFESSIONALS IN A WIDE VARIETY OF ACTIVITIES.

ITS USE IN SAFETY FOOTWEAR PROVIDES USERS WITH LONG-TERM BENEFITS EVERY DAY AND OVER THE YEARS. FURTHERMORE, BECAUSE THE LEATHER MAINTAINS ITS ESSENTIAL CHARACTERISTICS OF RESISTANCE TO FIRE AND ABRASION AND WATER REPELLENCY; EASY TO MAINTAIN AND IDEAL ELASTICITY FOR ALL MOVEMENTS. HYPOALLERGENIC, IT ALSO PROMOTES PERSPIRATION.

AT LAVORO WE THEREFORE CONTINUE TO BELIEVE IN THIS SPECIAL RAW MATERIAL, APPLYING ONLY RESPONSIBLE LEATHER IN OUR DURABLE SAFETY SHOES.



PPE STANDARDS

SAFETY FOOTWEAR STANDARDS

EN ISO 20345:2011

SB (SAFETY BASIC) – 200J (JOULE) TOECAP PROTECTION.

S1 – SAME AS **SB** + CLOSED HEEL, ANTISTATIC PROTECTION AND ENERGY ABSORPTION IN THE HEEL.

S2 – SAME AS **S1** + WATERPROOF EXTERIOR TO PREVENT WATER PENETRATION.

S3 – SAME AS **S2** + MIDSOLE PENETRATION RESISTANCE TO PREVENT SHARP OBJECTS FROM PENETRATING THE FOOTWEAR AND DAMAGING YOUR FOOT.

EN ISO 20345:2022

S6 – NEW RATING INTRODUCED BY THE NEW NORM (20345:2022). SAME AS **S2** + WATER RESISTANCE FOR THE WHOLE PIECE OF FOOTWEAR.

S7 – NEW RATING INTRODUCED BY THE NEW NORM (20345:2022). SAME AS **S3** + WATER RESISTANCE FOR THE WHOLE PIECE OF FOOTWEAR.

SLIP-RESISTANCE RATINGS

EN ISO 20345:2011

SRA – TESTED ON CERAMIC TILE WETTED WITH DILUTE SOAP SOLUTION.

SRB – TESTED ON SMOOTH STEEL WITH GLYCEROL;

SRC – TESTED UNDER BOTH THE ABOVE CONDITIONS.

EN ISO 20345:2022

SR – SLIP RESISTANCE – ON CERAMIC TILE FLOOR WITH GLYCERINE.

Ø – HAS NOT BEEN TESTED ACCORDING TO THIS STANDARD AS IT OFFERS STUDS OR SPIKES, OR IS FOR USE WITHIN SPECIAL WORKPLACES AND IS THEREFORE NOT APPLICABLE.

ADDITIONAL REQUIREMENTS

A – ANTISTATIC – PROTECTS AGAINST STATIC ELECTRICAL CHARGES.

AN – ANKLE PROTECTION.

C – PARTIALLY CONDUCTIVE FOOTWEAR.

CI – COLD INSULATION

CR – CUT-RESISTANT UPPER

E – ENERGY ABSORPTION OF SEAT REGION

FO – RESISTANCE TO FUEL OIL

HI – HOT INSULATION

HRO – RESISTANCE TO HOT CONTACT AT 300°C.

PL – PENETRATION RESISTANCE (NON-METAL) – PENETRATION

LG – LADDER GRIP OUTSOLE.

M – METATARSAL PROTECTION (IMPACTS UP TO 100J)

P – PERFORATION RESISTANCE (METAL).TESTED WITH LARGE NAIL (Ø 4,5MM)

PS – PENETRATION RESISTANCE (NON-METAL) – PENETRATION TESTED WITH SMALL NAIL (Ø 3,0MM)

SC – SCUFF CAP ABRASION.

WPA – WATER PENETRATION AND ABSORPTION.

WR – WATER-RESISTANT W/ WATERPROOF MEMBRANE

SIZE CHART

Tabela de Tamanhos | Carta del Tamaño | Tableau des tailles | Größentabelle | Maattabel

MONDOPOINT R2 (MM)	EU	UK
202	33	1 1/2
210	34	2
217	35	2 1/2
225	36	3
232	37	4
240	38	5
247	39	6
255	40	6 1/2
262	41	7
270	42	8
277	43	9
285	44	10
292	45	10 1/2
300	46	11
307	47	12
315	48	13
322	49	14
330	50	14 1/2
337	51	15
345	52	16
352	53	17



LAVORO

ENGINEERING LIFE

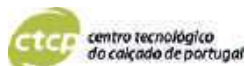


LAVORO EUROPE
SOL-PINHEIRO
4810-718
GUIMARÃES - PORTUGAL
GPS. N 41° 25' 04'' | W 08° 17' 29''
T. +351 253 776 666
F. +351 253 140 905
INFO@LAVOROEUROPE.COM

ICC - Ind. e Comercio de Calçado S
NIF: 501694200
Capital social: €1 416 495,00
Inscrita na C.R.C. Guimarães
500 017 2495



Cofinanciado pela
União Europeia



In the interest of product development LAVORO reserves the right to change or amend the specifications of the products, without previous notice.