



ARNOLD

ARNOLD IZI HYDRAULIC High Pressure vices, are compact automatic vices with long movement.

- Accuracy of 0.01 mm clamping repeatability.
- Specially designed for rapid clamp or robotised systems.
- Steel components.
- All components are tempered and ground.
- Suitable for working in horizontal and vertical machining centres.
- Adjustable clamping force directly proportional to the oil pressure input (see manual).
- Possibility of working with machined soft jaws according to the shape of the work piece.



ARNOLD

High Pressure ARNOLD 5X, are fitted with a clamp as far away as possible from the body and therefore the machine bench.

- Accuracy of 0.01 mm in clamping repeatability.
- Designed in two sizes M and L with an adjustable force of up to 3 kN in the uppermost part.
- Essential for highly specialized machining process such as titanium and aluminum, which requires totally different clamping forces.
- They maintain their constant length irrespective of the size of the work piece, being specially designed for the use in 5-axis machining centres.
- Exterior elements needed for achieving high pressure, which usually make 5X machining work difficult, are not required with this model.
- Power regulator available in M size.

IZ Vices



AUTOMATIC vices

- IZ1



Size
I 25

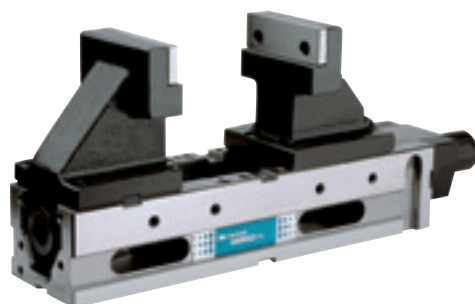
pag. 52

5X Vices



MANUAL vices

- Mechanical 5 axis



Size
I 25 M
I 25 M with regulator
I 25 L with regulator

pag. 54

ARNOLD IZ1 Hydraulic



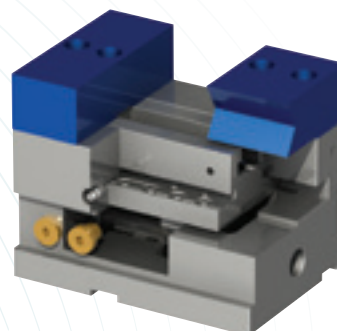
- Various clamps on one single base plate available, with a single oil input. In this way, a monoblock is obtained which can clamp a large number of small work-pieces taking up very little space.
- Fitted with a totally concealed double effect hydraulic cylinder.
- Moveable jaw guided by interior slides at the base of the vice to avoid upward movement of the work-piece and fixed jaw firmly clamped to the base body to maintain a secure reference.
- Totally concealed. No cleaning needed.
- Automatic 15 mm forward and backward movement.
- For 250 bar pressure, the resulting clamping force is 17,5 kN.
- **Common features page 50.**

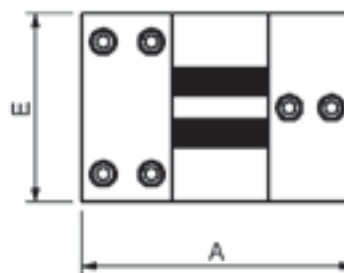
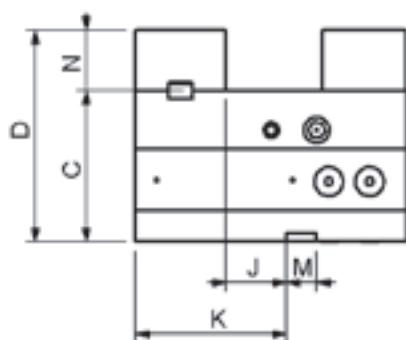
ELEMENTS REQUIRED

- Hydraulic unit or single acting with 300 bar pneumo-hydraulic pump with vice unit connection hose, pressure control switch, safety valve integrated into the unit and ON-OFF switch.
- Pressure gauge.

SET SUPPLIED

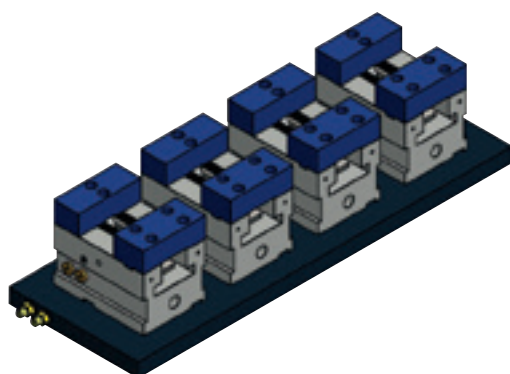
- Base body
- Hydraulic cylinder
- 1 set of jaws
- Instruction manual





Size	I25
ARNOLD IZ I	090 600 I25
Clamping force (kN)	17.5 kN / 250 bar
A	180
C -0.02	100
D	140
E	125
J +0.02	40
K	100
M H7	20
N	40
Weight (kg)	18
Clampings	I25
Clamping field	62 mm

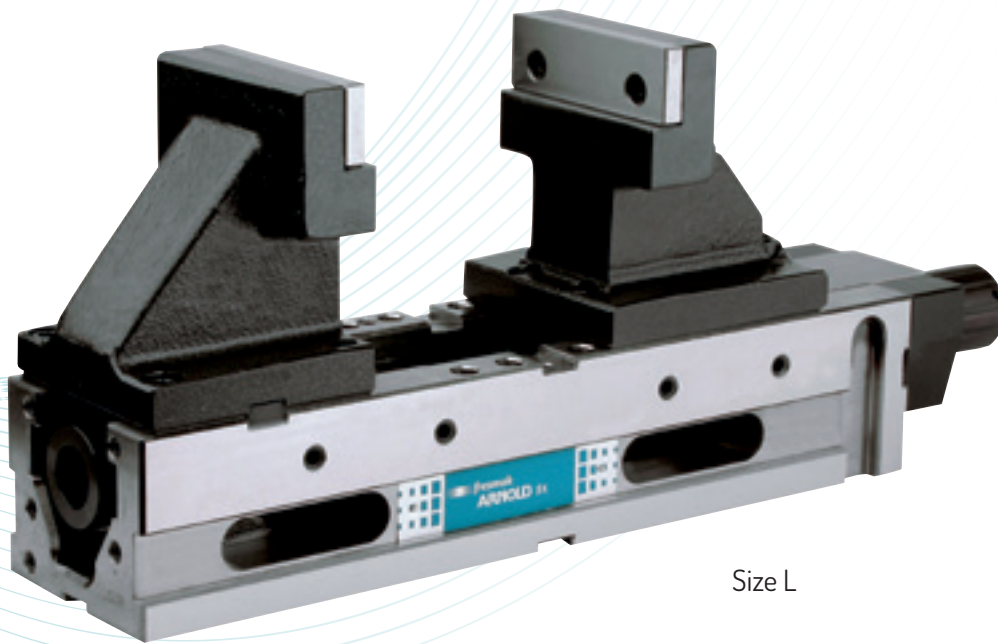
Clamping possibilities



+ info



ARNOLD 5X Mechanic



Size L

- Fitted with a high pressure mechanical intensifier.
- Side windows for quick cleaning and swarf removal.
- Customized jaws available according to the shape of the work-piece.
- **Common features page 50.**

SIZE M

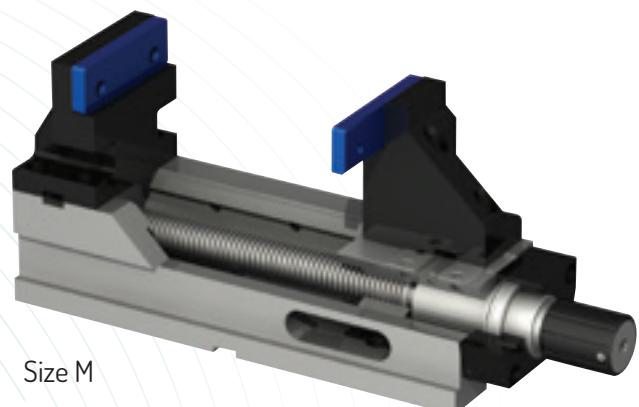
- Power regulator optional.

SIZE L

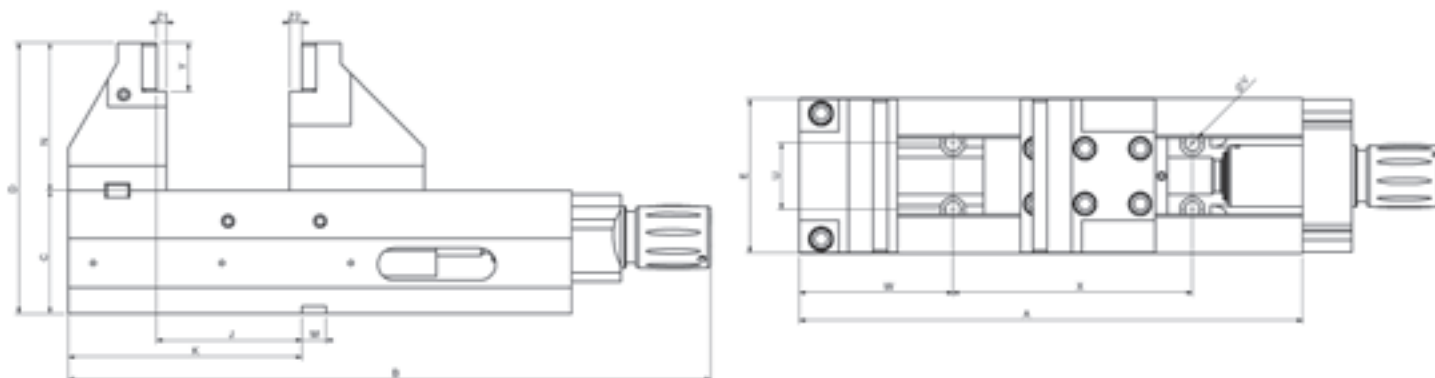
- With power regulator.
- Bigger clamping field than size M.

SET SUPPLIED

- Base body
- Mechanical spindle
- 1 set of high jaws
- 1 set of plain jaws
- 1 handle
- 4 end clamps
- Instruction manual

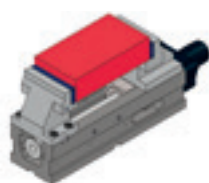


Size M

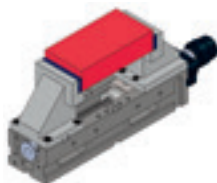


Size	125 M	125 L
ARNOLD 5X Mechanic	050 121 125	
ARNOLD 5X Mechanic with regulator	050 131 125	050 130 125
Clamping force (kN)	30	30
A	410	480
B	524	
B with regulator	551	621
C -0.02	100	100
D	220	250
E	126	126
J +0.02	118	107,5
K	190	230
M H7	20	20
N	120	150
U	54	48
V	13	13
W	125	120
X	195	240
Y	39,5	39,5
Z1	8	8
Z2	10	8
Weight (kg)	44	49
Clampings	125 M	125 L
Clamping field OI	18-228	38-240

Clamping possibilities



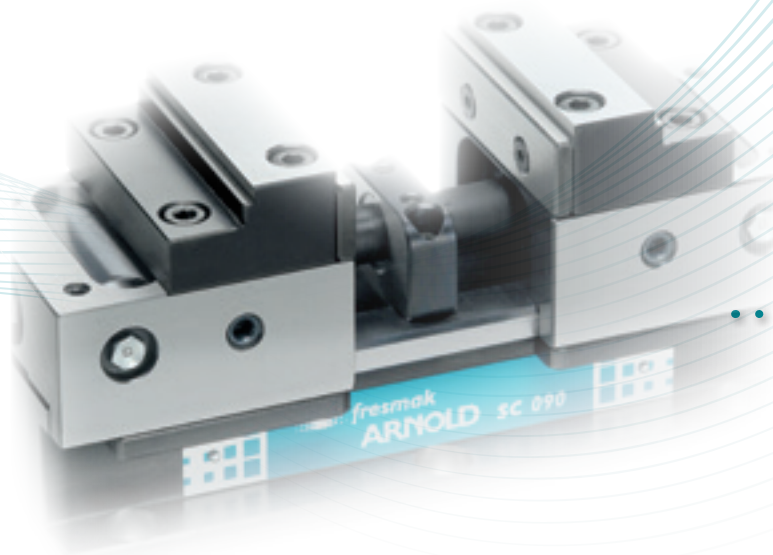
Size M



Size L

+ info





ARNOLD

ARNOLD SC vices are compact, high and self-centring and maintain constant length.

- Accuracy of 0,01 mm in clamping repeatability.
- Accuracy 0,02 mm in centring.
- Designed to work on machining centres with small tables, as well as, within 5 controlled axes machining centres.
- Compact design with exterior guides that avoid deformation as the clamping force is distributed throughout the width.
- Steel components.
- Consealed vice: Totally closed to prevent chips from getting in.
- Threaded right-left spindle which can be operated with a standard key.
- Clamping force ranging from 10 to 35 kN, depending on the model.
- Interchangeable jaws can reach a height of 125 mm, which means they can overcome the biggest obstacle for this type of work by avoiding collisions with the machine spindle or the rotation of the table.
- All standard jaws are may be used by adding soft jaws first.
- Suitable for clamping round work pieces.
- Base plate available for raising the vice available, see p. 71 .

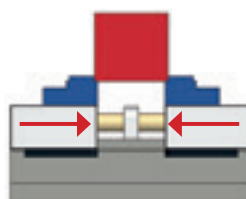


SPECIAL JAWS



Possibility of working with machined soft jaws according to the shape of the workpiece.

CLAMP CASING SYSTEM



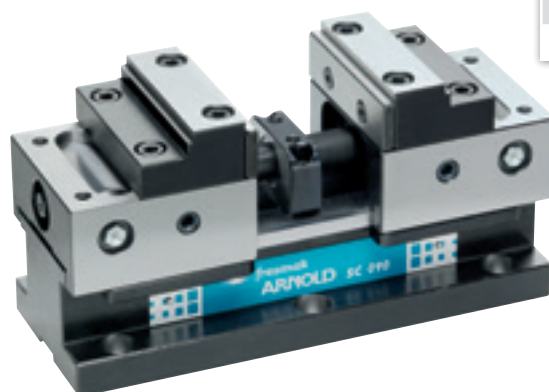
The spindle within the base jaws, just at the top of guide support, allows for applied force to be as close as possible to the piece to be machined. This means that the torque power is used to its fullest.

SC Vices



MANUAL vices

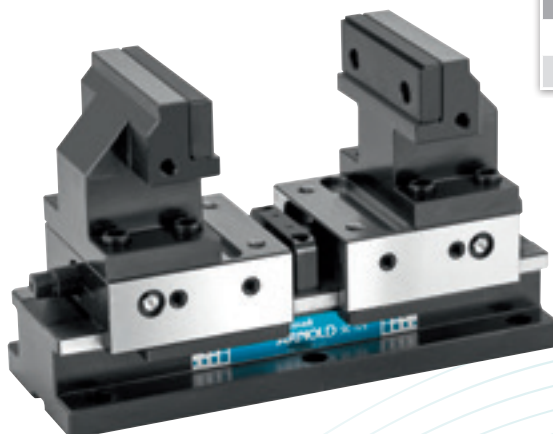
• SC



Size
070
090
125

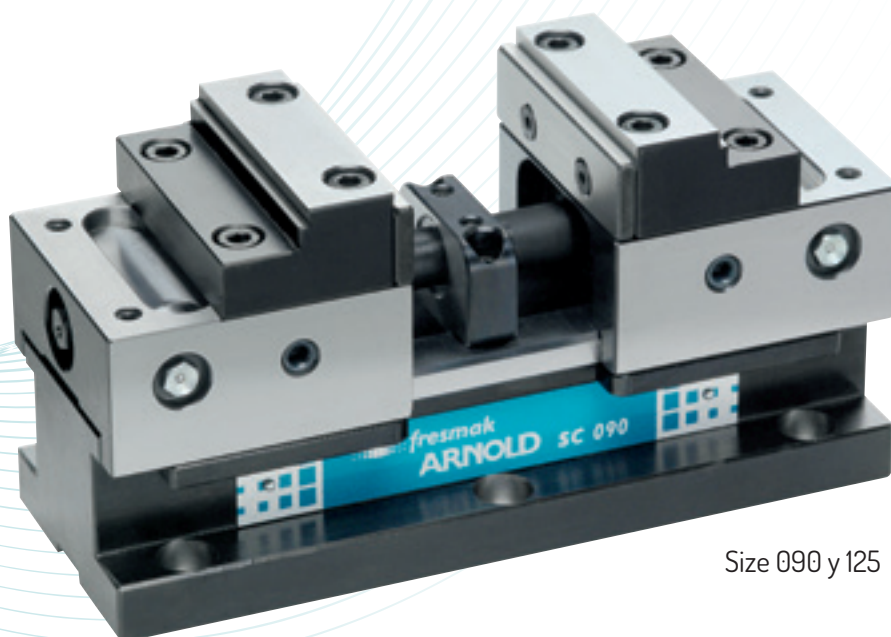
pag. 58

• SC 5X



Size
090
125

pag. 60



Size 090 y 125

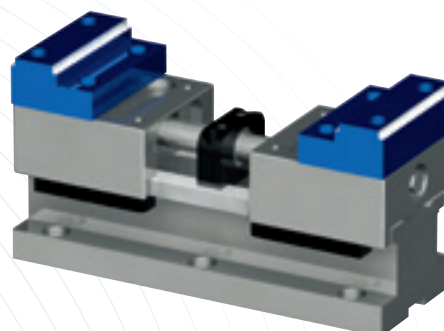
- Equipped with a mechanical spindle without high pressure.
- Jaws may be rotated: Large clamping field with 2 jaw positionings.
- Grease points allow for the vice to always be in optimal conditions for use.
- **Common features page 56.**

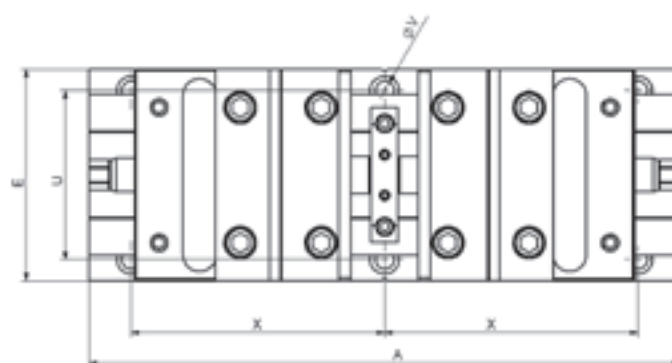
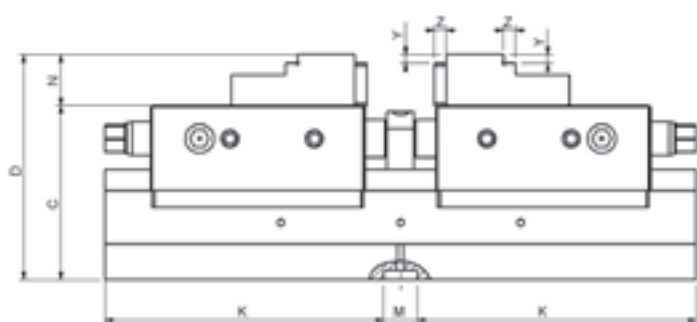


Size 070

SET SUPPLIED

- Base body
- Mechanical spindle without high pressure
- 1 set of SC hard jaws
- 1 set of SC plain jaws
- 1 socket wrench
- 4 end clamps
- Service manual



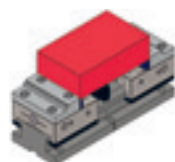


Size	70	90	125
ARNOLD SC	050 200 070	050 200 090	050 200 125
Clamping force (kN)	11 kN / 30 Nm	18 kN / 60 Nm	32 kN / 120 Nm
A	140	250	350
C	73	100	103
D	96	130	133
E	72	93	125
K	63	115	165
M H7	14	20	20
N	23	30	30
U	60	71	100
V	7	11	11
X	62	100	150
Y	3	5	5
Z	3	6	7
Weight (kg)	5	14,3	30
Clampings	70	90	125
Clamping field O1	6-36	12 - 77	14 - 108
Clamping field O2	46-76	79 - 145	108 - 204
Clamping field O3	35-65	59 - 125	82 - 178
Clamping field O4	75-105	127-193	178 - 274
Clamping field O5	43-73	64 - 129	82 - 176
Clamping field O6	83-113	131 - 197	176 - 272
Clamping field O7	72-102	111 - 177	150 - 246
Clamping field O8	112-142	179 - 245	246 - 342

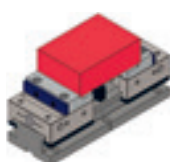
Clamping possibilities



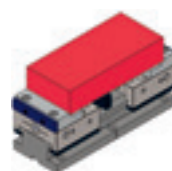
Clamping field O1



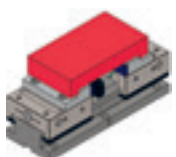
Clamping field O2



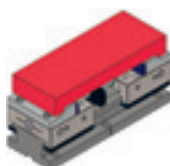
Clamping field O3



Clamping field O4



Clamping field O5



Clamping field O6



Clamping field O7

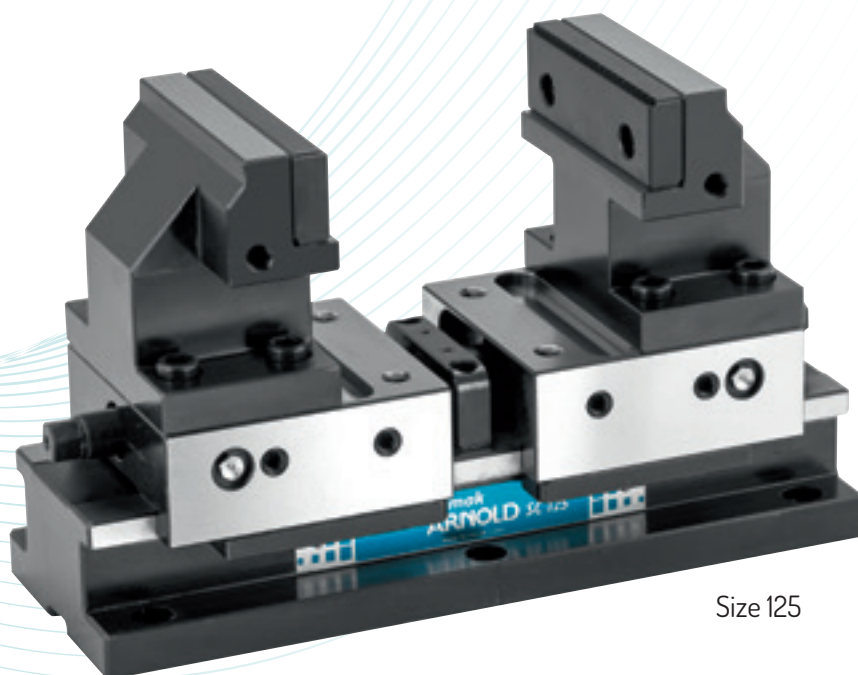


Clamping field O8

+ info



ARNOLD SC 5X



Size 125

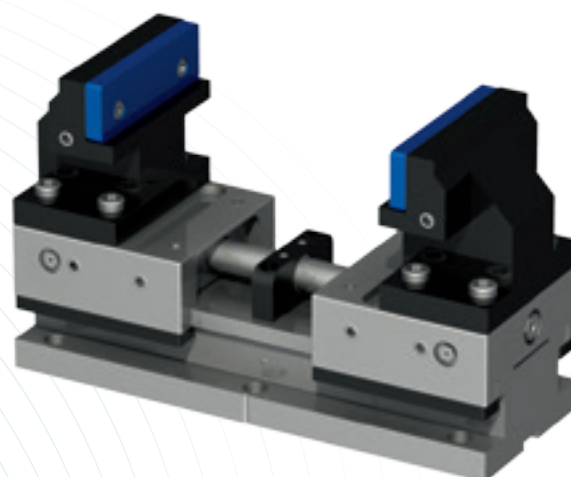
- Equipped with a mechanical spindle without high pressure.
- Supplied with high jaws specially designed for 5X machines, which avoid collisions of the spindle and allow for short tools to be used.
- Grease points allow for the vice to always be in optimal conditions for use.
- **Common features page 56.**

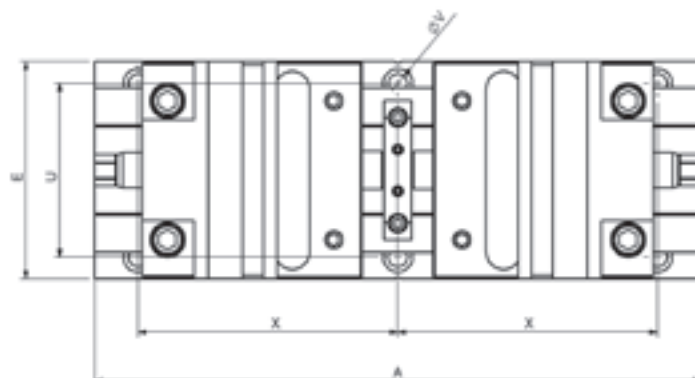
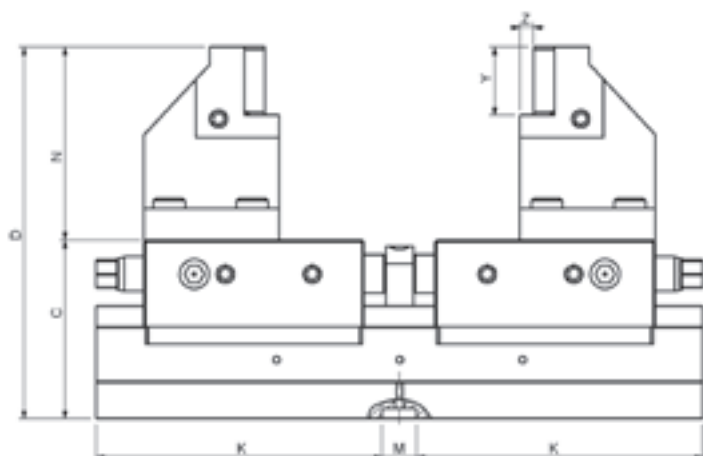


Size 090

SET SUPPLIED

- Base body
- Mechanical spindle without high pressure
- 1 set of high jaws
- 1 set of plain jaws
- 1 socket wrench
- 4 end clamps
- Service manual



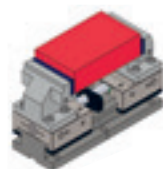


Size	90	125
ARNOLD SC 5X	050 210 090	050 210 125
Clamping force (kN)	16 kN / 60 Nm	26 kN / 120 Nm
A	250	350
C	100	103
D	155	214,5
E	90	125
K	115	165
M H7	20	20
N	55	111,5
U	71	100
V	11	11
X	100	150
Y	25	39,5
Z	5	8
Weight (kg)	17	37
Clampings	90	125
Clamping field O1	10-63	18-114
Clamping field O2	63-129	114-210
Clamping field O3	127-197	144-240
Clamping field O4	195-261	240-336

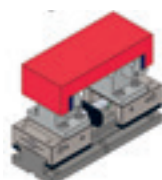
Clamping possibilities



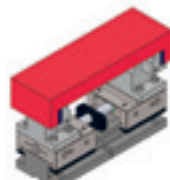
Clamping field O1



Clamping field O2



Clamping field O3



Clamping field O4

+ info

