

BEVELLING CUTTERS & BEVELLING AIR TOOLS



- 1
- 2
- 3
- 4
- 5
- 6
- 7
- 8
- 9
- 10
- 11

CONTACT

ATA
IDA Business & Technology Park,
Killygarry, Cavan, Co. Cavan,
H12 DK46,
Ireland

Tel: +353 49 435 2138
Fax: +353 49 432 6298
Email: ask@atagroup.ie

atagroup.com

8.3

ONLINE



Ideally suited for welding preparation, chamfering and radii profiling

INDUSTRIES

- Welding
- Off-shore
- Pipeline
- Shipbuilding
- Marine
- Steel-construction
- Bridge building
- Automotive
- Aerospace
- Vessel production
- Tank building

APPLICATIONS

Bevelling

- Weld preparation
- Deburring
- Countersink connections
- Bevel heads are available with angles of 30° | 37,5° | 45°

Radius

- Paint / coating adhesion
- Smooth finish
- Cable feed
- Radius cutters are available with a radius (R=mm) of R2, R3, R4, R6, R8 cutters



Features & Benefits

- Cutters can be used for beveling and chamfering edges as well as rounding the edges with a perfect precise radius
- Cutters are applicable on Steel and Stainless-Steel applications
- Consistent results for angle or rounding applications, higher level of workpiece uniformity achievable
- Accurate and effortless process to create welding edges or machined chamfers
- Reduced vibration compared to grinding or tools with inserts
- Reduction in noise levels compared to grinding or tools with inserts
- Reduction in air pollution and sparking around the working environment caused by 'fine dust particles'
- Due to the longer lifetime of the cutters, when compared to grinding discs or inserts a reduction in changing consumables is limited to a minimum
- Minimal heat transmission into the workpiece.
- Creating no discolourations and a clean surface that needs no additional treatment

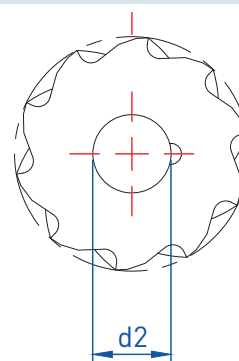
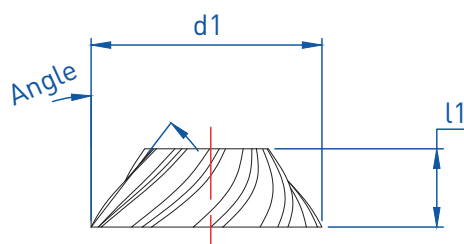
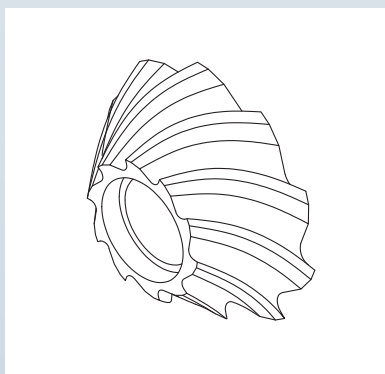
APPLICATION MATERIALS

	Steel			Stainless Steel	Non-Ferrous
	S235	>S355	Plasma / Laser Cut	S304	
ATA Bevel Cutter	•••	•••	•••	•	-

BEVEL CUTTER RANGE

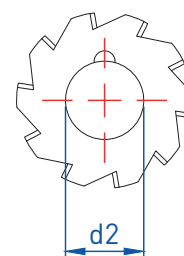
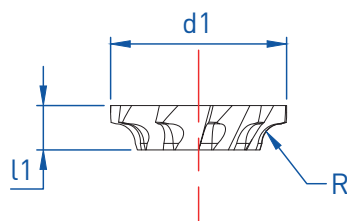
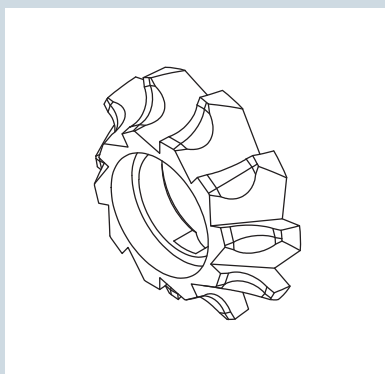
- Concentricity to improve lifetime of cutters
- Higher level of uniformity and fitting
- New: Tisinos[®] coating, to aid in cutting action

ANGLED CUTTER RANGE



Material Code	Description	Angle	d1	l1	d2
131000-010	BT30-08	30°	27.1	8.0	12.0
131000-020	BT30-12	30°	31.1	12.0	12.0
131000-030	BT37-08	37°	29.1	8.0	12.0
131000-040	BT37-12	37°	35.9	12.0	12.0
131000-050	BT45-06	45°	22.0	6.5	9.0
131000-060	BT45-08	45°	33.0	8.0	12.0
131000-070	BT45-12	45°	41.0	12.0	12.0

RADIUS CUTTER RANGE



Material Code	Description	Radius (R)	d1	l1	d2
131010-010	BTR2-06	R2	22.0	6.5	9.0
131010-020	BTR2-08	R2	27.0	7.0	12.0
131010-030	BTR3-06	R3	22.0	6.5	9.0
131010-040	BTR3-08	R3	27.0	7.0	12.0
131010-050	BTR4-06	R4	23.0	6.5	9.0
131010-060	BTR4-08	R4	28.0	7.0	12.0
131010-070	BTR6-10	R6	33.0	10.0	12.0
131010-080	BTR8-12	R8	39.0	12.0	12.0

1



2



3



4



5



6



7



8



9



10



11



BEVELLING AIR TOOLS



P25-BT



SM16-BT



RA14-BT

Bevel faster with the range of Karnasch beveling air tools. The tools have an excellent power to weight ratio, offering consistent high quality cutting patterns with minimal physical effort. The bevel depth can be adjusted to various depths easily and Karnasch Beveling Cutters can be replaced very quickly.

For lighter beveling and radius work, up to a depth of 6mm, Karnasch offer the P25-BT and SM16-BT. Specially designed for quick rounding of small sheets, pipes and holes, with depth adjustments of 0.125mm increments the tools are precise and easy to use.

Designed for heavy-duty beveling and radius work, beveling to a depth of up to 12mm or a radius up to 8mm, the RA14-BT offers a powerful 1.5HP motor ensuring that even the most physically demanding and time consuming work is completed more efficiently.

- Reduced vibration to improve lifetime of the cutters
- Quick and easy cutter replacement on all machines
- Spindle lock button
- Concentricity for a smoother cut
- Nitride hardened (QPQ), scratch resistant flanges for improved sliding capability



Model	P25-BT	SM16-BT	RA14-BT
Product Code	130100	130110	130120
Motor	Pneumatic	Pneumatic	Pneumatic
Max. Depth (mm)	±3mm at 45°	6	12
Air Pressure (bar)	6.3	6.3	6.3
Air Consumption (m³/min)	0.63	0.62	1.13
Power (W)	375	820	1100
Max Speed (rpm)	25,000	16,000	9,000
Weight (kg)	1.07	1.33	4.40
For Radius	R2 R3 R4	R2 R3 R4	R2 R3 R4 R6 R8
For Bevels	30° 37.5° 45°	30° 37.5° 45°	30° 37.5° 45°
Min Opening for Beveling mm	22	22	41
Min Opening for Rounding mm	16	16	22