

MAGNETIC HOLE CUTTING MACHINES



'ONLY THE BEST'

KA40 – KAS40 – KA50 – KAS50 – KATV55 – KATSV55
KA100 – KAS100 – KATV100 – KATSV100 – KALP45 – KATV140



- 1
- 2
- 3
- 4
- 5
- 6
- 7
- 8
- 9
- 10
- 11

8.1

CONTACT

ATA

IDA Business & Technology Park,
Killygarry, Cavan, Co. Cavan,
H12 DK46,
Ireland

Tel: +353 49 435 2138
Fax: +353 49 432 6298
Email: ask@atagroup.ie

atagroup.com

ONLINE



Index


KA 35 SILVER-MAG BEST SELLER TWIN SLIDE

20 8013 EUROPE
21 8013 USA
22 8013 UK

1286-1287


PREMIUM
Ø 12-35 mm
 Ø 5/32-1.3/8"

Ø 3-18 mm
 Ø 3/16-45/64"

Ø 10-30 mm
 Ø 3/8-1.3/16"

 Cutting depth
 max. 4"

-

-

-

KA 38 BLUE-MAG BEST SELLER SENSOR · TWIN-RAIL SLIDE

20 8020 010 EUROPE
20 8020 020 USA
20 8020 030 UK

1293


PROFESSIONAL
Ø 12-38 mm
 Ø 5/32-1.1/2"

Ø 3-18 mm
 Ø 3/16-45/64"

Ø 10-30 mm
 Ø 3/8-1.3/16"

 Cutting depth
 max. 4"

-

-


KA 40 BLUE-MAG BEST SELLER SENSOR · TWIN-RAIL SLIDE

20 8021 010 EUROPE
20 8021 020 USA
20 8021 030 UK

1294


PROFESSIONAL
Ø 12-40 mm
 Ø 5/32-1.37/64"

Ø 3-18 mm
 Ø 3/16-45/64"

Ø 10-30 mm
 Ø 3/8-1.3/16"

 Cutting depth
 max. 4"

-

-


KAS 40 BLUE-MAG BEST SELLER SENSOR · TWIN-RAIL SLIDE

20 8022 010 EUROPE
20 8022 020 USA
20 8022 030 UK

1295


PROFESSIONAL
Ø 12-40 mm
 Ø 5/32-1.37/64"

Ø 3-18 mm
 Ø 3/16-45/64"

Ø 10-30 mm
 Ø 3/8-1.3/16"

 Cutting depth
 max. 4"

-


KA 50 BLUE-MAG BEST SELLER SENSOR · TWIN-RAIL SLIDE

20 8023 010 EUROPE
20 8023 020 USA
20 8023 030 UK

1296


PROFESSIONAL
Ø 12-50 mm
 Ø 5/32-1.31/32"

Ø 3-23 mm
 Ø 3/16-29/32"

Ø 10-40 mm
 Ø 3/8-1.37/64"

 Cutting depth
 max. 4"

-

-


KAS 50 BLUE-MAG BEST SELLER SENSOR · TWIN-RAIL SLIDE

20 8024 010 EUROPE
20 8024 020 USA
20 8024 030 UK

1297


PROFESSIONAL
Ø 12-50 mm
 Ø 5/32-1.31/32"

Ø 3-23 mm
 Ø 3/16-29/32"

Ø 10-40 mm
 Ø 3/8-1.37/64"

 Cutting depth
 max. 4"

-


KATV 55 BLUE-MAG BEST SELLER SENSOR · TWIN-RAIL SLIDE

20 8025 010 EUROPE
20 8025 020 USA
20 8025 030 UK

1298


PROFESSIONAL
Ø 12-55 mm
 Ø 5/32-2.11/64"

Ø 3-23 mm
 Ø 3/16-29/32"

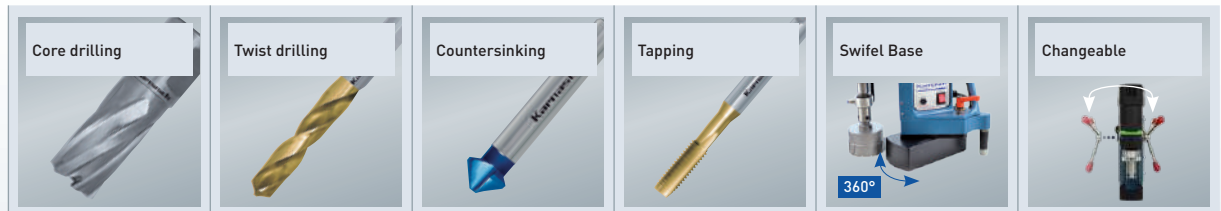
Ø 10-40 mm
 Ø 3/8-1.37/64"

Ø 6-20 mm
 Ø 15/64-25/32"

 Cutting depth
 max. 4"

-




KATSV 55 BLUE-MAG **BEST SELLER** SENSOR · TWIN-RAIL SLIDE 20 8026 010 EUROPE 20 8026 020 USA 20 8026 030 UK 1299

PROFESSIONAL


Ø 12–55 mm
Ø 5/32–2.11/64"

Cutting depth
max. 4"

Ø 3–23 mm
Ø 3/16–29/32"

Ø 10–40 mm
Ø 3/8–1.37/64"

Ø 6–20 mm
Ø 15/64–25/32"


KA 100 BLUE-MAG **BEST SELLER** SENSOR · TWIN-RAIL SLIDE 20 8027 010 EUROPE 20 8027 020 USA 20 8027 030 UK 1300

PROFESSIONAL


Ø 12–100 mm
Ø 15/32–3.15/16"

Cutting depth
max. 7.7/8"

Ø 3–32 mm
Ø 3/16–1.17/64"

Ø 10–55 mm
Ø 3/8–2.11/64"

–

–

–

KAS 100 BLUE-MAG **BEST SELLER** SENSOR · TWIN-RAIL SLIDE 20 8028 010 EUROPE 20 8028 020 USA 20 8028 030 UK 1301

PROFESSIONAL


Ø 12–100 mm
Ø 15/32–3.15/16"

Cutting depth
max. 9.27/32"

Ø 3–32 mm
Ø 3/16–1.17/64"

Ø 10–55 mm
Ø 3/8–2.11/64"

–



–

KATV 100 BLUE-MAG **BEST SELLER** SENSOR · TWIN-RAIL SLIDE 20 8029 010 EUROPE 20 8029 020 USA 20 8029 030 UK 1302

PROFESSIONAL


Ø 12–100 mm
Ø 15/32–3.15/16"

Cutting depth
max. 8.21/32"

Ø 3–32 mm
Ø 3/16–1.17/64"

Ø 10–55 mm
Ø 3/8–2.11/64"

Ø 6–32 mm
Ø 15/64–1.17/64"

–

–

KATSV 100 BLUE-MAG **BEST SELLER** SENSOR · TWIN-RAIL SLIDE 20 8030 010 EUROPE 20 8030 020 USA 20 8030 030 UK 1303

PROFESSIONAL


Ø 12–100 mm
Ø 15/32–3.15/16"

Cutting depth
max. 9.27/32"

Ø 3–32 mm
Ø 3/16–1.17/64"

Ø 10–55 mm
Ø 3/8–2.11/64"

Ø 6–32 mm
Ø 15/64–1.17/64"



–

KALP 45 BLUE-MAG **BEST SELLER** SENSOR 20 8031 010 EUROPE 20 8031 020 USA 20 8031 030 UK 1304

SPECIALIST


Ø 12–45 mm
Ø 15/32–1.49/64"

Cutting depth
max. 2.11/64"

Ø 6–16 mm
Ø 15/64–5/8"

Ø 10–30 mm
Ø 3/8–1.3/16"

–

–

–

KATV 140 BLUE-MAG **BEST SELLER** SENSOR · TWIN-RAIL SLIDE 20 8032 010 EUROPE 20 8032 020 USA 20 8032 030 UK 1305

SPECIALIST


Ø 12–140 mm
Ø 15/32–5.33/64"

Cutting depth
max. 9.27/32"

Ø 3–50 mm
Ø 3/16–1.31/32"

Ø 10–80 mm
Ø 3/8–3.5/32"

Ø 6–44 mm
Ø 15/64–1.47/64"

–

–

Up to Ø 200 mm possible

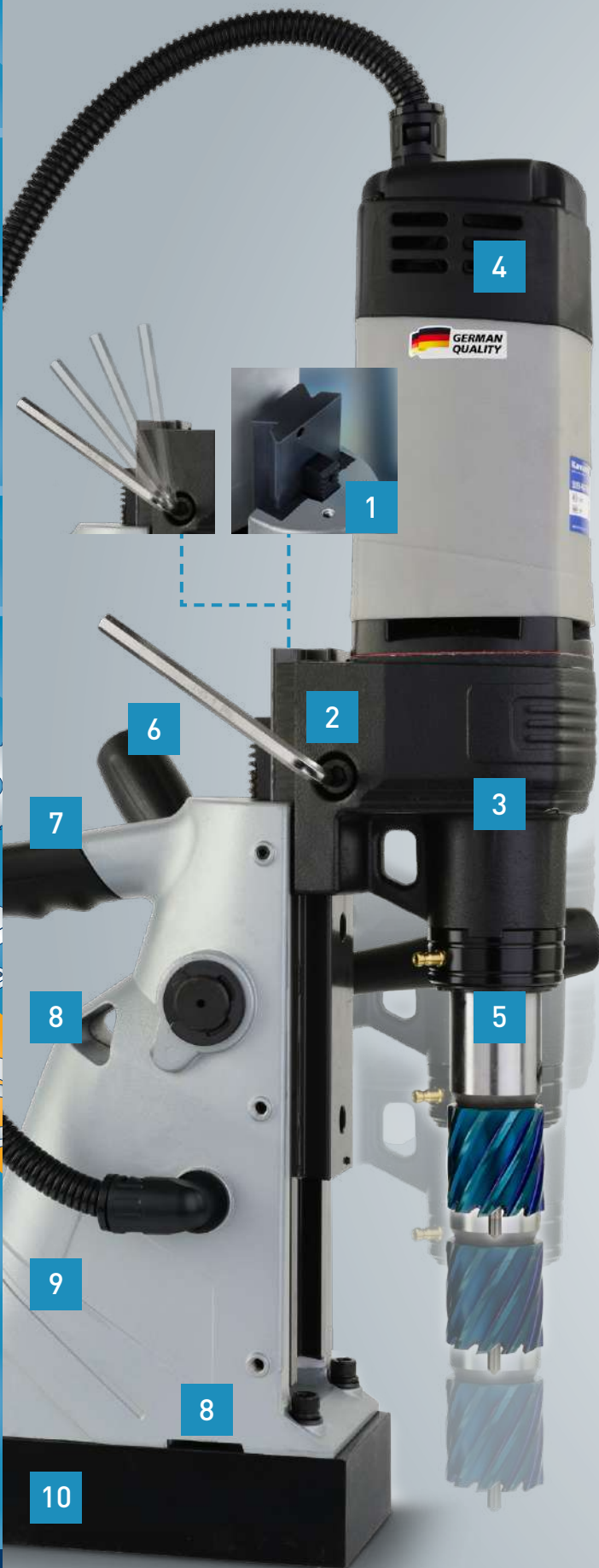
1306

PREMIUM

KA 35 SILVER-MAG · TWIN SLIDE

SPECIFICATION

- 1 BLACKDUR hardened sliding rail. This results to more than 5 times longer lifetime than conventional dovetail slides.
- 2 Two-way sliding rails, which make the motor height adjustable according to the different requirement. Stroke up to 210 mm. Rail position function, which can make the motor stop at any position to prevent selfrig decline and damage cutter.
- 3 Design of internal self-lubricating function ensures extended life of the gear.
- 4 Tilt protection design for motor air inlet avoid liquid or debris falling into the inside of the motor.
- 5 Automatic internal cooling system. The external cooling ring design prevents cooling liquid overflow into the gear box.
- 6 Ergonomically designed handles for excellent control of the rotary movement.
- 7 Open handle. Ideal for light machines. The machine can be moved easily on the surface.
- 8 Design of overall aerial lifting holes and safety rope holes guarantee double protection for the safety of the aerial personal and equipment.
- 9 The design of the entire body is designed for high rigidity to improve drilling quality.
- 10 Magnetic bottom wear design, which reduces the wear of the magnet bottom and extend service life. Magnetic base with maximum magnetic adhesion up to 10 000 N ensure the safety and reliability during drilling operations.



KA 35 SILVER-MAG · TWIN SLIDE

PREMIUM

EUROPE-VERSION

230 VOLTS

USA-VERSION

110 VOLTS

UK-VERSION

110 VOLTS

20 8013

21 8013

22 8013

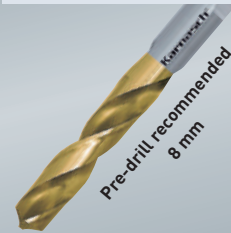
Core drilling



Ø 12-35 mm
5/32"-1.3/8"

376-501, 520-534

Twist drilling



Ø 3-18 mm
3/16"-45/64"

640

Countersinking



Ø 10-30 mm
3/8"-1.3/16"

682-717

Accessories



535-537, 542

Speed full load



Gear stages

1 = 450 rpm

The specified maximum diameter / cutting depths of the magnetic hole cutting machines, can only be guaranteed with **original** Karnasch drilling tools.

* The machines are supplied as standard with **55 mm cutting depth** holder. Please use our 2-part pins (explanation see page 384) for cutters from 18 mm if you need **cutting depth up to 110 mm**.

Special Characteristics

Thanks to Two-way sliding System stroke up to **210 mm** possible. (Description on page 1288).

Included Accessories

- safety belt
- 3 hex keys
- 2 rubber seals
- coolant bottle with hose



Motor Power Watts

1100

Tool holder

Directly Weldon 19 mm (3/4")

Coolant supply

Internal, automatically

Stroke

120 mm up to 210 mm possible
4.23/32" up to 8.17/64" possible

Voltage

230 Volts / 110 Volts

Magnetic adhesion

1000 kg | 2200 lb

Magnetic foot

80 x 168 mm Fixed

Weight

10.50 kg
23.00 lb

Movie



Bestseller - price reduced



1287

230 Volt demonstration models available.
Please send a mail to sales@atagroup.ie

1



2



3



4



5



6



7



8



9



10



11



Index

1



2



3



4



5



6



7



8



9



10



11



This starts with the most important, THE MOTOR. Eibenstock motors 100% Made in Germany are and will remain the best choice when it comes to performance and reliability, motors with high torque and low maintenance.



This goes on with the slide. Our 'HEAVY-DUTY' Twin Rail Slide System (**PATENTED**) is by far superior to standard dovetail slides in the points of stability and precision.



The heart of our magnetic hole cutting machines robust electronic switching units with ergonomically designed switch panels. Controlled by Hightech P.C.B Electronic circuitry built with safety in mind. We have interlocking systems ensuring that magnet must be energised before motor can be started. This high-tech P.C.B control system is common to all models.

MAG-TEC SENSOR: The sensor detects how well the magnet keeps the machine on the ground. It is directly connected to the engine. If the sensor is illuminating 'RED', the ground is dirty (rust, varnish residues, chips), the material is thinner than 6 mm or the feed rate is too high. The machine does not start or turns off. If the sensor is illuminating 'GREEN', the magnetic holding force is optimal and the use of the machine is safe.



All models of machines are equipped with a rear stabiliser for even more holding power and stability.



Removable coolant tank for external mounting with magnetic clip supplied. Coolant tank with quick release hose system and coolant fine adjustment. Well thought out and practical.

Consistently 'ONLY THE BEST'



Compact and robust main body housing made of high grade cast aluminium.
In case of place problems, the complete handle can be removed and mounted
on the other side within seconds.
For KA 38, KA 40, KAS 40, KA 50, KAS 50, KATV 55, KATSV 55

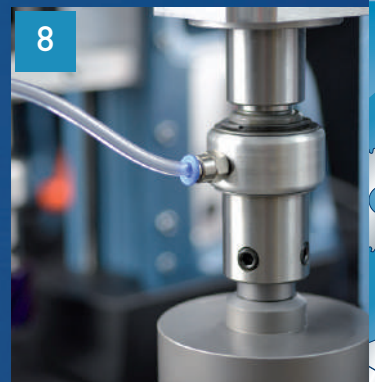
Ergonomic designed two way handle for perfect balance when
handling and positioning machine.

All machines equipped with automatic internal
coolant supply through 19 mm (3/4") Weldon or
32 mm (1 1/4") Weldon arbors.

Consistently only the best transport/storage boxes. All
machines supplied in heavy-Duty, dust and waterproof
sealed boxes with internal protective lining. Ideal protection of
machines in tough conditions.

Almost all models available with swivel base 360 degrees and larger models with ad-
ditional 16 mm or 22 mm forward/back sliding and lock, for maximum flexibility when
positioning the machine.

- A.** Place the machine
- B.** Secure with magnet
- C.** Subsequently positioned precisely and locked ready to drill



1
2
3
4
5
6
7
8
9
10
11


Index

HEAVY-DUTY

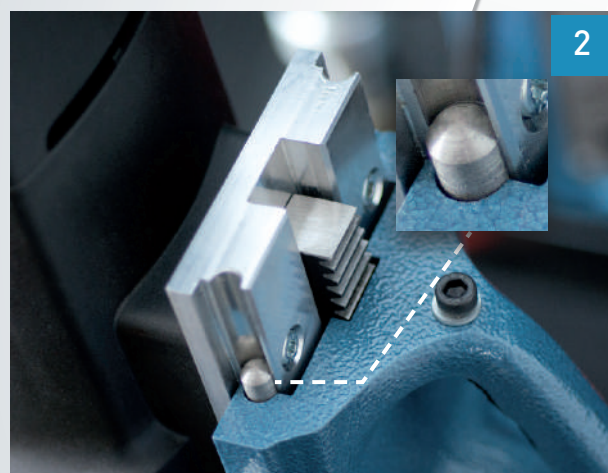
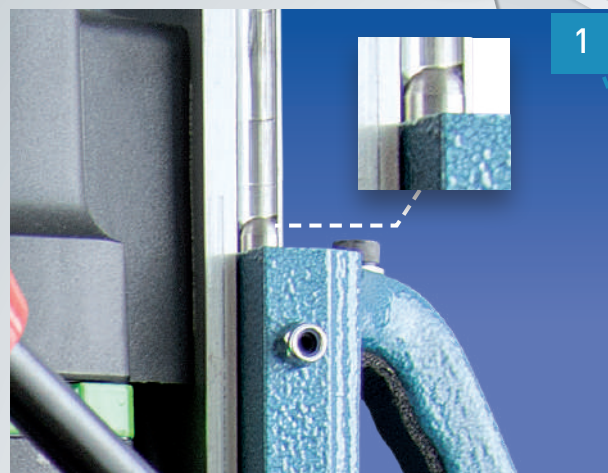
TWIN RAIL SLIDE SYSTEM

Advantages of New Twin Rail Slide System 'HEAVY-DUTY' over machines with old dovetail system.

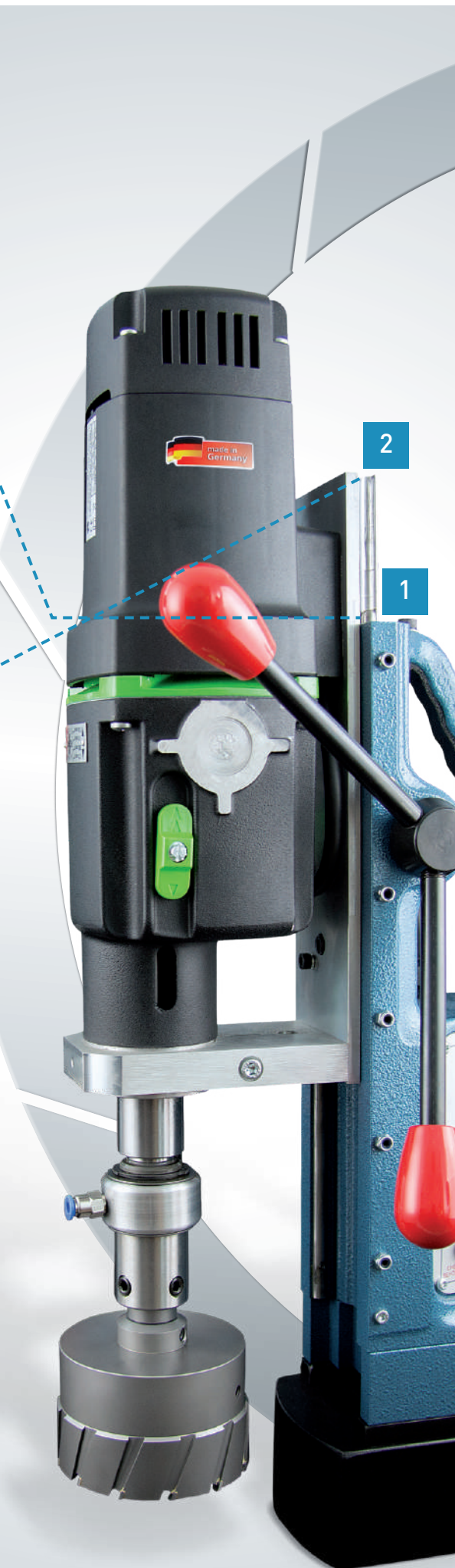
- Up to 10 times better stability.
- Extremely tight tolerances of the slide through the round Twin Rail system.
- The slide has no contact with the main body of the machine. The whole construction is connected only by the highly precise and extremely stable rail system.
 - Reduced friction / less wear
 - Low maintenance / better reliability

Result:

- Improved cutter life
- Reduced cutter breakage
- Improved hole tolerances
- Improved hole surface quality
- Up to 110 mm cutting depth possible already with small machines



Old dove tail system



The machines are delivered instantly ready to use. Complete with all necessary tools and additional parts.



Tools and additional parts: Safety chain/carabina, coolant bottle with fixing bracket and magnetic holder.



Consistently 'ONLY THE BEST' machinery requires only the best available transport boxes. All machines supplied in heavy-duty dust and water proof sealed transport containers with internal protection. Ideal for machines used in tough conditions.

1

2

3

4

5

6

7

8

9

10

i

11

Index

NOW AVAILABLE ONLINE.

- Operating instructions
- Safety instructions
- Spare parts lists motor
- Spare parts lists magnetic stand



Open here

POWER.
PRECISION.
PERFORMANCE.



Karnasch
PROFESSIONAL TOOLS

- 1
 - 2
 - 3
 - 4
 - 5
 - 6
 - 7
 - 8
 - 9
 - 10
 - 11
- Index

KA 38 BLUE-MAG · SENSOR · TWIN-RAIL SLIDE

PROFESSIONAL

EUROPE-VERSION

230 VOLTS

USA-VERSION

110 VOLTS

UK-VERSION

110 VOLTS

20 8020 010

20 8020 020

20 8020 030

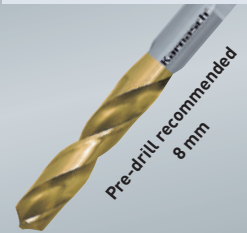
Core drilling



Ø 12-38 mm
5/32"-1.1/2"

376-501, 520-534

Twist drilling



Ø 3-18 mm
3/16"-45/64"

640

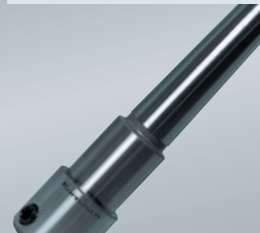
Countersinking



Ø 10-30 mm
3/8"-1.3/16"

682-717

Accessories



535-537, 542

Speed full load



Gear stages

1 = 450 rpm

The specified maximum diameter / cutting depths of the magnetic hole cutting machines, can only be guaranteed with **original** Karnasch drilling tools.

* The machines are supplied as standard with **55 mm cutting depth** holder. Please use our 2-part pins (explanation see page 384) for cutters from 18 mm if you need **cutting depth up to 110 mm**.

Special Characteristics



Sensor

Thanks to 'HEAVY-DUTY' Twin Rail Slide System easily **110 mm** cutting depth possible. (Description on page 1288).



Motor Power Watts	1100
Tool holder	Directly Weldon 19 mm (3/4")
Coolant supply	Internal, automatically
Stroke	170 mm 6.5/8"
Voltage	230 Volts / 110 Volts
Magnetic adhesion	1100 kg 2425 lb
Magnetic foot	85 x 170 mm Fixed
Weight	10.50 kg 23.00 lb

Movie



Bestseller – price reduced



1293

230 Volt demonstration models available.
Please send a mail to sales@atagroup.ie



Index

PROFESSIONAL

KA 40 BLUE-MAG · SENSOR · TWIN-RAIL SLIDE

EUROPE-VERSION

230 VOLTS

USA-VERSION

110 VOLTS

UK-VERSION

110 VOLTS

20 8021 010

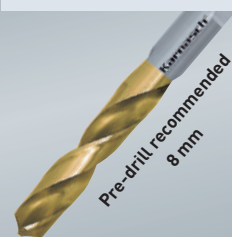
20 8021 020

20 8021 030

Core drilling

 Ø 12-40 mm
 5/32"-1.37/64"

376-501, 520-534

Twist drilling

 Ø 3-18 mm
 3/16"-45/64"

640

Countersinking

 Ø 10-30 mm
 3/8"-1.3/16"

682-717

Accessories


535-537, 542

Speed full load


Gear stages

1 = 450 rpm

 The specified maximum diameter / cutting depths of the magnetic hole cutting machines, can only be guaranteed with **original** Karnasch drilling tools.

 * The machines are supplied as standard with **55 mm cutting depth** holder. Please use our 2-part pins (explanation see page 384) for cutters from 18 mm if you need **cutting depth up to 110 mm**.

Special Characteristics


Sensor

 Thanks to 'HEAVY-DUTY' Twin Rail Slide System easily **110 mm** cutting depth possible. (Description on page 1288).


Motor Power Watts

1100

Tool holder

Directly Weldon 19 mm

Coolant supply

Internal, automatically

Stroke

170 mm | 6.5/8"

Voltage

230 Volts / 110 Volts

Magnetic adhesion

1100 kg | 2425 lb

Magnetic foot

85 × 170 mm Fixed

Weight

**11.50 kg
25.00 lb**

Movie



Bestseller – price reduced

KAS 40 BLUE-MAG · SENSOR · TWIN-RAIL SLIDE

PROFESSIONAL

EUROPE-VERSION

230 VOLTS

USA-VERSION

110 VOLTS

UK-VERSION

110 VOLTS

20 8022 010

20 8022 020

20 8022 030

Core drilling



Ø 12-40 mm
5/32"-1.37/64"

376-501, 520-534

Twist drilling



Ø 3-18 mm
3/16"-45/64"

640

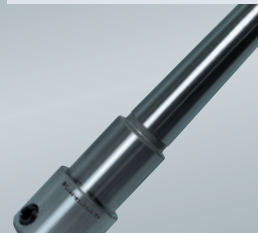
Countersinking



Ø 10-30 mm
3/8"-1.3/16"

682-717

Accessories



535-537, 542

Speed full load



Gear stages

1 = 450 rpm

The specified maximum diameter / cutting depths of the magnetic hole cutting machines, can only be guaranteed with **original** Karnasch drilling tools.

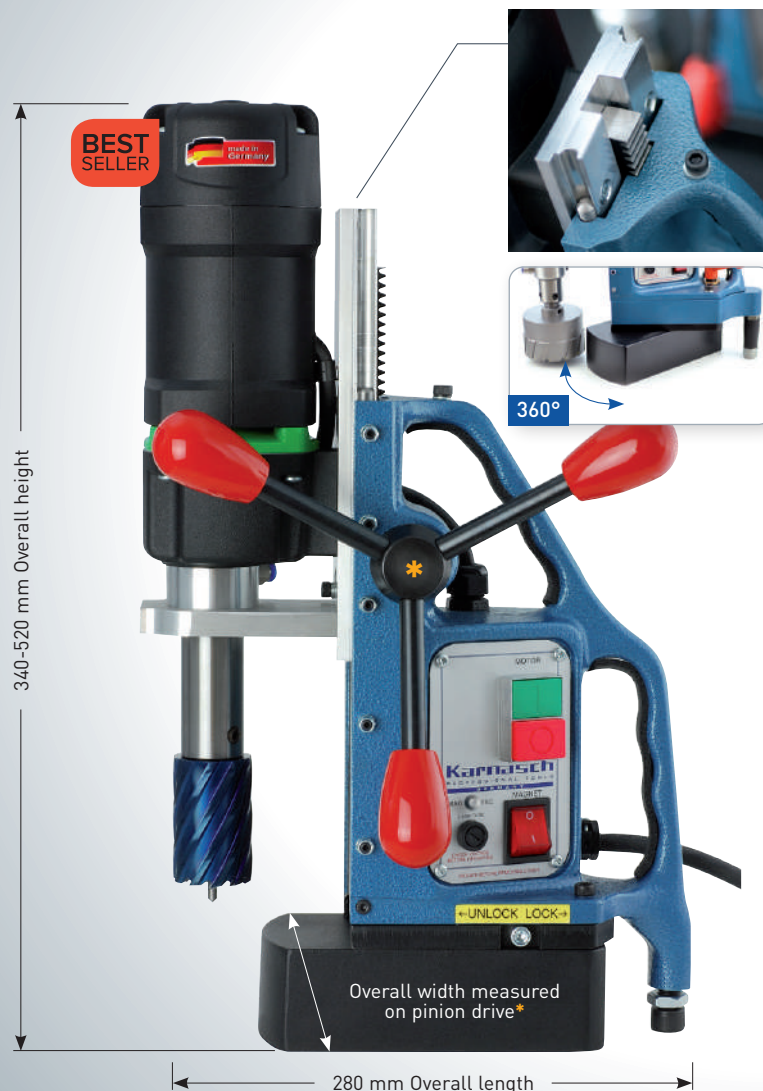
* The machines are supplied as standard with **55 mm cutting depth** holder.
Please use our 2-part pins (explanation see page 384) for cutters from 18 mm
if you need **cutting depth up to 110 mm**.

Special Characteristics



Sensor

Thanks to 'HEAVY-DUTY'
Twin Rail Slide System easily
110 mm cutting depth possible.
(Description on page 1288).



Motor Power Watts

1100

Tool holder

Directly Weldon 19 mm

Coolant supply

Internal, automatically

Stroke

180 mm | 6.31/32"

Voltage

230 Volts / 110 Volts

Magnetic adhesion

1100 kg | 2425 lb

Magnetic foot

85 x 170 mm

Swivel rotates

360°

Weight

12.00 kg
26.00 lb

Movie



Bestseller – price reduced

230 Volt demonstration models available.
Please send a mail to sales@atagroup.ie

1295



Index

PROFESSIONAL

KA 50 BLUE-MAG · SENSOR · TWIN-RAIL SLIDE

EUROPE-VERSION

230 VOLTS

USA-VERSION

110 VOLTS

UK-VERSION

110 VOLTS

20 8023 010

20 8023 020

20 8023 030

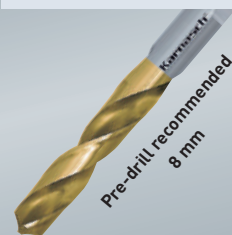
Core drilling



Ø 12-50 mm
5/32"-1.31/32"

376-501, 520-534

Twist drilling



Ø 3-23 mm
3/16"-29/32"

640

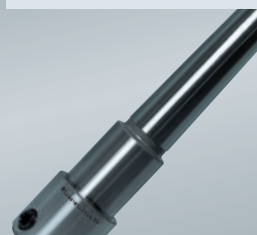
Countersinking



Ø 10-40 mm
3/8"-1.37/64"

682-717

Accessories



535-537, 542

Speed full load



Gear stages

1 = 250 rpm

2 = 450 rpm

The specified maximum diameter / cutting depths of the magnetic hole cutting machines, can only be guaranteed with **original** Karnasch drilling tools.

* The machines are supplied as standard with a **55 mm cutting depth** holder. For **cutting depth up to 110 mm** please use our extra long holders see pages 536/537, or see our 2-part pins (explanation see page 384) for cutters from 18 mm. For cutting depth more than 110 mm please ask us.

Special Characteristics



Sensor

Thanks to 'HEAVY-DUTY' Twin Rail Slide System easily **110 mm** cutting depth possible. (Description on page 1288).

BEST SELLER

made in Germany



420-560 mm Overall height

Overall width measured on pinion drive*

280 mm Overall length

Motor Power Watts

1150

Tool holder

Morse taper 2 with Weldon 19 mm

Coolant supply

Internal, automatically

Stroke

170 mm | 6.5/8"

Voltage

230 Volts / 110 Volts

Magnetic adhesion

1250 kg | 2755 lb

Magnetic foot

85 x 180 mm Fixed

Weight

13.00 kg
28.00 lb

Movie



Bestseller – price reduced

KAS 50 BLUE-MAG · SENSOR · TWIN-RAIL SLIDE

PROFESSIONAL

EUROPE-VERSION

230 VOLTS

USA-VERSION

110 VOLTS

UK-VERSION

110 VOLTS

20 8024 010

20 8024 020

20 8024 030

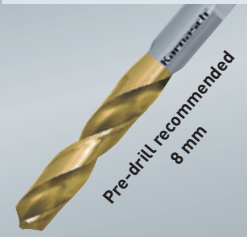
Core drilling



Ø 12-50 mm
5/32"-1.31/32"

376-501, 520-534

Twist drilling



Ø 3-23 mm
3/16"-29/32"

640

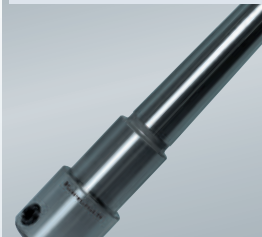
Countersinking



Ø 10-40 mm
3/8"-1.37/64"

682-717

Accessories



535-537, 542

Speed full load



Gear stages

1 = 250 rpm

2 = 450 rpm

The specified maximum diameter / cutting depths of the magnetic hole cutting machines, can only be guaranteed with **original** Karnasch drilling tools.

* The machines are supplied as standard with a **55 mm cutting depth holder**. For **cutting depth up to 110 mm** please use our extra long holders see pages 536/537, or see our 2-part pins (explanation see page 384) for cutters from 18 mm. For cutting depth more than 110 mm please ask us.

Special Characteristics



Sensor

Thanks to 'HEAVY-DUTY' Twin Rail Slide System easily **110 mm** cutting depth possible. (Description on page 1288).

Motor Power Watts

1150

Tool holder

Morse taper 2 with Weldon 19 mm

Coolant supply

Internal, automatically

Stroke

180 mm | 6.31/32"

Voltage

230 Volts / 110 Volts

Magnetic adhesion

1250 kg | 2755 lb

Magnetic foot

85 x 170 mm

Swivel rotates

360°

Weight

13.50 kg
29.80 lb

Movie



Bestseller – price reduced

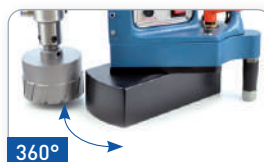


1297



BEST
SELLER

Produced in
Germany



Overall width measured
on pinion drive*

230 Volt demonstration models available.
Please send a mail to sales@atagroup.ie

PROFESSIONAL

KATV 55 BLUE-MAG · SENSOR · TWIN-RAIL SLIDE

EUROPE-VERSION

230 VOLTS

USA-VERSION

110 VOLTS

UK-VERSION

110 VOLTS

20 8025 010

20 8025 020

20 8025 030

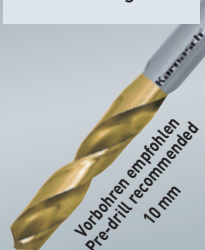
Core drilling



Ø 12-55 mm
5/32"-2.11/64"

376-501, 520-534

Twist drilling



Ø 3-23 mm
3/16"-29/32"

640

Countersinking



Ø 10-40 mm
3/8"-1.37/64"

682-717

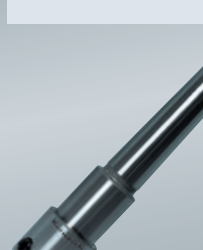
Tapping



Ø 6-20 mm
15/64"-25/32"

641

Accessories



535-537, 542

Speed full load



1 = 100-250 rpm

2 = 180-450 rpm

The specified maximum diameter / cutting depths of the magnetic hole cutting machines, can only be guaranteed with **original** Karnasch drilling tools.

* The machines are supplied as standard with a **55 mm cutting depth** holder. For **cutting depth up to 110 mm** please use our extra long holders see pages 536/537, or see our 2-part pins (explanation see page 384) for cutters from 18 mm. For cutting depth more than 110 mm please ask us.

Special Characteristics



Right/left running



Full wave electronic



Thermal/overheat protection



Sensor

Thanks to 'HEAVY-DUTY' Twin Rail Slide System easily **110 mm** cutting depth possible. (Description on page 1288).

Motor Power Watts

1250

Tool holder

Morse taper 2 with Weldon 19 mm

Coolant supply

Internal, automatically

Stroke

170 mm | 6.5/8"

Voltage

230 Volts / 110 Volts

Magnetic adhesion

1250 kg | 2755 lb

Magnetic foot

85 × 180 mm Fixed

Weight

13.00 kg
28.00 lb

Movie



Bestseller – price reduced



420-560 mm Overall height

280 mm Overall length

Overall width measured on pinion drive*

Constant torque forward and reverse with built in time delay for motor start. Gives motor and gearbox protection when switching from forward to reverse when tapping or reaming.

KATSV 55 BLUE-MAG · SENSOR · TWIN-RAIL SLIDE

PROFESSIONAL

EUROPE-VERSION

230 VOLTS

20 8026 010

USA-VERSION

110 VOLTS

20 8026 020

UK-VERSION

110 VOLTS

20 8026 030

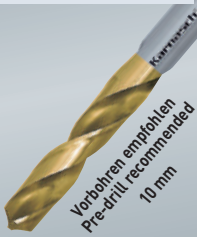
Core drilling



Ø 12-55 mm
5/32"-2.11/64"

376-501, 520-534

Twist drilling



Ø 3-23 mm
3/16"-29/32"

640

Countersinking



Ø 10-40 mm
3/8"-1.37/64"

682-717

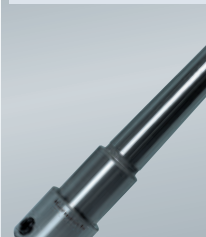
Tapping



Ø 6-20 mm
15/64"-25/32"

641

Accessories



535-537, 542

Speed full load



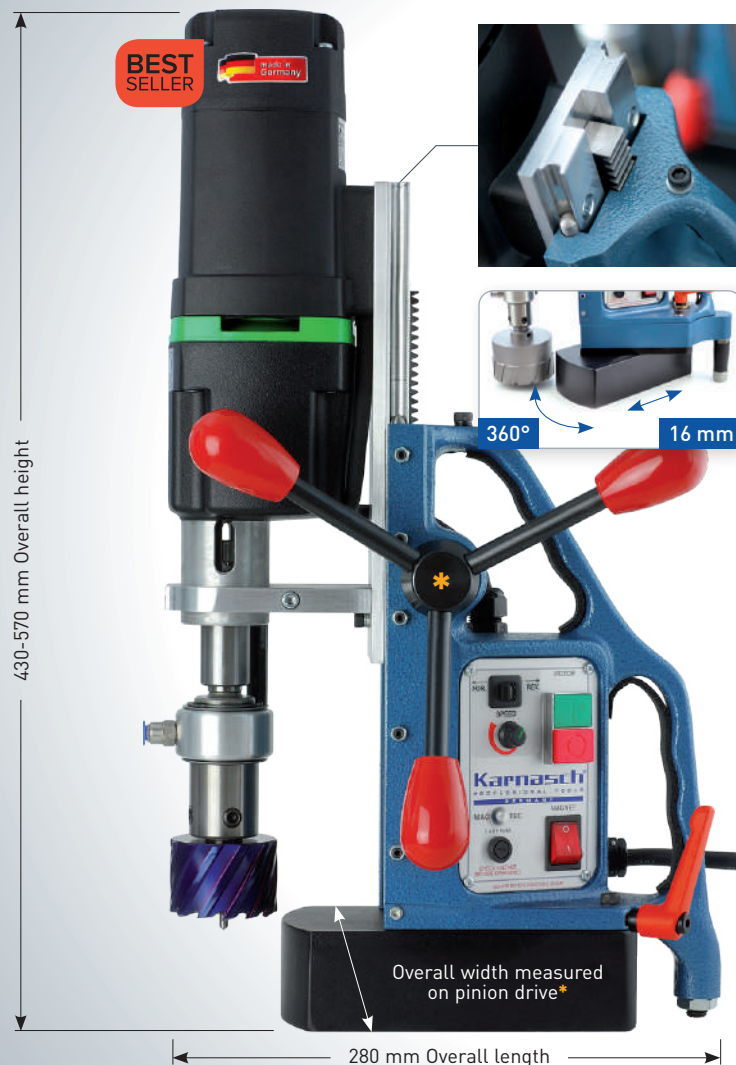
Gear stages

1 = 100-250 rpm

2 = 180-450 rpm

The specified maximum diameter / cutting depths of the magnetic hole cutting machines, can only be guaranteed with **original** Karnasch drilling tools.

* The machines are supplied as standard with a **55 mm cutting depth holder**. For **cutting depth up to 110 mm** please use our extra long holders see pages 536/537, or see our 2-part pins (explanation see page 384) for cutters from 18 mm. For cutting depth more than 110 mm please ask us.



Constant torque forward and reverse **with built in time delay** for motor start. Gives motor and gearbox protection when switching from forward to reverse when tapping or reaming.

Special Characteristics



Right/left running



Full wave electronic



Thermal/overheat protection



Sensor

Thanks to 'HEAVY-DUTY' Twin Rail Slide System easily **110 mm** cutting depth possible. (Description on page 1288).

Motor Power Watts

1250

Tool holder

Morse taper 2 with Weldon 19 mm

Coolant supply

Internal, automatically

Stroke

195 mm | 7.7/8"

Voltage

230 Volts / 110 Volts

Magnetic adhesion

1250 kg | 2755 lb

Magnetic foot

85 x 180 mm

Rotates 360°, moveable 16 mm forward & backwards

Weight

13.50 kg
29.80 lb

Movie



Bestseller – price reduced

230 Volt demonstration models available.
Please send a mail to sales@atagroup.ie

1299



Index

PROFESSIONAL

KA 100 BLUE-MAG · SENSOR · TWIN-RAIL SLIDE

EUROPE-VERSION

230 VOLTS

USA-VERSION

110 VOLTS

UK-VERSION

110 VOLTS

20 8027 010

20 8027 020

20 8027 030

Core drilling



Ø 12-100 mm
15/32"-3.15/16"

376-501, 520-534

Twist drilling



Ø 3-32 mm
3/16"-1.17/64"

640

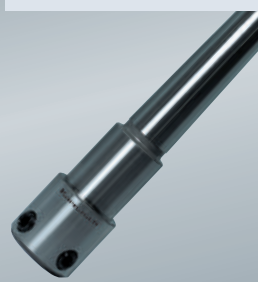
Countersinking



Ø 10-55 mm
3/8"-2.11/64"

682-717

Accessories



535-537, 542

Speed full load



Gear stages

- 1 = 110 rpm
- 2 = 175 rpm
- 3 = 245 rpm
- 4 = 385 rpm

The specified maximum diameter / cutting depths of the magnetic hole cutting machines, can only be guaranteed with **original** Karnasch drilling tools.

* The machines are supplied as standard with a **55 mm cutting depth holder**. For **cutting depth up to 110 mm** please use our extra long holders see pages 536/537, or see our 2-part pins (explanation see page 384) for cutters from 18 mm. For cutting depth more than 110 mm please ask us.

Special Characteristics



Mechanical clutch



Sensor

Thanks to 'HEAVY-DUTY' Twin Rail Slide System easily **200 mm** cutting depth possible (Description on page 1288).

Motor Power Watts

1700

Holder in Machine

Morse taper 3 with Weldon 19 mm [3/4"] for annular cutter Ø 12-60 mm
Morse taper for Ø = 61-100 mm, see accessories, pages 535-537

Coolant supply

Internal, automatically

Stroke

255 mm | 10.15/64"

Voltage

230 Volts / 110 Volts

Magnetic adhesion

2050 kg | 4520 lb

Magnetic foot

102
x
212
mm

Fixed

Weight

21.00 kg
46.00 lb

Movie



Bestseller – price reduced

1

2

3

4

5

6

7

8

9

10

11

Index

480-690 mm Overall height



Overall width measured on pinion drive*

340 mm Overall length

1300

230 Volt demonstration models available.
Please send a mail to sales@atagroup.ie

KAS 100 BLUE-MAG · SENSOR · TWIN-RAIL SLIDE

PROFESSIONAL

EUROPE-VERSION

230 VOLTS

USA-VERSION

110 VOLTS

UK-VERSION

110 VOLTS

20 8028 010

20 8028 020

20 8028 030

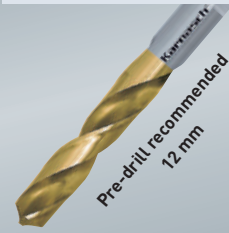
Core drilling



Ø 12-100 mm
15/32"-3.15/16"

376-501, 520-534

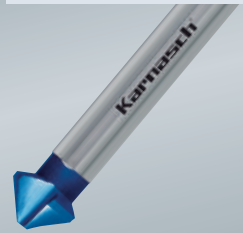
Twist drilling



Ø 3-32 mm
3/16"-1.17/64"

640

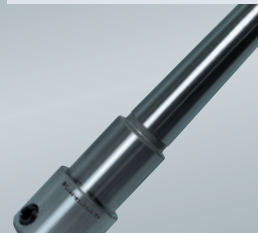
Countersinking



Ø 10-55 mm
3/8"-2.11/64"

682-717

Accessories



535-537, 542

Speed full load



Gear stages

- 1 = 110 rpm
- 2 = 175 rpm
- 3 = 245 rpm
- 4 = 385 rpm

The specified maximum diameter / cutting depths of the magnetic hole cutting machines, can only be guaranteed with **original** Karnasch drilling tools.

* The machines are supplied as standard with a **55 mm cutting depth** holder. For **cutting depth up to 110 mm** please use our extra long holders see pages 536/537, or see our 2-part pins (explanation see page 384) for cutters from 18 mm. For cutting depth more than 110 mm please ask us.



Special Characteristics



Mechanical clutch



Sensor

Thanks to 'HEAVY-DUTY' Twin Rail Slide System easily **240 mm** cutting depth possible (Description on page 1288).

Motor Power Watts **1700**

Holder in Machine Morse taper 3 with Weldon 19 mm (3/4") for annular cutter Ø 12-60 mm
Morse taper for Ø = 61-100 mm, see accessories, pages 535-537

Coolant supply **Internal, automatically**

Stroke **295 mm | 12"**

Voltage **230 Volts / 110 Volts**

Magnetic adhesion **2050 kg | 4520 lb**

Magnetic foot **102 x 212 mm** Rotates 360°, moveable 22 mm forward & backwards

Weight **22.50 kg
49.00 lb**

Movie



| Bestseller – price reduced



1301

230 Volt demonstration models available.
Please send a mail to sales@atagroup.ie

1



2



3



4



5



6



7



8



9



10



11



Index

PROFESSIONAL

KATV 100 BLUE-MAG · SENSOR · TWIN-RAIL SLIDE

EUROPE-VERSION

230 VOLTS

20 8029 010

USA-VERSION

110 VOLTS

20 8029 020

UK-VERSION

110 VOLTS

20 8029 030

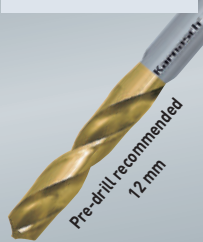
Core drilling



Ø 12-100 mm
15/32"-3.15/16"

376-501, 520-534

Twist drilling



Ø 3-32 mm
3/16"-1.17/64"

640

Countersinking



Ø 10-55 mm
3/8-2.11/64"

682-717

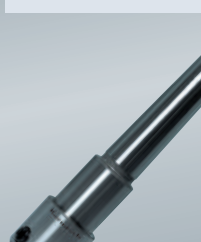
Tapping



Ø 6-32 mm
15/64"-1.17/64"

641

Accessories



535-537, 542

Speed full load



Gear stages

1 = 60-140 rpm

2 = 200-470 rpm

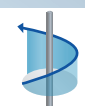
The specified maximum diameter / cutting depths of the magnetic hole cutting machines, can only be guaranteed with **original** Karnasch drilling tools.

* The machines are supplied as standard with a **55 mm cutting depth** holder. For **cutting depth up to 110 mm** please use our extra long holders see pages 536/537, or see our 2-part pins (explanation see page 384) for cutters from 18 mm. For cutting depth more than 110 mm please ask us.

Special Characteristics



Right/left running



Full wave electronic



Thermal/overheat protection



Mechanical clutch



Sensor

Thanks to 'HEAVY-DUTY' Twin Rail Slide System easily **220 mm** cutting depth possible (Description on page 1288).

Motor Power Watts

1800

Holder in Machine

Morse taper 3 with Weldon 19 mm (3/4") for annular cutter Ø 12-60 mm
Morse taper for Ø = 61-100 mm, see accessories, pages 535-537

Coolant supply

Internal, automatically

Stroke

255 mm | 10.15/64"

Voltage

230 Volts / 110 Volts

Magnetic adhesion

2050 kg | 4520 lb

Magnetic foot

85 x 180 mm

Fixed

Weight

20.50 kg
45.00 lb

Movie



Bestseller – price reduced



Constant torque forward and reverse with built in time delay for motor start. Gives motor and gearbox protection when switching from forward to reverse when tapping or reaming.

KATSV 100 BLUE-MAG · SENSOR · TWIN-RAIL SLIDE

PROFESSIONAL

EUROPE-VERSION

230 VOLTS

20 8030 010

USA-VERSION

110 VOLTS

20 8030 020

UK-VERSION

110 VOLTS

20 8030 030

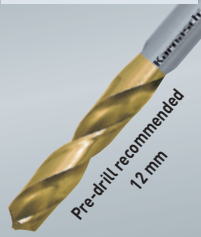
Core drilling



Ø 12-100 mm
15/32"-3.15/16"

376-501, 520-534

Twist drilling



Ø 3-32 mm
3/16"-1.17/64"

640

Countersinking



Ø 10-55 mm
3/8"-2.11/64"

682-717

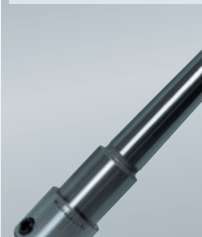
Tapping



Ø 6-32 mm
15/64"-1.17/64"

641

Accessories



535-537, 542

Speed full load



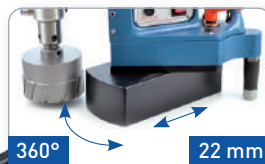
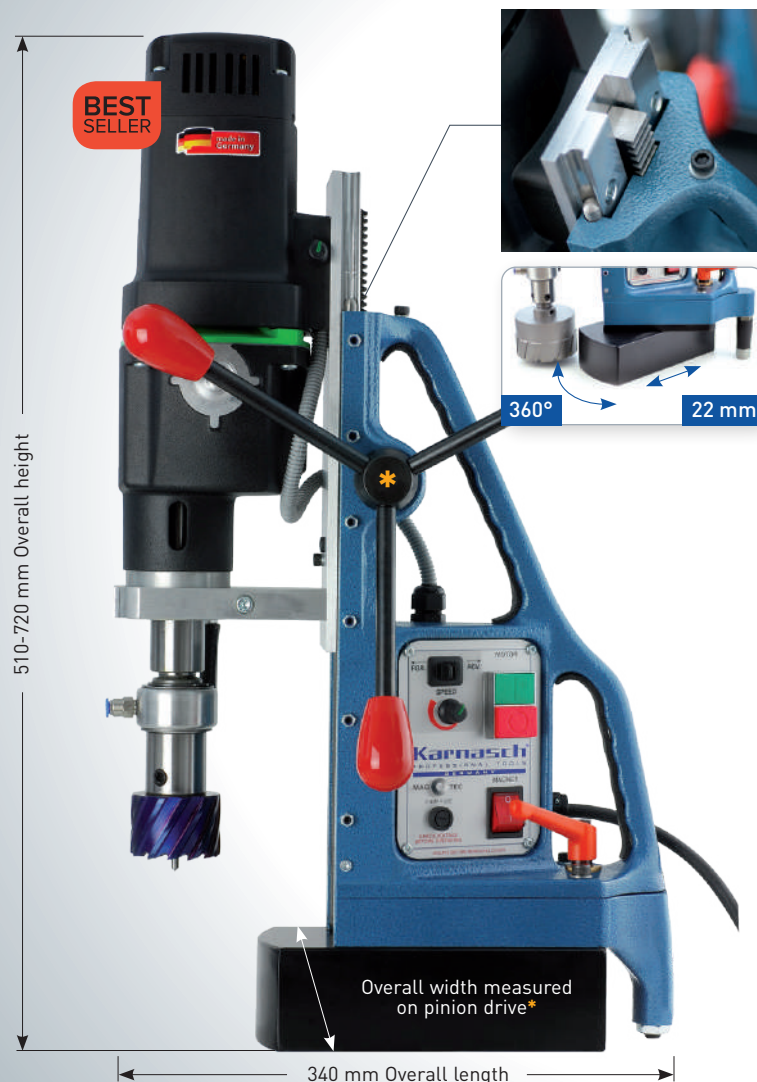
Gear stages

1 = 60-140 rpm

2 = 200-470 rpm

The specified maximum diameter / cutting depths of the magnetic hole cutting machines, can only be guaranteed with **original** Karnasch drilling tools.

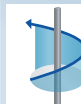
* The machines are supplied as standard with a **55 mm cutting depth holder**. For **cutting depth up to 110 mm** please use our extra long holders see pages 536/537, or see our 2-part pins (explanation see page 384) for cutters from 18 mm. For cutting depth more than 110 mm please ask us.



Special Characteristics



Right/left running



Full wave electronic



Thermal/overheat protection



Mechanical clutch



Sensor

Thanks to 'HEAVY-DUTY' Twin Rail Slide System easily **240 mm** cutting depth possible (Description on page 1288).

Motor Power Watts 1800

Holder in Machine Morse taper 3 with Weldon 19 mm (3/4") for annular cutter Ø 12-60 mm
Morse taper for Ø = 61-100 mm, see accessories, pages 535-537

Coolant supply Internal, automatically

Stroke 295 mm | 12"

Voltage 230 Volts / 110 Volts

Magnetic adhesion 2050 kg | 4520 lb

Magnetic foot 85 x 180 mm Rotates 360°, moveable 22 mm forward & backwards

Weight 25.50 kg
56.00 lb

Movie



Constant torque forward and reverse **with built in time delay** for motor start. Gives motor and gearbox protection when switching from forward to reverse when tapping or reaming.

230 Volt demonstration models available.
Please send a mail to sales@atagroup.ie

Bestseller – price reduced



1303

1



2



3



4



5



6



7



8



9



10



11



Index

SPECIALIST

KALP 45 BLUE-MAG · SENSOR

EUROPE-VERSION

230 VOLTS

USA-VERSION

110 VOLTS

UK-VERSION

110 VOLTS

20 8031 010

20 8031 020

20 8031 030

Core drilling



Ø 12-45 mm
15/32" - 1.49/64"

376-501, 520-534

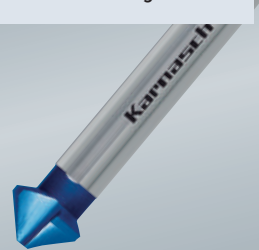
Twist drilling



Ø 6-16 mm
15/64" - 5/8"

534

Countersinking



Ø 10-30 mm
3/8" - 1.3/16"

682-717

Accessories



535-537, 542

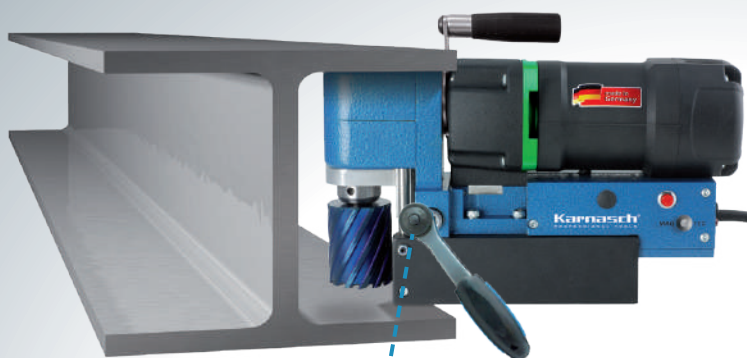
Speed full load



Gear stages

1 = 450 rpm

The specified maximum diameter / cutting depths of the magnetic hole cutting machines, can only be guaranteed with **original** Karnasch drilling tools.

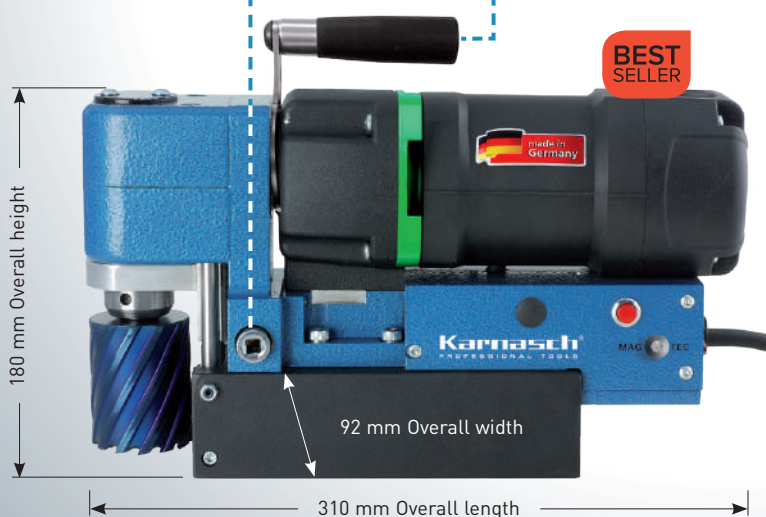


Feed via ratchet lever. Changeable
for right and left hand operation.



Machine rotates 360° possible.
Price on request

Handle removeable /
moveable



Special Characteristics



Sensor

Up to **55 mm** cutting depth
can be achieved with machine
height of only **180 mm**.
Probably the lowest machine
with the largest cutting depth
on the market.

Included Accessories

- safety belt
- ratched
- hex keys
- aerosols

Motor Power Watts

1100

Tool holder

Directly Weldon 19 mm

Coolant supply

Manual

Stroke

63 mm | 2.1/2"

Voltage

230 Volts / 110 Volts

Magnetic adhesion

1200 kg | 2645 lb

Magnetic foot

86
x
196
mm

Fixed

Weight

11.00 kg
24.00 lb

Movie



Bestseller – price reduced

KATV 140 BLUE-MAG · SENSOR · TWIN-RAIL SLIDE

SPECIALIST

EUROPE-VERSION

230 VOLTS

20 8032 010

USA-VERSION

110 VOLTS

20 8032 020

UK-VERSION

110 VOLTS

20 8032 030

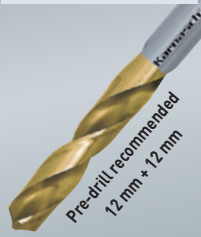
Core drilling



Ø 12-140 mm
15/32"-5.33/64"

376-501, 520-534

Twist drilling



Ø 3-50 mm
3/16"-1.31/32"

640

Countersinking



Ø 10-80 mm
3/8"-3.5/32"

682-717

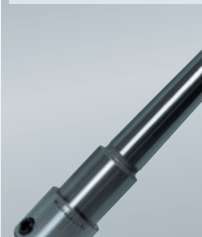
Tapping



Ø 6-44 mm
15/64"-1.47/64"

641

Accessories



535-537, 542

Speed full load



Gear stages

- 1 = 30-80 rpm
- 2 = 50-120 rpm
- 3 = 130-350 rpm
- 4 = 210-550 rpm

The specified maximum diameter / cutting depths of the magnetic hole cutting machines, can only be guaranteed with **original** Karnasch drilling tools.

* The machines are supplied as standard with a **55 mm cutting depth holder**. For **cutting depth up to 110 mm** please use our extra long holders see pages 536/537, or see our 2-part pins (explanation see page 384) for cutters from 18 mm. For cutting depth more than 110 mm please ask us.



Special Characteristics



Right/left running



Full wave electronic



Thermal/overheat protection



Mechanical clutch



Sensor

Thanks to 'HEAVY-DUTY' Twin Rail Slide System easily **240 mm** cutting depth possible (Description on page 1288).

Motor Power Watts

2300

Accessories in machine

Adapter weldon 32 mm to 19 mm
For annular cutter Ø 12-60 mm
Morse taper 4 with weldon 32 mm (1.1/4")
For annular cutter Ø 61-140 mm

Coolant supply

Internal, automatically

Stroke

320 mm | 12"

Voltage

230 Volts / 110 Volts

Magnetic adhesion

2675 kg | 5897 lb

Magnetic foot

120
x
240
mm

Fixed

Weight

35.00 kg
73.00 lb

Movie



Bestseller – price reduced

230 Volt demonstration models available.
Please send a mail to sales@atagroup.ie

1305



Index

SPECIALIST

KATV 200 BLUE-MAG · SENSOR · TWIN-RAIL SLIDE

EUROPE-VERSION

230 VOLTS

20 8033 010



USA-VERSION

110 VOLTS

20 8033 020



UK-VERSION

110 VOLTS

20 8033 030

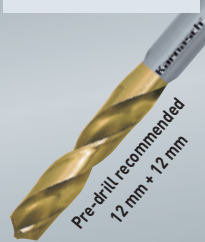


Core drilling

Ø 12-200 mm
15/32" - 7.7/8"

376-501, 520-534

Twist drilling

Ø 3-50 mm
3/16" - 1.31/32"

640

Countersinking

Ø 10-80 mm
3/8" - 3.5/32"

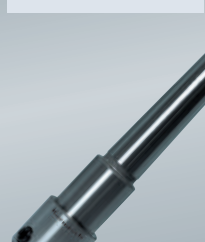
682-717

Tapping

Ø 6-44 mm
15/64" - 1.47/64"

641

Accessories



535-537, 542

Speed full load



Gear stages

1 = 30-80 rpm

2 = 50-120 rpm

3 = 130-350 rpm

4 = 210-550 rpm

The specified maximum diameter / cutting depths of the magnetic hole cutting machines, can only be guaranteed with **original** Karnasch drilling tools.

* The machines are supplied as standard with a **55 mm cutting depth** holder. For **cutting depth up to 110 mm** please use our extra long holders see pages 536/537, or see our 2-part pins (explanation see page 384) for cutters from 18 mm. For cutting depth more than 110 mm please ask us.

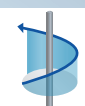
You are looking on a machine up to Ø 200 mm?

We have a suitable model. Please contact us for more details.

Special Characteristics



Right/left running



Full wave electronic



Thermal/overheat protection



Mechanical clutch



Sensor

Motor Power Watts

2300

Accessories in machine

Adapter weldon 32 mm to 19 mm
For annular cutter Ø 12-60 mm
Morse taper 4 with weldon 32 mm (1.1/4")
For annular cutter Ø 61-200 mm

Coolant supply

Internal, automatically

Stroke

320 mm | 12"

Voltage

230 Volts / 110 Volts

Magnetic adhesion

4100 kg | 9039 lb

Magnetic foot

205
x
210 mm

Fixed

Weight

45.00 kg
99.20 lb

Movie

